



SWT96AN 5000/5A 3MW

SWT96AN 5000/5A 3MW, Escala intermutável para wattímetro trifásico WTC96AN

Código: M130LW.

- > Sistema: Trifásicos
- > Intervalo de Medida (A): 5000/5
- > Escala completa: 3 MW
- > Equipamento: WT96AN
- > Módulos: 96x96

Especificações

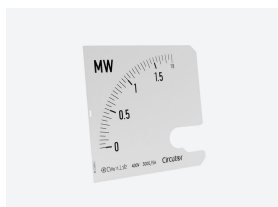
Características mecânicas

| | |
|-----------------------------------|------------------|
| Tamanho (mm) larg. x alt. x prof. | 84 x 84 x 1 (mm) |
| Peso (kg) | 0,008 |

SWM/SWT

Escala intermutável para wattímetro WMC/WTC

| CÓDIGO | MODELO | Intervalo de Medida (A) | Módulos | Equipamento | Escala completa |
|---------|----------------------|-------------------------|---------|-------------|-----------------|
| M130J9. | SWM96 50/5A 20kW | 50/5 | 96x96 | WM96 | 20 kW |
| M130JC. | SWM96 100/5A 40kW | 100/5 | 96x96 | WM96 | 40 kW |
| M130JE. | SWM96 150/5A 60kW | 150/5 | 96x96 | WM96 | 60 kW |
| M130JF. | SWM96 200/5A 80kW | 200/5 | 96x96 | WM96 | 80 kW |
| M130JH. | SWM96 300/5A 120kW | 300/5 | 96x96 | WM96 | 120 kW |
| M130JJ. | SWM96 400/5A 160kW | 400/5 | 96x96 | WM96 | 160 kW |
| M130JK. | SWM96 500/5A 200kW | 500/5 | 96x96 | WM96 | 200 kW |
| M130JL. | SWM96 600/5A 240kW | 600/5 | 96x96 | WM96 | 240 kW |
| M130JP. | SWM96 1000/5A 400kW | 1000/5 | 96x96 | WM96 | 400 kW |
| M130JR. | SWM96 1500/5A 600kW | 1500/5 | 96x96 | WM96 | 600 kW |
| M130JS. | SWM96 2000/5A 800kW | 2000/5 | 96x96 | WM96 | 800 kW |
| M130JU. | SWM96 3000/5A 1,2MW | 3000/5 | 96x96 | WM96 | 1,2 MW |
| M130JV. | SWM96 4000/5A 1,6MW | 4000/5 | 96x96 | WM96 | 1,6 MW |
| M130JW. | SWM96 5000/5A 2MW | 5000/5 | 96x96 | WM96 | 2 MW |
| M130K9. | SWT96E 50/5A 30kW | 50/5 | 96x96 | WT96E | 30 kW |
| M130KB. | SWT96E 75/5A 50kW | 75/5 | 96x96 | WT96E | 50 kW |
| M130KC. | SWT96E 100/5A 60kW | 100/5 | 96x96 | WT96E | 60 kW |
| M130KE. | SWT96E 150/5A 90kW | 150/5 | 96x96 | WT96E | 90 kW |
| M130KF. | SWT96E 200/5A 120kW | 200/5 | 96x96 | WT96E | 120 kW |
| M130KH. | SWT96E 300/5A 180kW | 300/5 | 96x96 | WT96E | 180 kW |
| M130KJ. | SWT96E 400/5A 240kW | 400/5 | 96x96 | WT96E | 240 kW |
| M130KK. | SWT96E 500/5A 300kW | 500/5 | 96x96 | WT96E | 300 kW |
| M130KL. | SWT96E 600/5A 360kW | 600/5 | 96x96 | WT96E | 360 kW |
| M130KP. | SWT96E 1000/5A 600kW | 1000/5 | 96x96 | WT96E | 600 kW |



SWT96AN 5000/5A 3MW

Código: M130LW.

| CÓDIGO | MODELO | Intervalo de Medida (A) | Módulos | Equipamento | Escala completa |
|---------|-----------------------|-------------------------|---------|-------------|-----------------|
| M130KR. | SWT96E 1500/5A 900kW | 1500/5 | 96x96 | WT96E | 900 kW |
| M130KS. | SWT96E 2000/5A 1,2MW | 2000/5 | 96x96 | WT96E | 1,2 MW |
| M130KU. | SWT96E 3000/5A 1,8MW | 3000/5 | 96x96 | WT96E | 1,8 MW |
| M130KV. | SWT96E 4000/5A 2,4MW | 4000/5 | 96x96 | WT96E | 2,4 MW |
| M130KW. | SWT96E 5000/5A 3MW | 5000/5 | 96x96 | WT96E | 3 MW |
| M130L9. | SWT96AN 50/5A 30kW | 50/5 | 96x96 | WT96AN | 30 kW |
| M130LB. | SWT96AN 75/5A 50kW | 75/5 | 96x96 | WT96AN | 50 kW |
| M130LC. | SWT96AN 100/5A 60kW | 100/5 | 96x96 | WT96AN | 60 kW |
| M130LE. | SWT96AN 150/5A 90kW | 150/5 | 96x96 | WT96AN | 90 kW |
| M130LF. | SWT96AN 200/5A 120kW | 200/5 | 96x96 | WT96AN | 120 kW |
| M130LH. | SWT96AN 300/5A 180kW | 300/5 | 96x96 | WT96AN | 180 kW |
| M130LJ. | SWT96AN 400/5A 240kW | 400/5 | 96x96 | WT96AN | 240 kW |
| M130LK. | SWT96AN 500/5A 300kW | 500/5 | 96x96 | WT96AN | 300 kW |
| M130LL. | SWT96AN 600/5A 360kW | 600/5 | 96x96 | WT96AN | 360 kW |
| M130LP. | SWT96AN 1000/5A 600kW | 1000/5 | 96x96 | WT96AN | 600 kW |
| M130LR. | SWT96AN 1500/5A 900kW | 1500/5 | 96x96 | WT96AN | 900 kW |
| M130LS. | SWT96AN 2000/5A 1,2MW | 2000/5 | 96x96 | WT96AN | 1.2 MW |
| M130LU. | SWT96AN 3000/5A 1,8MW | 3000/5 | 96x96 | WT96AN | 1.8 MW |
| M130LV. | SWT96AN 4000/5A 2,4MW | 4000/5 | 96x96 | WT96AN | 2,4 MW |
| M130LW. | SWT96AN 5000/5A 3MW | 5000/5 | 96x96 | WT96AN | 3 MW |