

## Tapa cubrebornas 48x48

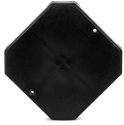
Tapa cubrebornas 48x48, Capuchon couvre-bornes (IP 20) 48 x 48,

Code: M19921.

### Spécifications

#### Caractéristiques mécaniques

Taille (mm) larg. x haut. x prof.	48 x 48 x 0 (mm)
Poids (kg)	0,008



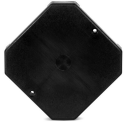
## Tapa cubrebornas 48x48

Code: M19921.

### Subelementos

Accessoires / Options pour instrumentation analogique

CODE	TYPE	Description	Modules
M1ZZ52.	Joint IP54 C48	Joint IP 54, 48 x 48	
M1ZZ53.	Joint IP54 C72	Joint IP 54, 72 x 72	
M1ZZ54.	Joint IP54 C96		96x96
M1ZZ55.	Joint IP54 C144		144x144
M19941.	FIP-C48	Protection IP 65, 48 x 48	
M19942.	FIP-C72	Protection IP 65, 72 x 72	
M19943.	FIP-C96		96x96
M19944.	FIP-C144		144x144
M19921.	Tapa cubrebornas 48x48	Capuchon couvre-bornes (IP 20) 48 x 48	
M19922.	Tapa cubrebornas 72x72	Capuchon couvre-bornes (IP 20) 72 x 72	
M19923.	Tapa cubrebornas 96x96	Capuchon couvre-bornes (IP 20) 96 x 96	



## Tapa cubrebornas 48x48

---

Code: M19921.