

## CirBEON-50

CirBEON-50, Power dynamic control sensor

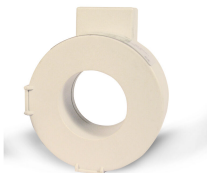
Code: V42008. DESCATALOGADO

> Contracted power (kW): 11,5

### Application

The **CirBEON** model must be chosen based on contracted power:

- 16 A for 3,68 kW
- 20 A for 4,60 kW
- 25 A for 5,75 kW
- 30 A for 6,90 kW
- 35 A for 8,05 kW
- 40 A for 9,20 kW
- 45 A for 10,35 kW
- 50 A for 11,50 kW
- 63 A for 14,49 kW



# CirBEON-50

Code: V42008.

## Specifications

### Electrical characteristics

Insulation voltage between terminals S1-S2	0.72 / 3 kV
--	-------------

### Environmental characteristics

Protection class	IP 20
------------------	-------

### Mechanical characteristics

Envelope	Polyester
Weight (kg)	0,03

### Current measurement circuit

Transformation ratio	50 / 0.05 A
----------------------	-------------

### Measurement accuracy

Accuracy	Clase 1
----------	---------

**CirBEON**  
Sensor for dynamic recharge power control

CODE	TYPE	Contracted power (kW)
V42009.	CirBEON-63	14,49

Compatible with eHOME series equipment Maximum distance to the recharging equipment 200 m. Polyester encapsulation, IP 20. Dimensions: 60 x 32 mm



## CirBEON-50

Code: V42008.

### Connections

