

CirBEON-40

CirBEON-40, Power dynamic control sensor

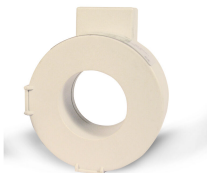
Code: V42006. **DESCATALOGADO**

> Contracted power (kW): 9,2

Application

The **CirBEON** model must be chosen based on contracted power:

- 16 A for 3,68 kW
- 20 A for 4,60 kW
- 25 A for 5,75 kW
- 30 A for 6,90 kW
- 35 A for 8,05 kW
- 40 A for 9,20 kW
- 45 A for 10,35 kW
- 50 A for 11,50 kW
- 63 A for 14,49 kW



CirBEON-40

Code: V42006.

Specifications

Electrical characteristics

Insulation voltage between terminals S1-S2	0.72/3 kV
--	-----------

Environmental characteristics

Protection class	IP 20
------------------	-------

Mechanical characteristics

Envelope	Polyester
Weight (kg)	0,16

Current measurement circuit

Transformation ratio	40/0.05 A
----------------------	-----------

Measurement accuracy

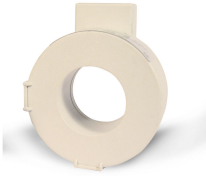
Accuracy	Clase 1
----------	---------

CirBEON

Sensor for dynamic recharge power control

CODE	TYPE	Contracted power (kW)
V42009.	CirBEON-63	14,49

Compatible with eHOME series equipment Maximum distance to the recharging equipment 200 m. Polyester encapsulation, IP 20. Dimensions: 60 x 32 mm



CirBEON-40

Code: V42006.

Connections

