

CirBEON-25

CirBEON-25, Power dynamic control sensor

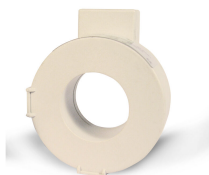
Code: V42003.

> Contracted power (kW): 5,75

Application

The **CirBEON** model must be chosen based on contracted power:

- 16 A for 3,68 kW
- 20 A for 4,60 kW
- 25 A for 5,75 kW
- 30 A for 6,90 kW
- 35 A for 8,05 kW
- 40 A for 9,20 kW
- 45 A for 10,35 kW
- 50 A for 11,50 kW
- 63 A for 14,49 kW



CirBEON-25

Code: V42003.

Specifications

Electrical characteristics

Insulation voltage between terminals S1-S2 0.72/3 kV

Environmental characteristics

Protection class IP 20

Mechanical characteristics

Envelope Polyester

Weight (kg) 0,065

Current measurement circuit

Transformation ratio 25/0.05 A

Measurement accuracy

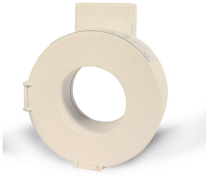
Accuracy Clase 1

CirBEON

Sensor for dynamic recharge power control

CODE	TYPE	Contracted power (kW)
V42001.	CirBEON-16	3,68
V42002.	CirBEON-20	4,6
V42003.	CirBEON-25	5,75
V42004.	CirBEON-30	6,9
V42005.	CirBEON-35	8,05
V42006.	CirBEON-40	9,2
V42007.	CirBEON-45	10,35
V42008.	CirBEON-50	11,5
V42009.	CirBEON-63	14,49

Compatible with eHOME series equipment Maximum distance to the recharging equipment 200 m. Polyester encapsulation, IP 20. Dimensions: 60 x 32 mm



CirBEON-25

Code: V42003.

Connections

