

CirBEON-20

CirBEON-20, Power dynamic control sensor

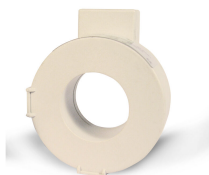
Code: V42002.

> Contracted power (kW): 4,6

Application

The **CirBEON** model must be chosen based on contracted power:

- 16 A for 3,68 kW
- 20 A for 4,60 kW
- 25 A for 5,75 kW
- 30 A for 6,90 kW
- 35 A for 8,05 kW
- 40 A for 9,20 kW
- 45 A for 10,35 kW
- 50 A for 11,50 kW
- 63 A for 14,49 kW



CirBEON-20

Code: V42002.

Specifications

Electrical characteristics

Insulation voltage between terminals S1-S2 0.72/3 kV

Environmental characteristics

Protection class IP 20

Mechanical characteristics

Envelope Polyester

Weight (kg) 0,298

Current measurement circuit

Transformation ratio 20/0.05 A

Measurement accuracy

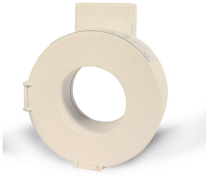
Accuracy Clase 1

CirBEON

Sensor for dynamic recharge power control

| CODE | TYPE | Contracted power (kW) |
|---------|------------|-----------------------|
| V42001. | CirBEON-16 | 3,68 |
| V42002. | CirBEON-20 | 4,6 |
| V42003. | CirBEON-25 | 5,75 |
| V42004. | CirBEON-30 | 6,9 |
| V42005. | CirBEON-35 | 8,05 |
| V42006. | CirBEON-40 | 9,2 |
| V42007. | CirBEON-45 | 10,35 |
| V42008. | CirBEON-50 | 11,5 |
| V42009. | CirBEON-63 | 14,49 |

Compatible with eHOME series equipment. Maximum distance to the recharging equipment 200 m. Polyester encapsulation, IP 20. Dimensions: 60 x 32 mm



CirBEON-20

Code: V42002.

Connections

