



## PS HDR-30-12

PS HDR-30-12, 12 Vdc, 2A power supply,

Code: Q4994L.

### Specifications

#### AC power supply

Frequency	47 ~ 63 Hz
Nominal voltage	85 ... 264 Vca ( $\pm 5\%$ )

#### DC power supply

Nominal voltage	120 ... 370 Vdc ( $\pm 5\%$ )
-----------------	-------------------------------

#### Mechanical characteristics

Size (mm) width x height x depth	35 x 90 x 54.5 (mm)
Weight (kg)	0,1

#### Environmental characteristics

Relative humidity (without condensation)	20 ... 90 %
Working temperature	-40 ... +85 °C

#### Standards

Certifications	UL62368-1, UL508, TÜV, EAC (TP TC 004), BSMI, BIS
Electrical safety, Maximum height (m)	2000
Electrical safety, Installation category	CAT II
Standards	EN61558, EN50178, EN60664-1, EN62477-1, UL62368-1, UL508, BS EN/EN61558-2-16, BS EN/EN61558-1, IEC62368-1, EAC TP TC 004, BSMI CNS15598-1, BIS IS13252 (Part 1):2010 / IEC 60950-1:2006, EN55032 (CISPR32) Class B, EN61000-3-2 Class A, EN61000-3-3, EN61000-4-2, EN61000-4-3, EN61000-4-4, EN61000-4-5, EN61000-4-6, EN61000-4-8, EN61000-4-11, IEC60068-2-6

#### Electrical safety

Insulation	Class II
------------	----------

#### Power supply

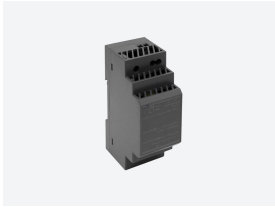
Maximum output voltage / current	12 Vcc / 2 A
----------------------------------	--------------

#### Power supply output

Power	24 W
Voltage	12 Vcc

#### Fuente Alimentación

Power Supply



## PS HDR-30-12

Router industrial

Code: Q4994L.

CODE	TYPE	Description
Q4994L.	PS HDR-30-12	12 Vdc power supply