



RECmax-CVM 2P D2-32

RECmax-CVM 2P D2-32, Self-reclosing residual current relay with power analyzer functions, 2-pole D-curve

Code: P2B135. [CONSULTAR DISPONIBILIDAD](#)

- > Poles: 2
- > In (A): 32 A
- > Breaking element: built-in
- > Curve: D

Description

Self-resettable cut-off device with ultra-immunised circuit breaker and residual current protection and built-in power analyzer. Programmable unit with display, which measures leakage currents (residual current protection) and orders the disconnection or reclosing of the circuit breaker (circuit breaker protection) using an engine that regulates it mechanically. The measurement of leakage currents, $I_{\Delta n}$, requires an external residual current transformer of the **WGC** type, which comes in the kit. It also has a built-in power analyzer that enables monitoring of up to 19 electrical parameters using the display or the built-in communications, with voltage measurement built into the unit and current measurement through the use of an external **MC1** (for 2 poles) or **MC3** (for 4 poles) current transformer, which comes in the kit.

This system is commonly used in single-phase and three-phase electrical installations that require a highly continuous electric supply. It has inputs/outputs that allow users to have information about and control of the status of the electrical installation where it is working. LED display and backlit (LCD) display:

- Overcurrent and residual current protection and reclosing
- Trip current intensity of the protection.
- Number of reclosings
- Protection status messages.
- Measurement of electrical values (voltage, current, active power, $\cos \varphi$) (other values via communications).

Application

The **RECmaxCVM** kit ensures circuit breaker and residual current protection with automatic reclosing by default after a differential relay, overload or short-circuit trip. It also measures the electrical parameters of the circuit it protects. It is a very suitable solution for infrastructures located in areas that make it difficult to control and monitor. It can be installed in the electric panels of:

- Telephone systems
- TDT systems
- Information systems, UPS systems



RECmax-CVM 2P D2-32

Residual current circuit breaker with automatic reclosing and measurement

Code: P2B135.

Specifications

AC power supply	
Installation category	CAT III 300 V
Consumption	7 VA
Frequency	50 / 60 Hz.
Nominal voltage	230V ~ ± 20% (L1-N)
Mechanical characteristics	
Size (mm) width x height x depth	97 x 111.5 x 82 (mm)
Envelope	Plastic V0
Fastening	DIN rail
Weight (kg)	0,532
Environmental characteristics	
Protection class	IP 20
Relative humidity (without condensation)	5 ... 95 %
Storage temperature	-30 ... +70 °C
Working temperature	-10 ... +55 °C
Electrical characteristics	
Earthing system	TT - TN
Current measurement circuit	
Installation category	CAT III 300 V~
Nominal current (In)	... / 250 mA
Phase current measuring range	1 ... 100 % In
Minimum current measurement	0,2 % In
Voltage measurement circuit	
Installation category	CAT III 600 V
Sampling frequency	50/60 Hz
Input impedance	400 kΩ
Frequency measuring range	50/60 Hz
Nominal voltage	230 V ~ ±20 %
Standards	
Electrical safety, Maximum height (m)	2000
Standards	IEC TR 60755, IEC 60898-1, DIN EN 50022, IEC 60947-2-M, IEC 61010-1-3ª Ed., IEC 61000-6-4, IEC 62053-21, IEC 62053-23, IEC 61557-12



RECmax-CVM 2P D2-32

Residual current circuit breaker with automatic reclosing and measurement

Code: P2B135.

User interface

LED	2 LED
Keyboard	3 keys
Display type	LCD

Measurement accuracy

Phase current measurement	5 % (for $I_N > 10\%$ F.E.), value calculated from the vector sum measured in the phase currents.
Reactive energy measurement (kvarh)	2%
Reactive power measurement (kvar)	2 % ± 2 digit
Active energy measurement (kWh)	1%
Active power measurement (kW)	1% ± 2 digits
Phase voltage measurement	0,5 % ± 1 digit

Differential protection

Sensitivity ($I\Delta n$), A	0,03 - 0,1 - 0,3 - 0,5 - 1 A (programable)
Delay time ($t\Delta$)	Programmable trip delay (IEC 60947-2-M)
Transformer	External, WGC-20SC series

Thermal-magnetic protection

Trip curve, Type	D
Nominal current I_n (A)	32
Ultimate short-circuit breaking capacity (I_{cu}) / service short-circuit breaking capacity (I_{cs}), in DC (IEC 60947-2)	30 kA
DC voltage breaking capacity (IEC 60947-2)	< 125 V
AC ultimate short-circuit breaking capacity (I_{cu}) (IEC 60947-2)	20 kA
V~ Breaking capacity (IEC 60947-2)	240 V ~
Nominal voltage	240 / 415 V ~

Serial communication

Protocol	Modbus/RTU
Technology / Type	RS-485

RECmax-CVM

Self-reclosing residual current relay with power analyzer functions, transformers included

CODE	TYPE	Poles	I_n (A)	Curve
2 Poles, C Curve				
P2B111.	RECmax-CVM 2P C2-10	2	10 A	C
P2B112.	RECmax-CVM 2P C2-16	2	16 A	C



RECmax-CVM 2P D2-32

Residual current circuit breaker with automatic reclosing and measurement

Code: P2B135.

CODE	TYPE	Poles	In (A)	Curve
P2B113.	RECmax-CVM 2P C2-20	2	20 A	C
P2B114.	RECmax-CVM 2P C2-25	2	25 A	C
P2B115.	RECmax-CVM 2P C2-32	2	32 A	C
P2B116.	RECmax-CVM 2P C2-40	2	40 A	C
P2B117.	RECmax-CVM 2P C2-50	2	50 A	C
P2B118.	RECmax-CVM 2P C2-63	2	63 A	C
4 Poles, C Curve				
P2B121.	RECmax-CVM 4P C4-10	4	10 A	C
P2B122.	RECmax-CVM 4P C4-16	4	16 A	C
P2B123.	RECmax-CVM 4P C4-20	4	20 A	C
P2B124.	RECmax-CVM 4P C4-25	4	25 A	C
P2B125.	RECmax-CVM 4P C4-32	4	32 A	C
P2B126.	RECmax-CVM 4P C4-40	4	40 A	C
P2B127.	RECmax-CVM 4P C4-50	4	50 A	C
P2B128.	RECmax-CVM 4P C4-63	4	63 A	C
2 Poles, D Curve				
P2B137.	RECmax-CVM 2P D2-50	2	50 A	D
P2B138.	RECmax-CVM 2P D2-63	2	63 A	D
4 Poles, D Curve				
P2B141.	RECmax-CVM 4P D4-10	4	10 A	D
P2B143.	RECmax-CVM 4P D4-20	4	20 A	D
P2B144.	RECmax-CVM 4P D4-25	4	25 A	D
P2B146.	RECmax-CVM 4P D4-40	4	40 A	D
P2B147.	RECmax-CVM 4P D4-50	4	50 A	D
P2B148.	RECmax-CVM 4P D4-63	4	63 A	D

All models feature the WGC20/30-SC residual current transformer and MC-3 or MC-1 measuring transformer with connected terminal. C/D curve circuit breaker with 6 kA cut off power (IEC 60898).

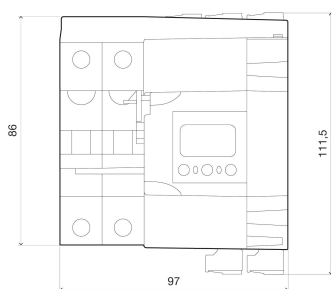
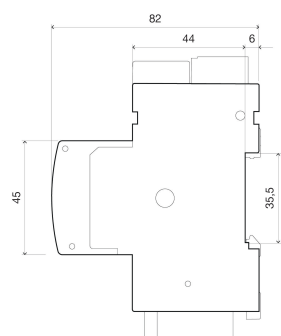


RECmax-CVM 2P D2-32

Residual current circuit breaker with automatic reclosing and measurement

Code: P2B135.

Dimensions



Connections

