



## MT-FDE 125A IV

MT-FDE 125A IV, Circuit breaker

Code: P20D72.

> Poles: 4

> In (A): 125 A

### Specifications

#### AC power supply

Frequency	50 ... 60 Hz
-----------	--------------

#### Mechanical characteristics

Size (mm) width x height x depth	108 x 130 x 185 (mm)
Fastening	Panel (base + plug-in socket)
Weight (kg)	3,4

#### Environmental characteristics

Protection class	IP 40 (DIN 40050)
Storage temperature	-55 ... +55 °C
Operating temperature	-25 ... +55 °C

#### Motor

On / off pulse time	50 / 50 ms
Minimum voltage	210 V ~
Nominal voltage	230 V ~

#### Thermal-magnetic protection

Trip curve, Type	C ó D (según tipo)
Nominal current In (A)	125
Breaking capacity	25 kA (IEC 60947-2)
Nominal voltage	240 / 415 V ~

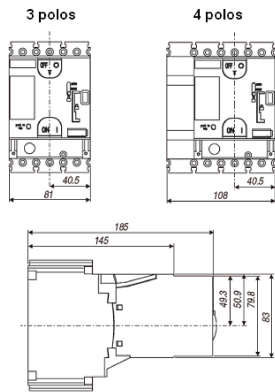


# MT-FDE 125A IV

Motorized circuit-breaker (from 63 A)

Code: P20D72.

## Dimensions



## Connections

