



MT-FDE 100A IV

MT-FDE 100A IV, Circuit breaker

Code: P20D71. DESCATALOGADO

- > Poles: 4
- > In (A): 100 A

Description

Automatic switch with remote control of the **MT-FDE** Series, for currents of 80 to 250 A, 3 and 4 poles. Responsible for the protection against shortcircuits and overloads, but also used as a circuit breaker. The switch can be reclosed with two methods, depending on the adjustment of the motor group in the operations mode:

- "MANU": executed manually with the same switch, following the OFF and ON sequence.
- "AUTO": carried out with an electrical impulse, following the OFF and ON sequence.

Application

The MT-FDE Series is composed of motorized circuit breakers that can be activated remotely and can be used in any application that uses a connection/disconnection remote control. They are also used as circuit breakers associated to the self-reclosing relays, for example, RGU-10 MT or RRM. They are a vital accessory in the self-reclosing overload and residual current protection process.



MT-FDE 100A IV

Motorized circuit-breaker (from 63 A)

Code: P20D71.

Specifications

AC power supply

Frequency	50 ... 60 Hz
-----------	--------------

Mechanical characteristics

Size (mm) width x height x depth	108 x 130 x 185 (mm)
Fastening	Panel (base + plug-in socket)
Weight (kg)	2,38

Environmental characteristics

Protection class	IP 40 (DIN 40050)
Storage temperature	-55 ... +55 °C
Operating temperature	-25 ... +55 °C

Motor

On / off pulse time	50 / 50 ms
Minimum voltage	210 V ~
Nominal voltage	230 V ~

Thermal-magnetic protection

Trip curve, Type	C ó D (según tipo)
Nominal current I _n (A)	100
Breaking capacity	25 kA (IEC 60947-2)
Nominal voltage	240 / 415 V ~

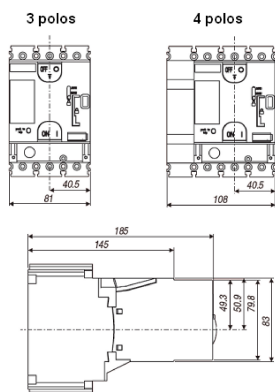


MT-FDE 100A IV

Motorized circuit-breaker (from 63 A)

Code: P20D71.

Dimensions



Connections

