



## WGB-35-TB30

WGB-35-TB30, Residual current relay

Code: P16111.

- > Usefull diam.(mm): 35
- > Delay: INS
- > Sensitivity: 30 mA

### Description

Residual current protection device for the protection of people and property against fault currents, such as:

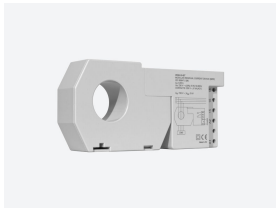
- Sinusoidal alternating currents and pulsating residual direct currents..
- Sinusoidal alternating currents, up to 1 kHz.
- Direct currents

For installations up to 125 A and sensitivities of 30 or 300 mA. INSTantaneous/SElective activation of the circuit breaker, circuit breaker with fast trigger coil or contactor.

### Application

All electrical installations where process continuity is critical and protection of persons (30 mA) and machines (300 mA) is required, with non-adjustable immediate or SElective activation.

- Computer systems (UPS systems)
- Speed drives
- Photovoltaic installations
- Electric Vehicle Charging systems



## WGB-35-TB30

Transformer with built-in residual current relay (Class B)

Code: P16111.

### Specifications

#### AC power supply

Consumption	6 VA
Frequency	50 ... 60 Hz
Nominal voltage	230V ~ ± 20%

#### Mechanical characteristics

Size (mm) width x height x depth	166 x 79 x 48 (mm)
Envelope	Polycarbonate V0
Weight (kg)	0,25

#### Environmental characteristics

Protection class	IP 40
Relative humidity (without condensation)	5 ... 95 %
Storage temperature	-15 ... +55 °C
Working temperature	-10 ... +50 °C

#### Specific technical characteristics of current sensors

Trigger point setting	85 % of nominal earth leakage current
Harmonic filtering	2nd order filter (Fc = 400 Hz)
Waveform measurements	2nd order filter (Fc = 400 Hz)
Inner diameter Ø (mm)	35 mm
Trip point tolerance	± 15 %

#### Current measurement circuit

Nominal current (In)	63 A
----------------------	------

#### Standards

Electrical safety, Maximum height (m)	2000
Standards	IEC 60755, IEC 62423, IEC 60947-2-M

#### User interface

LED	2 LED
Keyboard	2 keys

#### Digital relay outputs

AC11 Ie/Ue	6 A / 250 V
Electrical life	30 x 10 <sup>3</sup> (250Vca / 5A)
Mechanical life	5 x 10 <sup>6</sup>



## WGB-35-TB30

Transformer with built-in residual current relay (Class B)

Code: P16111.

Maximum switching capacity 1500 W (AC1)

### Differential protection

Type	Type B
Sensitivity ( $I_{\Delta n}$ ), A	0,03
Delay time ( $t_{\Delta}$ )	INS
Transformer	Built-in earth leakage transformer, 35 mm

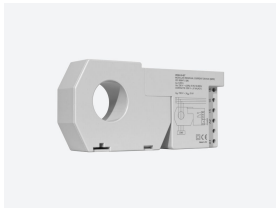
### Protection

LED indication	Power supply voltage Earth leakage tripping
Circuit breaker type	Magnet with fast trigger coil or contactor

### WGB-35-TB

Type B relay with built-in residual current transformer

CODE	TYPE	Inner diameter (mm)	Sensitivity	Delay
P16111.	WGB-35-TB30	35	30 mA	INS
P16121.	WGB-35-TB300	35	300 mA	INS
P16131.	WGB-35-TB300S	35	300 mA	SEL

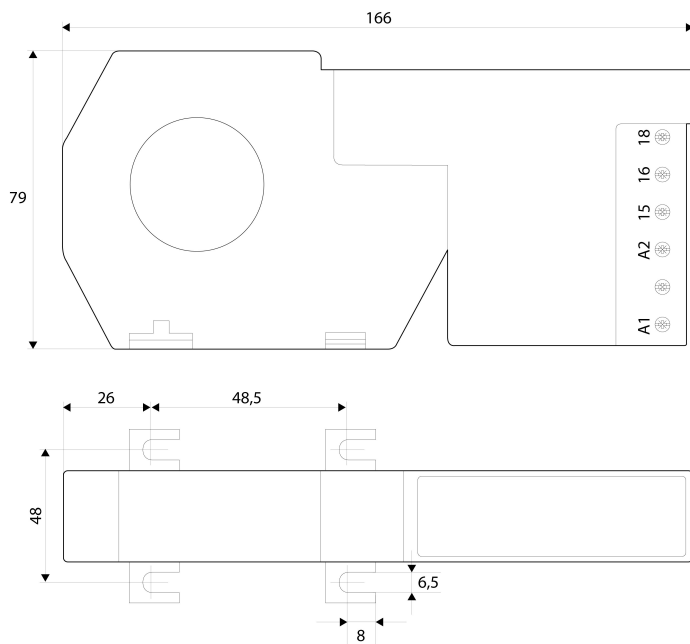


# WGB-35-TB30

Transformer with built-in residual current relay (Class B)

Code: P16111.

## Dimensions



## Connections

