



CBS-2000AB

CBS-2000AB, Multi-channel leakage current monitoring relay type A and type B

Code: P12B02.

- > Protocol: Modbus/RTU
- > Módulos: 6
- > Pre-alarm relay: Yes
- > Communications: RS-485
- > N° relays: 2
- > N° Input channels: 16 (A) / 4 (B)
- > Power supply: 230 V ~ ($\pm 15\%$)
- > Sensitivity: 30 ... 3000 mA
- > Mounting: DIN rail

Description

The **CBS-2000AB** is a hybrid earth leakage current monitoring device that can be used to connect up to 16 type-A channels via transformers in the **WGC** range, and 4 type-B channels using transformers in the **WGB** range.

The device has a screen to display the 20 channels, 2 relays (alarm and pre-alarm) and RS-485 communications.

Application

The **CBS-2000AB** is suitable for installations with all neutral regimes: TT, TN and IT, where residual current monitoring is required.



CBS-2000AB

Type-A & B earth leakage monitoring relay with 20 channels

Code: P12B02.

Specifications

AC power supply

Installation category	CAT III 300V
Consumption	15 VA
Frequency	50 ... 60 Hz
Nominal voltage	230 V~ ($\pm 15\%$)

Mechanical characteristics

Size (mm) width x height x depth	105 x 117.85 x 74 (mm)
Envelope	Self-extinguishing V0 plastic
Fastening	DIN rail
Weight (kg)	0,55

Environmental characteristics

Protection class	IP 30, IP 40 (Front) IK 08
Relative humidity (without condensation)	5 ... 95 %
Storage temperature	-20 ... +70 °C
Working temperature	-10 ... +50 °C

Electrical characteristics

Conditional short-circuit current (Icc)	Depends on the circuit breaker
Sensor	Type A: WGC - WGS Type B: WGB
Type	Type A (50 ... 60 Hz.) Type B (DC: 0 Hz.; AC: 50 Hz ... 1 kHz.)

Digital inputs

Input impedance	2 k Ω
Input/output insulation	5.3 kV
Type	Potential-free contact

Standards

Electrical safety, Maximum height (m)	2000
Electrical safety, Installation category	CAT III 300V ~
Electrical safety, Contamination level/class	2
Standards	IEC 62020-1

User interface

LED	2
Keyboard	3 keys
Display type	LCD (negative)



CBS-2000AB

Type-A & B earth leakage monitoring relay with 20 channels

Code: P12B02.

Digital relay outputs

Quantity	2
Maximum current	6 A
Maximum open contact voltage	230 V ~
Electrical life	60 x 10 ³ (250 V ~ / 5A)
Mechanical life	10 x 10 ⁶
Maximum switching capacity	1500 VA

Differential protection

Delay time (t Δ)	Type A: 0.1 - 0.3 - 0.5 - 0.8 - 1 - 2 - 3 - 5 s Type B: INS - S - 0.1 - 0.2 - 0.3 - 0.4 - 0.5 - 0.8 - 1 - 3 - 5 s
--------------------------	---

Serial communication

Protocol	Modbus/RTU
Technology / Type	RS-485

CBS-2000AB

20 type A/B residual current channels monitoring

CODE	TYPE	N° relays	N° Input channels	Communications	Protocol	Módulos	Pre-alarm relay	Power supply
P12B02.	CBS-2000AB	2	16 (A) / 4 (B)	RS-485	Modbus/RTU	6	Yes	230 V ~ (\pm 15%)

Associated with type WGC-type residual current transformers for type A channels and WGB-type for type B channels.

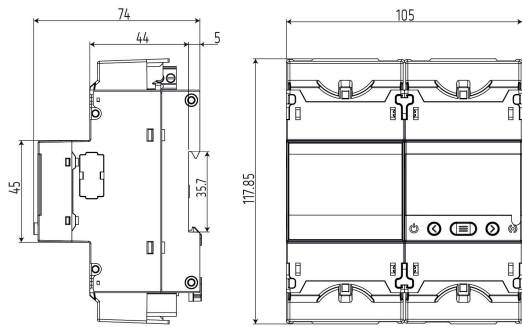


CBS-2000AB

Type-A & B earth leakage monitoring relay with 20 channels

Code: P12B02.

Dimensions



Connections

