

## WGB-110

WGB-110, residual current transformers for type-B residual current relays

Code: P11B55.

- > Usefull diam.(mm): 110.5
- >  $I_{\Delta n}$  (A): 0.03 ... 3 A
- > Max. Current (A): 400

### Description

The residual current transformers of the **WGB** range are especially designed to protect and monitor B-type loads (**IEC 60755**), and are suitable for measuring AC, DC and pulsating leakage currents.

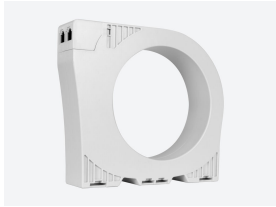
The range of **WGB** differential transformers is designed for use with the **RGU-100B** or **CBS-400B** electronic relays, which give them the associated trip current (sensitivity).

The transformers have an Ethernet port to connect them using this type of cable with the relay, which transmits all the readings and other information on the protected or monitored line.

### Application

Residual current protection or monitoring of single-phase or three-phase electric loads in alternating current with direct current components, with frequencies of up to 1 kHz, such as:

- Variable speed drives.
- UPS.
- Photovoltaic Facilities.
- Electrical Vehicle Charging.
- Active filters.



## WGB-110

Residual current transformers for type-B residual current relays

Code: P11B55.

### Specifications

#### Electrical characteristics

Cable: Connector type RJ 45

#### Mechanical characteristics

Size (mm) width x height x depth 170 x 153.5 x 58 (mm)

Weight (kg) 0,69

#### Environmental characteristics

Thermal Class 150 °C

Storage temperature -20 ... + 70 °C

Working temperature -10 ... +50 °C

#### Specific technical characteristics of current sensors

Sampling frequency 50 ... 1 kHz

Maximum current 400 A

Inner diameter Ø (mm) 110,5

Operating voltage  $\leq 750 \text{ V} \sim, \leq 750 \text{ V}_{cc}$

#### Standards

Electrical safety, Maximum height (m) 2000

Standards IEC 60947-2-M

#### Measurement accuracy

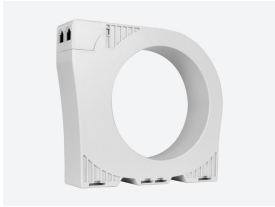
Phase current measurement 30 mA ( $\pm 2$  mA) / 100 mA ( $\pm 5$  mA) 300 mA ( $\pm 20$  mA) / 500 mA ( $\pm 20$  mA) / 1 A ( $\pm 200$  mA) / 3 A ( $\pm 200$  mA)

#### WGB

Residual current transformers for type-B relays

CODE	TYPE	Inner diameter (mm)	$I\Delta n$ (A)	$I_n$ (A)
P11B52.	WGB-35	35.5	0.03 ... 3 A	80
P11B53.	WGB-55	55.5	0.03 ... 3 A	160
P11B54.	WGB-80	80.5	0.03 ... 3 A	250
P11B55.	WGB-110	110.5	0.03 ... 3 A	400

Only for relays type RGU-100B and CBS-400B



## WGB-110

---

Residual current transformers for type-B residual current relays

Code: P11B55.

## Dimensions

---

