



TQR-8 600/5A

TQR-8 600/5A, Split core current transformer

Code: M7603B.

- > Inner diameter (mm): 80
- > System: Single-phase
- > Class 0,5 Power (VA): 1,5
- > Class 1 Power (VA): 2
- > Class 3 Power (VA): 4
- > Measurement Range (A): 600/5
- > Input current: 600 A
- > Transformer type: Split core

Description

The range of TQR transformers has been designed to facilitate the installation through its split core that allows for its placement without interrupting the supply, both in installations with cable and with flat beds. Its main features are:

- Types up to 2000 A of current
- Codifiable types in secondary current ... /5 A, .../1 A and ... /250 mA
- 80 mm rounded inner diameter
- Certified transformers
- Possibility of clamping bedplate with flange

Application

Ideal for installations where it is not possible to interrupt the power supply to install the transformers.



TQR-8 600/5A

Code: M7603B.

Specifications

Electrical characteristics

Permanent overload	1,2 In
Safety factor (SF)	10
Power	1,5(Class 0.5) , 2(Class 1) , 4(Class 3)
Insulation voltage between terminals S1-S2	3 kV

Mechanical characteristics

Size (mm) width x height x depth	216 x 173 x 43.1 (mm)
Envelope	Plastic wrap V0 self-extinguishing, UL 94
Fastening	Mural or DIN rail by accessory
Weight (kg)	0,952

Environmental characteristics

Thermal Class	Class B (+130 °C)
Protection class	IP 40 / IP 65 with protection gasket
Relative humidity (without condensation)	15 ... 85%
Storage temperature	-40 ... +80 °C
Working temperature	-10 ... +60 °C

Specific technical characteristics of current sensors

Inner diameter Ø (mm)	80
Operating voltage	0,72 kV~ máx.

Current measurement circuit

Nominal frequency	50 / 60 Hz
Primary current measurement	600 A
Dynamic current (Idyn)	2,5 Ith
Thermal short-circuit current (Ith)	60 In
Transformation ratio	... / 5 A

Standards

Electrical safety, Maximum height (m)	1000
Standards	UNE-EN 61869-2, UL 94

Measurement accuracy

Apparent power measurement (kVA)	0,0015 ... 0,004
----------------------------------	------------------

TQR
Current transformers split core



TQR-8 600/5A

Code: M7603B.

CODE	TYPE	Measurement Range (A)	Inner diameter (mm)	Class 0,5 Power (VA)	Class 1 Power (VA)	Class 3 Power (VA)
TQR-8						
M76037.	TQR-8 400/5A	400/5	80	-	1,5	3
M76039.	TQR-8 500/5A	500/5	80	1	1,5	3
M7603B.	TQR-8 600/5A	600/5	80	1,5	2	4
M7603D.	TQR-8 700/5A	700/5	80	2	4	8
M7603E.	TQR-8 750/5A	750/5	80	2,5	5	10
M7603F.	TQR-8 800/5A	800/5	80	3	7	15
M7603J.	TQR-8 1000/5A	1000/5	80	5	8	16
M7603L.	TQR-8 1250/5A	1250/5	80	6	10	20
M7603M.	TQR-8 1500/5A	1500/5	80	6	10	20
M7603N.	TQR-8 2000/5A	2000/5	80	8	15	25
TQR-10						
M7604B.	TQR-10 600/5A	600/5	105	1,5	2	4
M7604D.	TQR-10 700/5A	700/5	105	2	4	8
M7604E.	TQR-10 750/5A	750/5	105	2,5	5	10
M7604F.	TQR-10 800/5A	800/5	105	3	7	15
M7604J.	TQR-10 1000/5A	1000/5	105	5	8	16
M7604L.	TQR-10 1250/5A	1250/5	105	6	10	20
M7604M.	TQR-10 1500/5A	1500/5	105	6	10	20
M7604N.	TQR-10 2000/5A	2000/5	105	8	15	25

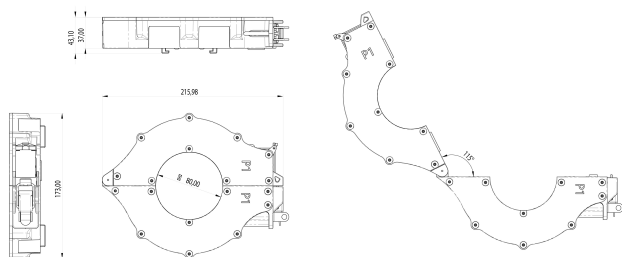
For other configurations see table of additional features



TQR-8 600/5A

Code: M7603B.

Dimensions



Connections

