

TQ-12 1000/5

TQ-12 1000/5, Split core current transformer

Code: M74051.

- > Flat strip(mm): 160 X 80
- > System: Single-phase
- > Class 0,5 Power (VA): 10
- > Class 1 Power (VA): 15
- > Class 3 Power (VA): 20
- > Measurement Range (A): 1000/5
- > Input current: 1000 A
- > Transformer type: Split core

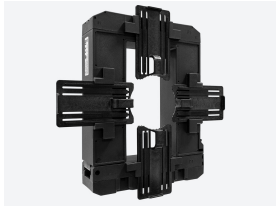
Description

The **TQ** transformer range has been designed to facilitate installation thanks to its split core, which allows it to be installed without having to shut off the power, in both cable and busbar installations. Main features:

- Types from 100 to 5000 A in the primary
- Secondary encoding types.../5 A,.../1 A,.../250 mA
- Busbar dimension from 20 x 30 mm to 160 x 80 mm
- Certified transformers
- Accessory for DIN-rail mounting (not available for TQ-12)

Application

Ideal for installations where the electricity cannot be shut off when installing the transformers.



TQ-12 1000/5

Code: M74051.

Specifications

Electrical characteristics

Safety factor (SF)	10
Power	10(Class 0.5), 15(Class 1), 20(Class 3)
Insulation voltage between terminals S1-S2	3 kV

Mechanical characteristics

Size (mm) width x height x depth	179.55 x 235 x 77.77 (mm)
Envelope	Plastic V0 self-extinguishing
Fastening	Mural or DIN rail by accessory
Weight (kg)	2,18

Environmental characteristics

Thermal Class	Class B (+130 °C)
Protection class	IP 20
Relative humidity (without condensation)	15 ... 85 %
Storage temperature	-40 ... +85 °C
Working temperature	-5 ... +40 °C

Specific technical characteristics of current sensors

Operating voltage	0,72 kV~ máx.
-------------------	---------------

Current measurement circuit

Nominal frequency	50 / 60 Hz
Primary current measurement	1000A
Dynamic current (Idyn)	2,5 Ith
Thermal short-circuit current (Ith)	60 In
Transformation ratio	... / 5 A

Standards

Electrical safety, Maximum height (m)	1000
Standards	UNE-EN 61869-1, UNE-EN 61869-2, UNE 21031, UL 94

TQ

Current transformers split core, button opening

CODE	TYPE	Measurement Range (A)	Flat strip(mm)	Class 0,5 Power (VA)	Class 1 Power (VA)	Class 3 Power (VA)
TQ-6						
M74023.	TQ-6 100 /5A	100/5	20 x 30	-	-	1
M74025.	TQ-6 150 /5A	150/5	20 x 30	-	-	1

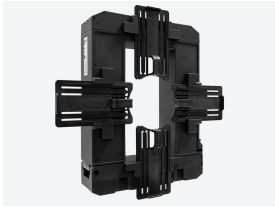


TQ-12 1000/5

Code: M74051.

CODE	TYPE	Measurement Range (A)	Flat strip(mm)	Class 0,5 Power (VA)	Class 1 Power (VA)	Class 3 Power (VA)
M74026.	TQ-6 200 /5A	200/5	20 x 30	-	-	2
M74027.	TQ-6 250 /5A	250/5	20 x 30	-	1	2
M74028.	TQ-6 300 /5A	300/5	20 x 30	0,5	1	2
M7402A.	TQ-6 400 /5A	400/5	20 x 30	1	2,5	4
TQ-8						
M74035.	TQ-8 300 /5A	300/5	60 x 80	-	1	2,5
M74037.	TQ-8 400 /5A	400/5	60 x 80	1	1,5	3
M74039.	TQ-8 500 /5A	500/5	60 x 80	2	5	7,5
M7403B.	TQ-8 600 /5A	600/5	60 x 80	2	5	8
M7403D.	TQ-8 700 /5A	700/5	60 x 80	2	5	8
M7403E.	TQ-8 750 /5A	750/5	60 x 80	2,5	5	10
M7403F.	TQ-8 800 /5A	800/5	60 x 80	3	6	10
M7403I.	TQ-8 1000 /5A	1000/5	60 x 80	5	8	15
TQ-10						
M74041.	TQ-10 500/5A	500/5	120 x 80	-	4	12
M74042.	TQ-10 600/5A	600/5	120 x 80	-	5	14
M74043.	TQ-10 750/5A	750/5	120 x 80	3	6	17
M74044.	TQ-10 800/5A	800/5	120 x 80	3	7	18
M74045.	TQ-10 1000/5A	1000/5	120 x 80	5	9	20
M74046.	TQ-10 1200/5A	1200/5	120 x 80	6	11	24
M74047.	TQ-10 1250/5A	1250/5	120 x 80	7	15	28
M74048.	TQ-10 1500/5A	1500/5	120 x 80	8	17	30
M7404A.	TQ-10 2000/5A	2000/5	120 x 80	8	17	30
TQ-12						
M74051.	TQ-12 1000/5	1000/5	160 X 80	10	15	20
M74052.	TQ-12 1500/5	1500/5	160 X 80	15	20	25
M74053.	TQ-12 2000/5	2000/5	160 X 80	15	20	25
M74054.	TQ-12 2500/5	2500/5	160 X 80	15	20	25
M74055.	TQ-12 3000/5	3000/5	160 X 80	20	25	30
M74056.	TQ-12 4000/5	4000/5	160 X 80	20	25	30
M74057.	TQ-12 5000/5	5000/5	160 X 80	20	25	30

For other configurations see table of additional features



TQ-12 1000/5

Code: M74051.

Dimensions

Connections

