



STQ-24 150/5A

STQ-24 150/5A, Split core current transformer

Code: M73717.

- > System: Single-phase
- > Class 3 Power (VA): 1
- > Measurement Range (A): 150/5
- > Input current: 150 A
- > Transformer type: Split core

Description

Open-core current transformers with compact dimensions for easy installation. This type of transformer is very easy to install and uninstall on compact panels where the reduced space makes it difficult to take current measurements. In addition, their open-core design means that they can take measurements without having to interrupt the electric supply. The primary current measurement range is from 100 A to 300 A using different secondary outputs (.../1A, .../5A or .../250mA) with a maximum admissible cable diameter of 24 mm.

Application

Quick and easy assembly are a fundamental aspect when taking temporary measurements in an electrical installation. **STQ-24** transformers can take energy measurements together with **CIRCUTOR's** power analyzers or energy meters (**CVM-MINI**, **CVM-NET**, **CVM-C**, **CVM-B**, **EDMk**, etc.) without having to interrupt the electric supply. The open-core design of the transformer makes it very easy to install and allows installers to take electrical measurements in less time.



STQ-24 150/5A

Split-core current Transformers

Code: M73717.

Specifications

Electrical characteristics

| | |
|--|----------------|
| Safety factor (SF) | 5 |
| Power | 1 VA (class 3) |
| Insulation voltage between terminals S1-S2 | 3 kV |

Mechanical characteristics

| | |
|----------------------------------|---------------------|
| Size (mm) width x height x depth | 53 x 70 x 43.2 (mm) |
| Envelope | PC Lexan™ 940-701 |
| Weight (kg) | 0,17 |

Environmental characteristics

| | |
|--|-------------------|
| Thermal Class | Class B (+130 °C) |
| Protection class | IP 20 |
| Relative humidity (without condensation) | 15 ... 85% |
| Storage temperature | -20 ... 75 °C |
| Working temperature | -5 ... +40 °C |

Specific technical characteristics of current sensors

| | |
|-----------------------|---------------|
| Inner diameter Ø (mm) | 24 |
| Operating voltage | 0,72 kV~ máx. |

Current measurement circuit

| | |
|-------------------------------------|------------|
| Nominal frequency | 50 / 60 Hz |
| Primary current measurement | 150 A |
| Allowable overload | 1,2 In |
| Dynamic current (Idyn) | 2,5 Ith |
| Thermal short-circuit current (Ith) | 60 In |
| Transformation ratio | ... / 5A |

Standards

| | |
|---------------------------------------|--------------------------------|
| Electrical safety, Maximum height (m) | 1000 |
| Standards | UNE-EN 61869-1, UNE-EN 61869-2 |

Measurement accuracy

| | |
|----------|-----------|
| Accuracy | Clase 1/3 |
|----------|-----------|

STQ
Current transformers, split core



STQ-24 150/5A

Split-core current Transformers

Code: M73717.

| CODE | TYPE | Measurement Range (A) | Class 1 Power (VA) | Class 3 Power (VA) |
|---------------|-------------------|-----------------------|--------------------|--------------------|
| 5A | | | | |
| M73715. | STQ-24 100/5A | 100/5 | - | 1 |
| M73717. | STQ-24 150/5A | 150/5 | - | 1 |
| M73718. | STQ-24 200/5A | 200/5 | - | 1 |
| M73719. | STQ-24 250/5A | 250/5 | 1 | - |
| M7371A. | STQ-24 300/5A | 300/5 | 1 | - |
| 1A | | | | |
| M737150010000 | STQ-24 100/1A | 100/1 | - | 1 |
| M737170010000 | STQ-24 150/1A | 150/1 | - | 1 |
| M737180010000 | STQ-24 200/1A | 200/1 | - | 1 |
| M737190010000 | STQ-24 250/1A | 250/1 | 1 | - |
| M7371A0010000 | STQ-24 300/1A | 300/1 | 1 | - |
| 250mA | | | | |
| M7371200A0000 | STQ-24 50/250 mA | 50/250 mA | - | 0,1 |
| M7371500A0000 | STQ-24 100/250 mA | 100/250 mA | - | 0,1 |
| M7371700A0000 | STQ-24 150/250 mA | 150/250 mA | - | 0,1 |
| M7371800A0000 | STQ-24 200/250 mA | 200/250 mA | - | 0,1 |
| M7371900A0000 | STQ-24 250/250 mA | 250/250 mA | 0,1 | - |
| M7371A00A0000 | STQ-24 300/250 mA | 300/250 mA | 0,1 | - |

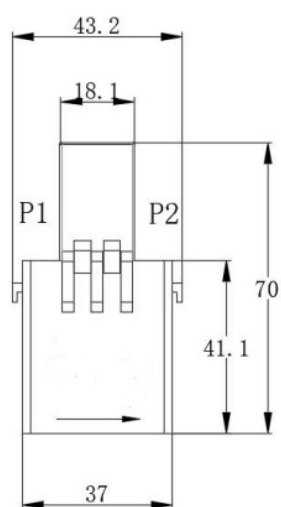
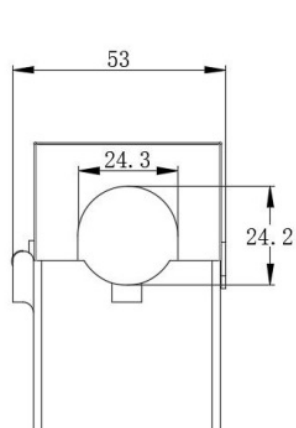


STQ-24 150/5A

Split-core current Transformers

Code: M73717.

Dimensions



Connections

