

## SHP 40A/60mV



SHP 40A/60mV, Shunt

Code: M71212. DESCATALOGADO

- > Accuracy: 1
- > Measurement Range (A): 40A/60mV
- > Input current: 40 A
- > Relation: 40A/60mV

### Description

- Shunt for the measurement of DC, from 1 A dc to 15 000 A dc, depending on the type
- Accuracy class: 0.5
- All types are supplied with 1.5 m long cables, with a section of 1.5 m<sup>2</sup>
- The standard output voltage is .../60 mV, but there are other types of outputs on demand, see coding table.

### Application

Used in DC electrical lines to obtain a voltage signal that is proportional to the current through the shunt



# SHP 40A/60mV

Shunts

Code: M71212.

## Specifications

### Electrical characteristics

|                    |        |
|--------------------|--------|
| Permanent overload | 1,2 In |
|--------------------|--------|

### Environmental characteristics

|                     |                |
|---------------------|----------------|
| Working temperature | -25 ... +60 °C |
|---------------------|----------------|

### Mechanical characteristics

|             |                               |
|-------------|-------------------------------|
| Envelope    | Manganin rods Brass terminals |
| Weight (kg) | 1,464                         |

### Current measurement circuit

|                             |   |
|-----------------------------|---|
| Nominal frequency           | 50 / 60 Hz  |
| Primary current measurement | 40 A  |
| Allowable overload          | During 5 s 10 In, yes 10 A ≤ In ≤ 500 A 5 In, yes 600 A ≤ In ≤ 2000 A 2 In, yes 2500 A ≤ In |
| Transformation ratio        | ... / 60 mV   |

### Standards

|           |                                   |
|-----------|-----------------------------------|
| Standards | DIN 43703, IEC 51, VDE 410, BS 89 |
|-----------|-----------------------------------|

### Measurement accuracy

|          |   |
|----------|---|
| Accuracy | 1 |
|----------|---|

SH  
Shunts for direct current measurement

| CODE    | TYPE          | Measurement Range (A) |
|---------|---------------|-----------------------|
| M71211. | SHP 30A/60mV  | 30A/60mV              |
| M71213. | SHP 50A/60mV  | 50A/60mV              |
| M71221. | SHB 1A/60mV   | 1A/60mV               |
| M71222. | SHB 1.5A/60mV | 1.5A/60mV             |
| M71223. | SHB 2.5A/60mV | 2.5A/60mV             |
| M71224. | SHB 4A/60mV   | 4A/60mV               |
| M71225. | SHB 5A/60mV   | 5A/60mV               |
| M71226. | SHB 6A/60mV   | 6A/60mV               |
| M71227. | SHB 10A/60mV  | 10A/60mV              |
| M71228. | SHB 15A/60mV  | 15A/60mV              |
| M71229. | SHB 25A/60mV  | 25A/60mV              |



# SHP 40A/60mV

Shunts

Code: M71212.

| CODE    | TYPE           | Measurement Range (A) |
|---------|----------------|-----------------------|
| M7122A. | SHB 30A/60mV   | 30A/60mV              |
| M7122B. | SHB 40A/60mV   | 40A/60mV              |
| M7122C. | SHB 50A/60mV   | 50A/60mV              |
| M7122D. | SHB 60A/60mV   | 60A/60mV              |
| M7122E. | SHB 80A/60mV   | 80A/60mV              |
| M7122F. | SHB 100A/60mV  | 100A/60mV             |
| M7122N. | SHB 200A/60mV  | 200A/60mV             |
| M71231. | SH 30A/60mV    | 30A/60mV              |
| M71232. | SH 40A/60mV    | 40A/60mV              |
| M71233. | SH 50A/60mV    | 50A/60mV              |
| M71234. | SH 60A/60mV    | 60A/60mV              |
| M71235. | SH 80A/60mV    | 80A/60mV              |
| M71236. | SH 100A/60mV   | 100A/60mV             |
| M71237. | SH 150A/60mV   | 150A/60mV             |
| M71238. | SH 200A/60mV   | 200A/60mV             |
| M71239. | SH 250A/60mV   | 250A/60mV             |
| M7123A. | SH 300A/60mV   | 300A/60mV             |
| M7123B. | SH 400A/60mV   | 400A/60mV             |
| M7123C. | SH 500A/60mV   | 500A/60mV             |
| M7123D. | SH 600A/60mV   | 600A/60mV             |
| M7123E. | SH 750A/60mV   | 750A/60mV             |
| M7123F. | SH 800A/60mV   | 800A/60mV             |
| M7123G. | SH 1000A/60mV  | 1000A/60mV            |
| M7123H. | SH 1200A/60mV  | 1200A/60mV            |
| M7123J. | SH 1500A/60mV  | 1500A/60mV            |
| M7123K. | SH 2000A/60mV  | 2000A/60mV            |
| M7123L. | SH 2500A/60mV  | 2500A/60mV            |
| M7123M. | SH 3000A/60mV  | 3000A/60mV            |
| M7123N. | SH 4000A/60mV  | 4000A/60mV            |
| M7123P. | SH 5000A/60mV  | 5000A/60mV            |
| M7123Q. | SH 6000A/60mV  | 6000A/60mV            |
| M7123R. | SH 7500A/60mV  | 7500A/60mV            |
| M7123T. | SH 10000A/60mV | 10000A/60mV           |
| M7123V. | SH 15000A/60mV | 15000A/60mV           |
| M7123Z. | SH 18000A/60mV | 18000A/60mV           |

SHP: Faston connection; SHB: Insulating base socket(up to 100 A); SH: Without base

For other configurations see additional performance table.  
All shunts are supplied with 1.5 m long cables with a 1.5 mm² cross-section



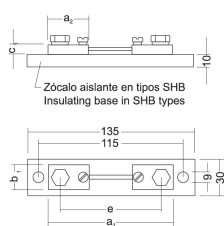
## SHP 40A/60mV

## Shunts

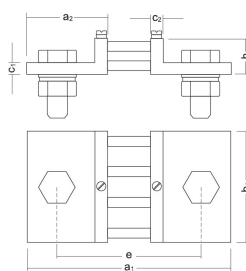
Code: M71212.

## Dimensions

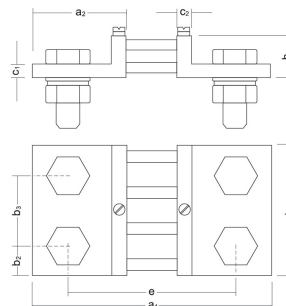
| Voltage drop mV <sub>n</sub> | Range A <sub>n</sub>                          | Fig. | a1  | a2 | b1   | b2 | b3 | c1  | c2  | e     | h        | N°<br>Current<br>connections | Current connections            |                   |             | Voltage<br>connections                                   |
|------------------------------|---|------|-----|----|------|----|----|-----|-----|-------|----------|------------------------------|--------------------------------|-------------------|-------------|--|
|                              |   |      |     |    | bowl | bZ | b3 |     |     |       |          |                              | Hexagonal<br>screws DIN<br>933 | Washer<br>DIN 125 | DIN 934 nut |  |
| 60                           | 1-1, 5-2,<br>5-6-10-15-25<br>30-40-60-100-150 | 1    | 90  | 28 | 20   | -  | -  | 8   | -   | 78    | -        | 2 x 1                        | M5 x 12                        | 5,3               | -           | 2 Screws<br>M5 x 8 DIN<br>933<br>2 Washer 5,3<br>DIN 433 |
|                              | 100   |      | 33  | 20 | -    | -  | 8  | -   | 80  | -     | 2 x 1    | M8 x 16                      | 8,4                            | -                 |             |  |
|                              | 250   | 2    | 145 | 55 | 30   | 15 | -  | 10  | 10  | 105   | 30       | 2 x 1                        | M12 x 40                       | 13                | M12         |  |
|                              | 400-600                                       |      | 40  | 20 | -    | -  | -  | -   | -   | -     | 2 x 1    | M16 x 45                     | 17                             | M16               |             |  |
|                              | 800   |      | 60  | 30 | -    | -  | -  | -   | -   | -     | 2 x 1    | M20 x 50                     | 21                             | M20               |             |  |
|                              | 1500  |      | 65  | 90 | 21   | 48 | 10 | 10  | 115 | 30    | 2 x 2    | M16 x 45                     | 17                             | M16               |             |  |
|                              | 2500  |      | 120 | 30 | 60   | 10 | 10 | 115 | 30  | 2 x 2 | M20 x 50 | 21                           | M20                            |                   |             |  |
| 150                          | 1-1, 5-2,<br>5-6-10-15-25<br>40-60-100-150    | 1    | 90  | 25 | 20   | -  | -  | 8   | -   | 78    | -        | 2 x 1                        | M5 x 12                        | 5,3               | -           |  |
|                              | 225   |      | 33  | 25 | -    | -  | 8  | -   | 205 | -     | 2 x 1    | M8 x 16                      | 8,4                            | -                 |             |  |
|                              | 250   | 2    | 270 | 55 | 30   | 15 | -  | 10  | 10  | 230   | 50       | 2 x 1                        | M12 x 40                       | 13                | M12         |  |
|                              | 400-600                                       |      | 40  | 20 | -    | -  | -  | -   | -   | -     | 2 x 1    | M16 x 45                     | 17                             | M16               |             |  |
|                              | 800   |      | 290 | 65 | 70   | 35 | -  | 10  | 10  | 240   | 60       | 2 x 1                        | M20 x 50                       | 21                | M20         |  |



SHUNT 1-150

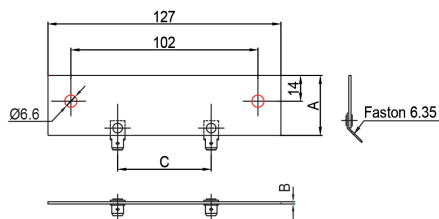


SHUNT 200-1000



SHUNT 1500-2500

SHP xxxA / 60 mV



SHP xxxA / 60 mV

| Units: (A) | A    | B    | C    |
|------------|------|------|------|
| 30         | 35   | 0.7  | 73.5 |
| 40         | 35   | 0.7  | 73.5 |
| 50         | 35   | 0.7  | 73.5 |
| 60         | 35   | 0.7  | 62   |
| 75         | 35   | 1.25 | 48   |
| 100        | 28.5 | 1.25 | 50.5 |
| 150        | 35   | 1.25 | 41.5 |
| 200        | 28.5 | 3    | 64   |