



TI-420-105-250A

TI-420-105-250A, Current transformer with converter 4 ... 20 mA

Code: M70831.

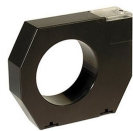
- > Inner diameter (mm): 105
- > Analog output: 4...20 mA
- > Measurement Range (A): 250
- > Input current: 250 A
- > Transformer type: Current transformer with 4 ... 20 mA converter

Description

- Needs an output power supply of 10 ... 28 V dc
- Primary current: from 2.5 to 1500 A ~, depending on the type
- Secondary current: 4 ... 20 mA
- Internal diameter: from 35 to 105 mm, depending on the type
- Busbar dimensions: from 35 to 105 mm, depending on the type

Application

Used in power lines to obtain a current proportional to the primary current rated at 4 ... 20 mA in the secondary



TI-420-105-250A

Current transformers with converter

Code: M70831.

Specifications

Auxiliary power supply

Voltage	10 ... 28 Vdc
---------	---------------

Mechanical characteristics

Size (mm) width x height x depth	170 x 146 x 33 (mm)
Weight (kg)	0,39

Environmental characteristics

Working temperature	-10°...+50 °C
---------------------	---------------

Specific technical characteristics of current sensors

Inner diameter Ø (mm)	105
Operating voltage	0,72 kV~ max.

Current measurement circuit

Nominal frequency	50 / 60 Hz
Primary current measurement	250 A
Permanent overload	1,5 In
Transformation ratio	4 ... 20 mA

Standards

Standards	IEC 44-1, UNE 21 088-1, IEC 664, VDE0110, VDE0414, UL 94, IEC 1010-1, EN 61010-1
-----------	--

Measurement accuracy

Accuracy	±1,5% In
----------	----------

TI

Current transformer with converter 4 ... 20 mA

CODE	TYPE	Measurement Range (A)	Inner diameter (mm)
10...28 Vdc supply, Output 4...20 mA			
M70811.	TI-420-35-2.5A	2.5	35
M70812.	TI-420-35-5A	5	35
M70813.	TI-420-35-10A	10	35
M70814.	TI-420-35-20A	20	35
M70815.	TI-420-35-50A	50	35
M70816.	TI-420-35-100A	100	35
M70817.	TI-420-35-250A	250	35



TI-420-105-250A

Current transformers with converter

Code: M70831.

CODE	TYPE	Measurement Range (A)	Inner diameter (mm)
M70821.	TI-420-70-100A	100	70
M70822.	TI-420-70-250A	250	70
M70823.	TI-420-70-500A	500	70
M70824.	TI-420-70-750A	750	70
M70831.	TI-420-105-250A	250	105
M70832.	TI-420-105-500A	500	105
M70833.	TI-420-105-750A	750	105
M70834.	TI-420-105-1000A	1000	105
M70835.	TI-420-105-1500A	1500	105

For greater currents, use: transformer + transducer



TI-420-105-250A

Current transformers with converter

Code: M70831.

Dimensions



Connections

