



TI-420-35-250A

TI-420-35-250A, Current transformer with converter 4 ... 20 mA

Code: M70817.

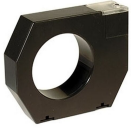
- > Inner diameter (mm): 35
- > Analog output: 4...20 mA
- > Measurement Range (A): 250
- > Input current: 250 A
- > Transformer type: Current transformer with 4 ... 20 mA converter

Description

- Needs an output power supply of 10 ... 28 V dc
- Primary current: from 2.5 to 1500 A ~, depending on the type
- Secondary current: 4 ... 20 mA
- Internal diameter: from 35 to 105 mm, depending on the type
- Busbar dimensions: from 35 to 105 mm, depending on the type

Application

Used in power lines to obtain a current proportional to the primary current rated at 4 ... 20 mA in the secondary



TI-420-35-250A

Current transformers with converter

Code: M70817.

Specifications

Auxiliary power supply

Voltage 10 ... 28 Vdc

Mechanical characteristics

Size (mm) width x height x depth 100 x 79 x 33 (mm)

Weight (kg) 0,19

Environmental characteristics

Working temperature -10°...+50 °C

Specific technical characteristics of current sensors

Inner diameter Ø (mm) 35

Operating voltage 0,72 kV~ max.

Current measurement circuit

Nominal frequency 50 / 60 Hz

Primary current measurement 250 A

Permanent overload 1,5 In

Transformation ratio 4 ... 20 mA

Standards

Standards IEC 44-1, UNE 21 088-1, IEC 664, VDE0110, VDE0414, UL 94, IEC 1010-1, EN 61010-1

Measurement accuracy

Accuracy $\pm 1,5\% I_n$

TI

Current transformer with converter 4 ... 20 mA

CODE	TYPE	Measurement Range (A)	Inner diameter (mm)
10...28 Vdc supply, Output 4...20 mA			
M70811.	TI-420-35-2.5A	2.5	35
M70812.	TI-420-35-5A	5	35
M70813.	TI-420-35-10A	10	35
M70814.	TI-420-35-20A	20	35
M70815.	TI-420-35-50A	50	35
M70816.	TI-420-35-100A	100	35
M70817.	TI-420-35-250A	250	35



TI-420-35-250A

Current transformers with converter

Code: M70817.

CODE	TYPE	Measurement Range (A)	Inner diameter (mm)
M70821.	TI-420-70-100A	100	70
M70822.	TI-420-70-250A	250	70
M70823.	TI-420-70-500A	500	70
M70824.	TI-420-70-750A	750	70
M70831.	TI-420-105-250A	250	105
M70832.	TI-420-105-500A	500	105
M70833.	TI-420-105-750A	750	105
M70834.	TI-420-105-1000A	1000	105
M70835.	TI-420-105-1500A	1500	105

For greater currents, use: transformer + transducer



TI-420-35-250A

Current transformers with converter

Code: M70817.

Dimensions



Connections

