



## TCH6.2 60/5A

TCH6.2 60/5A, Current transformers high accuracy and narrow section

Code: M7044C. **CONSULTAR DISPONIBILIDAD**

- > Flat strip(mm): 20 x 20 | 25 x 12 | 30 x 10
- > System: Single-phase
- > Class 0,2 Power (VA): 0,5
- > Measurement Range (A): 60/5
- > Input current: 60 A
- > Transformer type: Closed core

### Description

- Type: bar entrance
- Types: from 40 to 4000 A
- Internal diameter: from 20.3 to 63 mm, depending on the type
- Busbar dimensions: from 25 x 5 mm to 30 x 100 mm
- Transformer certificate sheet is attached
- Accessory on request for fixing on DIN rail (Types **TCH6** and **TCH6.2**)
- Secondary coding types .../5 A (on demand .../1 A.)

### Application

Converting a high nominal current to a lower current so that it can be measured by the unit. In installations where the electrical supply can be interrupted to install transformers and a high accuracy is required.



# TCH6.2 60/5A

Current transformers narrow section and high accuracy

Code: M7044C.

## Specifications

### Electrical characteristics

Safety factor (SF)	FS 5
Power	0.5 VA (Class 0,2)

### Mechanical characteristics

Size (mm) width x height x depth	75 x 87.16 x 71.13 (mm)
Envelope	Plastic wrap V0 self-extinguishing, UL 94
Weight (kg)	0,21

### Environmental characteristics

Thermal Class	Class B (+130 °C)
Protection class	IP 20
Relative humidity (without condensation)	15 ... 95 %

### Specific technical characteristics of current sensors

Inner diameter Ø (mm)	26
Operating voltage	0,72 kV~ max.

### Current measurement circuit

Nominal frequency	50 / 60 Hz
Primary current measurement	60 A
Dynamic current (Idyn)	2,5 Ith
Thermal short-circuit current (Ith)	60 In
Transformation ratio	... / 5 A

### Standards

Standards	IEC 44-1, BS2627
-----------	------------------

### TCH

Current transformers narrow section and high accuracy

CODE	TYPE	Measurement Range (A)	Flat strip(mm)	Class 0,2 Power (VA)	Class 0,2S Power (VA)	Class 0,5S Power (VA)
TCH6.2						
M70444.	TCH6.2 200/5A	200/5	20 x 20  25 x 12  30 x 10	5	3,5	5

For other configurations see table of additional features

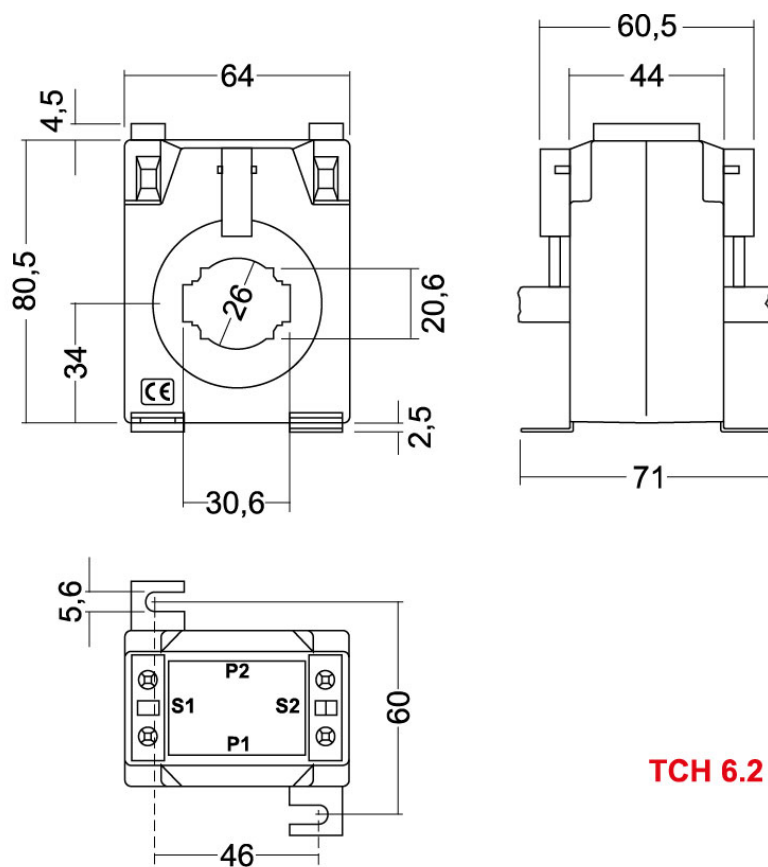


## TCH6.2 60/5A

Current transformers narrow section and high accuracy

Code: M7044C.

### Dimensions



**TCH 6.2**