



TCH6.2 400/5A

TCH6.2 400/5A, Current transformers high accuracy and narrow section

Code: M70447. **CONSULTAR DISPONIBILIDAD**

- > Flat strip(mm): 20 x 20 | 25 x 12 | 30 x 10
- > System: Single-phase
- > Class 0,2 Power (VA): 7,5
- > Class 0,2S Power (VA): 7,5
- > Class 0,5S Power (VA): 7,5
- > Measurement Range (A): 400/5
- > Input current: 400 A
- > Transformer type: Closed core

Description

- Type: bar entrance
- Types: from 40 to 4000 A
- Internal diameter: from 20.3 to 63 mm, depending on the type
- Busbar dimensions: from 25 x 5 mm to 30 x 100 mm
- Transformer certificate sheet is attached
- Accessory on request for fixing on DIN rail (Types **TCH6** and **TCH6.2**)
- Secondary coding types .../5 A (on demand .../1 A.)

Application

Converting a high nominal current to a lower current so that it can be measured by the unit. In installations where the electrical supply can be interrupted to install transformers and a high accuracy is required.



TCH6.2 400/5A

Current transformers narrow section and high accuracy

Code: M70447.

Specifications

Electrical characteristics

| | |
|--------------------|--------------------|
| Safety factor (SF) | FS 5 |
| Power | 7.5 VA (Class 0,2) |

Mechanical characteristics

| | |
|----------------------------------|---|
| Size (mm) width x height x depth | 73 x 87.14 x 71.11 (mm) |
| Envelope | Plastic wrap V0 self-extinguishing, UL 94 |
| Weight (kg) | 0,389 |

Environmental characteristics

| | |
|--|-------------------|
| Thermal Class | Class B (+130 °C) |
| Protection class | IP 20 |
| Relative humidity (without condensation) | 15 ... 95 % |

Specific technical characteristics of current sensors

| | |
|-----------------------|---------------|
| Inner diameter Ø (mm) | 26 |
| Operating voltage | 0,72 kV~ max. |

Current measurement circuit

| | |
|-------------------------------------|------------|
| Nominal frequency | 50 / 60 Hz |
| Primary current measurement | 400 A |
| Dynamic current (Idyn) | 2,5 Ith |
| Thermal short-circuit current (Ith) | 60 In |
| Transformation ratio | ... / 5 A |

Standards

| | |
|-----------|------------------|
| Standards | IEC 44-1, BS2627 |
|-----------|------------------|

For other configurations see table of additional features

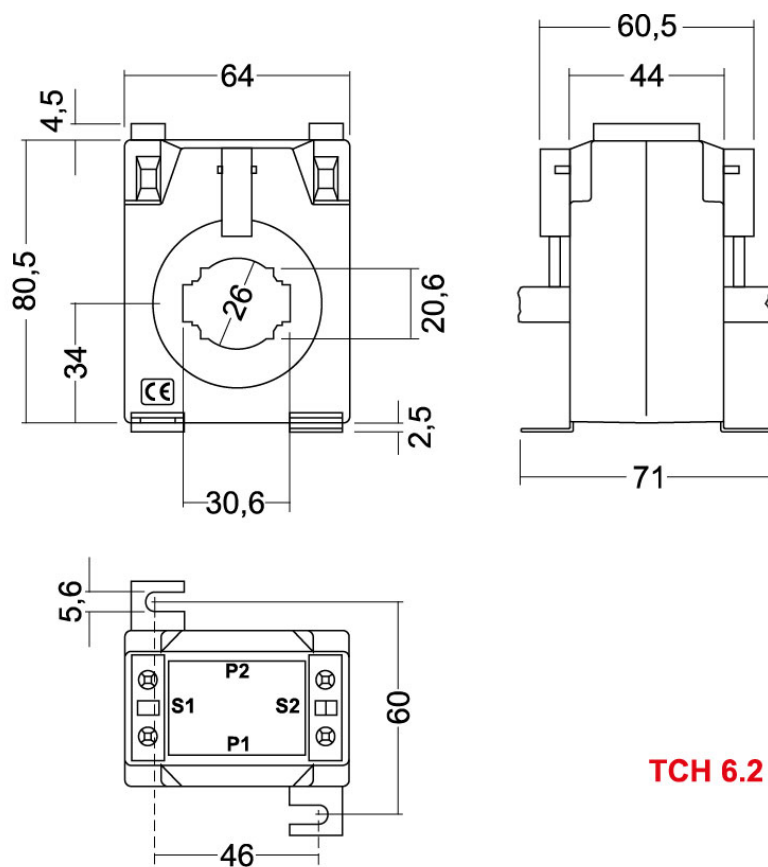


TCH6.2 400/5A

Current transformers narrow section and high accuracy

Code: M70447.

Dimensions



TCH 6.2