

TC12 800/5A

TC12 800/5A, Current transformers narrow section

Code: M7038B. **CONSULTAR DISPONIBILIDAD**

- > Flat strip(mm): 100 x 50
- > System: Single-phase
- > Class 0,5 Power (VA): 10
- > Class 1 Power (VA): 15
- > Class 3 Power (VA): 20
- > Measurement Range (A): 800/5
- > Input current: 800 A
- > Transformer type: Closed core

Description

- Type: bar entrance
- Types: from 40 to 4000 A
- Internal diameter: from 20.3 to 63 mm, depending on the type
- Busbar dimensions: from 25 x 5 mm to 30 x 100 mm
- Individual certificate available on request
- DIN rail fixing accessory (Types **TC5** and **TC6**)
- Secondary coding types .../5 A (on demand .../1 A. **TC4** not available)

Application

Converting a high nominal current to a lower current so that it can be measured by the unit. In installations where the electrical supply can be interrupted to install transformers.



TC12 800/5A

Current transformers narrow section

Code: M7038B.

Specifications

Electrical characteristics

Safety factor (SF)	FS 5
Power	15 VA (Class 1)

Mechanical characteristics

Size (mm) width x height x depth	129 x 155 x 78 (mm)
Envelope	Plastic wrap V0 self-extinguishing, UL 94
Weight (kg)	0,785

Environmental characteristics

Thermal Class	Class B (+130 °C)
Protection class	IP 20
Relative humidity (without condensation)	15 ... 95 %

Specific technical characteristics of current sensors

Operating voltage	0,72 kV~ max.
-------------------	---------------

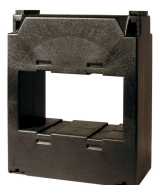
Current measurement circuit

Nominal frequency	50 / 60 Hz
Primary current measurement	800 A
Dynamic current (Idyn)	2,5 Ith
Thermal short-circuit current (Ith)	60 In
Transformation ratio	... / 5 A

Standards

Standards	IEC 61869-1, IEC 61869-2, BS2627
-----------	----------------------------------

For other configurations see table of additional features



TC12 800/5A

Current transformers narrow section

Code: M7038B.

Dimensions

