

## TP-812 1250 /5A

TP-812 1250 /5A, Split core current transformers

Code: M70147. DESCATALOGADO

- > Flat strip(mm): 80 x 120
- > System: Single-phase
- > Class 0,5 Power (VA): 7
- > Class 1 Power (VA): 15
- > Class 3 Power (VA): 28
- > Measurement Range (A): 1250/5
- > Input current: 1250 A
- > Transformer type: Split core

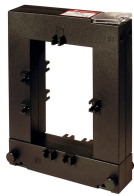
### Description

Open-core transformers that can measure current without having to interrupt the electric supply. In other words, the installation does not have to be dismantled in order to install them.

- Range: 100 to 5000 A
- Busbar dimensions: 20 x 30 mm to 80 x 160 mm
- The transformer certificate is attached.

### Application

Converting a high nominal current to a lower current so that it can be measured by the unit. They have a split core and can be installed with no need to interrupt the installation's power supply.



## TP-812 1250 /5A

Split-core measurement current transformer

Code: M70147.

### Specifications

#### Electrical characteristics

Safety factor (SF)	FS 10
Power	7 VA (Class 0,5)

#### Mechanical characteristics

Size (mm) width x height x depth	185 x 144 x 50 (mm)
Weight (kg)	1,169

#### Environmental characteristics

Thermal Class	Class B (+130 °C)
Working temperature	-5 ... 40 °C

#### Specific technical characteristics of current sensors

Operating voltage	0,72 kV~ max.
-------------------	---------------

#### Current measurement circuit

Primary current measurement	1250 A
Dynamic current (Idyn)	2,5 Ith
Thermal short-circuit current (Ith)	60 In
Transformation ratio	... / 5 A

#### Standards

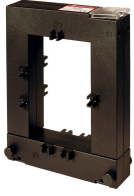
Standards	IEC 44-1, UNE 21 088-1, UL 94, VDE 0414
-----------	---

#### TP-vell

Current transformers, split core

CODE	TYPE	Measurement Range (A)	Flat strip(mm)	Class 0,5 Power (VA)	Class 1 Power (VA)	Class 3 Power (VA)
<b>TP-58</b>						
M7012B.	TP-58 200/5A	200/5	50 x 80	-	-	3

For other configurations see table of additional features

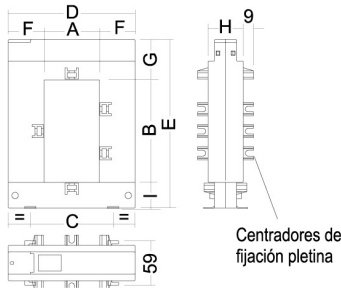


## TP-812 1250 /5A

Split-core measurement current transformer

Code: M70147.

### Dimensions



mm	TP-23	TP-58	TP-88	TP-812	TP-816
a	20	50	80	80	80
b	30	80	80	120	160
c	51	78	108	108	120
d	89	114	144	144	184
e	110	145	145	185	245
f	34	32	32	32	52
g	47	32	32	32	47
h	40	32	32	32	52
i	32	32	32	32	38