

CBC96 .../60mV

CBC96 .../60mV, Ammeter

Code: M14830.

- > Scale: 90°, P1
- > Accuracy: 1,5
- > Measurement Range (V): .../60mV
- > Modules: 96x96

Specifications

Mechanical characteristics

Size (mm) width x height x depth	96 x 96 x 85.3 (mm)
Weight (kg)	0,305

Environmental characteristics

Protection class	Panel: IP 52 (Front), IP 20 (Terminals)
Storage temperature	-25...+70 °C
Working temperature	+5 ... + 55 °C

Current measurement circuit

Consumption	60 mV
Allowable overload	1,2 In permanent / 5 In during 30s / 10 In during 5s / 40 In during 1s

Electrical characteristics

Insulation voltage, circuit	2 kV a 50Hz < 1 min entre mecanismo y caja
-----------------------------	--

Standards

Electrical safety, Maximum height (m)	2000
Standards	IEC 51, IEC 1010, IEC 529, IEC 255, IEC 278, IEC 414, IEC 144, LLOYD'S (TEST. ESP. N° 1)

Measurement accuracy

Accuracy	1,5 % FE
----------	----------

M1A

DC Ammeters

CODE	TYPE	Scale	Accuracy	Measurement Range (A)	Modules	Device	Full scale	Measure	Frequency (Hz)	Description
M10111.	EC48 100mA	90°, P2	1,5	0,1	48x48					
M10112.	EC48 150mA	90°, P2	1,5	0,15	48x48					
M10114.	EC48 250mA	90°, P2	1,5	0,25	48x48					
M10115.	EC48 300mA	90°, P2	1,5	0,3	48x48					
M10116.	EC48 400mA	90°, P2	1,5	0,4	48x48					
M10117.	EC48 500mA	90°, P2	1,5	0,5	48x48					
M10118.	EC48 600mA	90°, P2	1,5	0,6	48x48					
M10121.	EC72 100mA	90°, P2	1,5	0,1	72x72					



CBC96 .../60mV

Code: M14830.

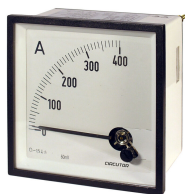
CODE	TYPE	Scale	Accuracy	Measurement Range (A)	Modules	Device	Full scale	Measure	Frequency (Hz)	Description
M10122.	EC72 150mA	90°, P2	1,5	0,15	72x72					
M10124.	EC72 250mA	90°, P2	1,5	0,25	72x72					
M10125.	EC72 300mA	90°, P2	1,5	0,3	72x72					
M10126.	EC72 400mA	90°, P2	1,5	0,4	72x72					
M10127.	EC72 500mA	90°, P2	1,5	0,5	72x72					
M10128.	EC72 600mA	90°, P2	1,5	0,6	72x72					
M10131.	EC96 100mA	90°, P2	1,5	0,1	96x96					
M10132.	EC96 150mA	90°, P2	1,5	0,15	96x96					
M10134.	EC96 250mA	90°, P2	1,5	0,25	96x96					
M10135.	EC96 300mA	90°, P2	1,5	0,3	96x96					
M10136.	EC96 400mA	90°, P2	1,5	0,4	96x96					
M10137.	EC96 500mA	90°, P2	1,5	0,5	96x96					
M10138.	EC96 600mA	90°, P2	1,5	0,6	96x96					
M10141.	EC144 100mA	90°, P2	1,5	0,1	144x144					
M10142.	EC144 150mA	90°, P2	1,5	0,15	144x144					
M10144.	EC144 250mA	90°, P2	1,5	0,25	144x144					
M10145.	EC144 300mA	90°, P2	1,5	0,3	144x144					
M10146.	EC144 400mA	90°, P2	1,5	0,4	144x144					
M10147.	EC144 500mA	90°, P2	1,5	0,5	144x144					
M10148.	EC144 600mA	90°, P2	1,5	0,6	144x144					
M14830.	CBC96 .../60mV	90°, P1	1,5		96x96					
M10212.	EC48 5A	90°, P2	1,5	5	48x48					
M10213.	EC48 10A	90°, P2	1,5	10	48x48					
M10214.	EC48 15A	90°, P2	1,5	15	48x48					
M10215.	EC48 20A	90°, P2	1,5	20	48x48					
M10216.	EC48 25A	90°, P2	1,5	25	48x48					
M10217.	EC48 30A	90°, P2	1,5	30	48x48					
M10218.	EC48 40A	90°, P2	1,5	40	48x48					
M10219.	EC48 50A	90°, P2	1,5	50	48x48					
M1021A.	EC48 60A	90°, P2	1,5	60	48x48					
M10210.	EC48 .../5A	90°, P2	1,5	.../5 A	48x48					
M10222.	EC72 5A	90°, P2	1,5	5	72x72					
M10223.	EC72 10A	90°, P2	1,5	10	72x72					
M10224.	EC72 15A	90°, P2	1,5	15	72x72					
M10225.	EC72 20A	90°, P2	1,5	20	72x72					
M10226.	EC72 25A	90°, P2	1,5	25	72x72					
M10227.	EC72 30A	90°, P2	1,5	30	72x72					
M10228.	EC72 40A	90°, P2	1,5	40	72x72					
M10229.	EC72 50A	90°, P2	1,5	50	72x72					
M1022A.	EC72 60A	90°, P2	1,5	60	72x72					
M1022B.	EC72 75A	90°, P2	1,5	75	72x72					
M1022C.	EC72 100A	90°, P2	1,5	100	72x72					
M10220.	EC72 .../5A	90°, P2	1,5	.../5 A	72x72					
M10232.	EC96 5A	90°, P2	1,5	5	96x96					
M10233.	EC96 10A	90°, P2	1,5	10	96x96					
M10234.	EC96 15A	90°, P2	1,5	15	96x96					
M10235.	EC96 20A	90°, P2	1,5	20	96x96					
M10236.	EC96 25A	90°, P2	1,5	25	96x96					
M10237.	EC96 30A	90°, P2	1,5	30	96x96					



CBC96 .../60mV

Code: M14830.

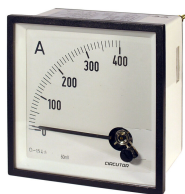
CODE	TYPE	Scale	Accuracy	Measurement Range (A)	Modules	Device	Full scale	Measure	Frequency (Hz)	Description
M10238.	EC96 40A	90°, P2	1,5	40	96x96					
M10239.	EC96 50A	90°, P2	1,5	50	96x96					
M1023A.	EC96 60A	90°, P2	1,5	60	96x96					
M1023B.	EC96 75A	90°, P2	1,5	75	96x96					
M1023C.	EC96 100A	90°, P2	1,5	100	96x96					
M10230.	EC96 .../5A	90°, P2	1,5	.../5 A	96x96					
M10242.	EC144 5A	90°, P2	1,5	5	144x144					
M10243.	EC144 10A	90°, P2	1,5	10	144x144					
M10244.	EC144 15A	90°, P2	1,5	15	144x144					
M10245.	EC144 20A	90°, P2	1,5	20	144x144					
M10246.	EC144 25A	90°, P2	1,5	25	144x144					
M10247.	EC144 30A	90°, P2	1,5	30	144x144					
M10248.	EC144 40A	90°, P2	1,5	40	144x144					
M10249.	EC144 50A	90°, P2	1,5	50	144x144					
M1024A.	EC144 60A	90°, P2	1,5	60	144x144					
M1024B.	EC144 75A	90°, P2	1,5	75	144x144					
M1024C.	EC144 100A	90°, P2	1,5	100	144x144					
M10240.	EC144 .../5A	90°, P2	1,5	.../5 A	144x144					
M10262.	EMSC45 5A	90°, P2	1,5	5						
M10263.	EMSC45 10A	90°, P2	1,5	10						
M10264.	EMSC45 15A	90°, P2	1,5	15						
M10265.	EMSC45 20A	90°, P2	1,5	20						
M10266.	EMSC45 25A	90°, P2	1,5	25						
M10267.	EMSC45 30A	90°, P2	1,5	30						
M10268.	EMSC45 40A	90°, P2	1,5	40						
M10269.	EMSC45 50A	90°, P2	1,5	50						
M1026A.	EMSC45 60A	90°, P2	1,5	60						
M10260.	EMSC45 ... /5A	90°, P2	1,5	.../5 A						
M10161.	EMSC45 100mA	90°, P2	1,5	0,1						
M10162.	EMSC45 150mA	90°, P2	1,5	0,15						
M10164.	EMSC45 250mA	90°, P2	1,5	0,25						
M10165.	EMSC45 300mA	90°, P2	1,5	0,3						
M10166.	EMSC45 400mA	90°, P2	1,5	0,4						
M10167.	EMSC45 500mA	90°, P2	1,5	0,5						
M10168.	EMSC45 600mA	90°, P2	1,5	0,6						
M10521.	EC72 FA .../5 A	90°, P2	1,5	.../5 A	72x72					
M10531.	EC96 FA .../5 A	90°, P2	1,5	.../5 A	96x96					
M14841.	CBC96 150V	90°, P1	1,5		96x96					
M14842.	CBC96 250V	90°, P1	1,5		96x96					
M14843.	CBC96 300V	90°, P1	1,5		96x96					
M14844.	CBC96 400V	90°, P1	1,5		96x96					
M14845.	CBC96 500V	90°, P1	1,5		96x96					
M14846.	CBC96 600V	90°, P1	1,5		96x96					
M10920.	EZC72 .../5A	240°, P2	5	.../5 A	72x72					
M10930.	EZC96 .../5A	240°, P2	5	.../5 A	96x96					
M10415.	EC48 250V	90°, P1	1,5		48x48					
M10416.	EC48 300V	90°, P1	1,5		48x48					
M10417.	EC48 400V	90°, P1	1,5		48x48					
M10418.	EC48 500V	90°, P1	1,5		48x48					



CBC96 .../60mV

Code: M14830.

CODE	TYPE	Scale	Accuracy	Measurement Range (A)	Modules	Device	Full scale	Measure	Frequency (Hz)	Description
M10419.	EC48 600V	90°, P1	1,5		48x48					
M10410.	EC48 .../110V	90°, P1	1,5		48x48					
M10425.	EC72 250V	90°, P1	1,5		72x72					
M10426.	EC72 300V	90°, P1	1,5		72x72					
M10427.	EC72 400V	90°, P1	1,5		72x72					
M10428.	EC72 500V	90°, P1	1,5		72x72					
M10429.	EC72 600V	90°, P1	1,5		72x72					
M10420.	EC72 .../110V	90°, P1	1,5		72x72					
M10449.	EC144 600V	90°, P1	1,5		72x72					
M10435.	EC96 250V	90°, P1	1,5		96x96					
M10436.	EC96 300V	90°, P1	1,5		96x96					
M10437.	EC96 400V	90°, P1	1,5		96x96					
M10438.	EC96 500V	90°, P1	1,5		96x96					
M10439.	EC96 600V	90°, P1	1,5		96x96					
M10430.	EC96 .../110V	90°, P1	1,5		96x96					
M10445.	EC144 250V	90°, P1	1,5		144x144					
M10446.	EC144 300V	90°, P1	1,5		144x144					
M10447.	EC144 400V	90°, P1	1,5		144x144					
M10448.	EC144 500V	90°, P1	1,5		144x144					
M10440.	EC144 .../110V	90°, P1	1,5		144x144					
M10476.	EMSC45 300V	90° P1	1,5							
M10478.	EMSC45 500V	90° P1	1,5							
M10470.	EMSC45 .../110V	90° P1	1,5							
Three-phase 3 wire										
M10625.	EC72 FIII 250V	90°, P1	1,5		72x72					
M10626.	EC72 FIII 300V	90°, P1	1,5		72x72					
M10627.	EC72 FIII 400V	90°, P1	1,5		72x72					
M10628.	EC72 FIII 500V	90°, P1	1,5		72x72					
M10629.	EC72 FIII 600V	90°, P1	1,5		72x72					
M10632.	EC96 FIII .../110V	90°, P1	1,5		72x72					
M10635.	EC96 FIII 250V	90°, P1	1,5		96x96					
M10636.	EC96 FIII 300V	90°, P1	1,5		96x96					
M10637.	EC96 FIII 400V	90°, P1	1,5		96x96					
M10638.	EC96 FIII 500V	90°, P1	1,5		96x96					
M10639.	EC96 FIII 600V	90°, P1	1,5		96x96					
Three-phase 4 wire										
M10725.	EC72 F III+N 250V	90°, P1	1,5		72x72					
M10726.	EC72 F III+N 300V	90°, P1	1,5		72x72					
M10727.	EC72 F III+N 400V	90°, P1	1,5		72x72					
M10728.	EC72 F III+N 500V	90°, P1	1,5		72x72					
M10729.	EC72 F III+N 600V	90°, P1	1,5		72x72					
M10735.	EC96 F III+N 250V	90°, P1	1,5		96x96					
M10736.	EC96 F III+N 300V	90°, P1	1,5		96x96					
M10737.	EC96 F III+N 400V	90°, P1	1,5		96x96					
M10738.	EC96 F III+N 500V	90°, P1	1,5		96x96					
M10739.	EC96 F III+N 600V	90°, P1	1,5		96x96					
With sequence meter										
M11038.	EC96 FN-S 500V	90°, P1	1,5		96x96					
M11125.	EZC72 250V	240°, P1	5		72x72	EZC72				



CBC96 .../60mV

Code: M14830.

CODE	TYPE	Scale	Accuracy	Measurement Range (A)	Modules	Device	Full scale	Measure	Frequency (Hz)	Description
M11128.	EZC72 500V	240°, P1	5		72x72	EZC72				
M11135.	EZC96 250V	240°, P1	5		96x96	EZC96				
M11138.	EZC96 500V	240°, P1	5		96x96	EZC96				
M11412.	BC48 5A	90°, P1	1,5	5	48x48	BC48				
M11413.	BC48 10A	90°, P1	1,5	10	48x48	BC48				
M11416.	BC48 25A	90°, P1	1,5	25	48x48	BC48				
M11419.	BC48 50A	90°, P1	1,5	50	48x48	BC48				
M11410.	BC48 .../60mV	90°, P1	1,5	.../60mV	48x48	BC48				
M11422.	BC72 5A	90°, P1	1,5	5	72x72	BC72				
M11423.	BC72 10A	90°, P1	1,5	10	72x72	BC72				
M11426.	BC72 25A	90°, P1	1,5	25	72x72	BC72				
M11429.	BC72 50A	90°, P1	1,5	50	72x72	BC72				
M1142A.	BC72 60A	90°, P1	1,5	60	72x72	BC72				
M11420.	BC72 .../60mV	90°, P1	1,5	.../60mV	72x72	BC72				
M11432.	BC96 5A	90°, P1	1,5	5	96x96	BC96				
M11433.	BC96 10A	90°, P1	1,5	10	96x96	BC96				
M11436.	BC96 25A	90°, P1	1,5	25	96x96	BC96				
M11439.	BC96 50A	90°, P1	1,5	50	96x96	BC96				
M1143A.	BC96 60A	90°, P1	1,5	60	96x96	BC96				
M11430.	BC96 .../60mV	90°, P1	1,5	.../60mV	96x96	BC96				
M11442.	BC144 5A	90°, P1	1,5	5	144x144	BC144				
M11443.	BC144 10A	90°, P1	1,5	10	144x144	BC144				
M11446.	BC144 25A	90°, P1	1,5	25	144x144	BC144				
M11449.	BC144 50A	90°, P1	1,5	50	144x144	BC144				
M1144A.	BC144 60A	90°, P1	1,5	60	144x144	BC144				
M11440.	BC144 .../60mV	90°, P1	1,5	.../60mV	144x144	BC144				
M11462.	BMSC45 5A	90°, P1	1,5	5		BMSC45				
M11463.	BMSC45 10A	90°, P1	1,5	10		BMSC45				
M11466.	BMSC45 25A	90°, P1	1,5	25		BMSC45				
M11460.	BMSC45 .../60mV	90°, P1	1,5	.../60mV		BMSC45				
M11711.	BC48 1V	90°, P1	1,5		48x48	BC48				
M11714.	BC48 15V	90°, P1	1,5		48x48	BC48				
M11716.	BC48 30V	90°, P1	1,5		48x48	BC48				
M11718.	BC48 60V	90°, P1	1,5		48x48	BC48				
M11719.	BC48 100V	90°, P1	1,5		48x48	BC48				
M1171A.	BC48 150V	90°, P1	1,5		48x48	BC48				
M1171B.	BC48 250V	90°, P1	1,5		48x48	BC48				
M1171D.	BC48 400V	90°, P1	1,5		48x48	BC48				
M1171E.	BC48 500V	90°, P1	1,5		48x48	BC48				
M1171F.	BC48 600V	90°, P1	1,5		48x48	BC48				
M11721.	BC72 1V	90°, P1	1,5		72x72	BC72				
M11724.	BC72 15V	90°, P1	1,5		72x72	BC72				
M11726.	BC72 30V	90°, P1	1,5		72x72	BC72				
M11728.	BC72 60V	90°, P1	1,5		72x72	BC72				
M11729.	BC72 100V	90°, P1	1,5		72x72	BC72				
M1172A.	BC72 150V	90°, P1	1,5		72x72	BC72				
M1172B.	BC72 250V	90°, P1	1,5		72x72	BC72				
M1172D.	BC72 400V	90°, P1	1,5		72x72	BC72				
M1172E.	BC72 500V	90°, P1	1,5		72x72	BC72				



CBC96 .../60mV

Code: M14830.

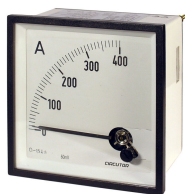
CODE	TYPE	Scale	Accuracy	Measurement Range (A)	Modules	Device	Full scale	Measure	Frequency (Hz)	Description
M1172F.	BC72 600V	90°, P1	1,5		72x72	BC72				
M11731.	BC96 1V	90°, P1	1,5		96x96	BC96				
M11734.	BC96 15V	90°, P1	1,5		96x96	BC96				
M11736.	BC96 30V	90°, P1	1,5		96x96	BC96				
M11738.	BC96 60V	90°, P1	1,5		96x96	BC96				
M11739.	BC96 100V	90°, P1	1,5		96x96	BC96				
M1173A.	BC96 150V	90°, P1	1,5		96x96	BC96				
M1173B.	BC96 250V	90°, P1	1,5		96x96	BC96				
M1173D.	BC96 400V	90°, P1	1,5		96x96	BC96				
M1173E.	BC96 500V	90°, P1	1,5		96x96	BC96				
M1173F.	BC96 600V	90°, P1	1,5		96x96	BC96				
M11741.	BC144 1V	90°, P1	1,5		144x144	BC144				
M11744.	BC144 15V	90°, P1	1,5		144x144	BC144				
M11746.	BC144 30V	90°, P1	1,5		144x144	BC144				
M11748.	BC144 60V	90°, P1	1,5		144x144	BC144				
M11749.	BC144 100V	90°, P1	1,5		144x144	BC144				
M1174A.	BC144 150V	90°, P1	1,5		144x144	BC144				
M1174B.	BC144 250V	90°, P1	1,5		144x144	BC144				
M1174D.	BC144 400V	90°, P1	1,5		144x144	BC144				
M1174E.	BC144 500V	90°, P1	1,5		144x144	BC144				
M1174F.	BC144 600V	90°, P1	1,5		144x144	BC144				
M102Z2.	SEC48 5/5 A			5/5	48x48	EC48	5/5 A			
M104Z1.	SEC48 1000 /110V				48x48	EC48	1000 /110 V			
Exchangeable Scales										
M114Z9.	SBC48 50A/60mV				48x48	BC48	50A/60 mV			
M118Z3.	SIP48 0...10V				48x48	BC48	0...10 V			
M122ZC.	SMC48 100/5 A			100/5	48x48	MC48				
M102Z3.	SEC48 10/5 A			10/5	48x48	EC48	10/5 A			
M102Z4.	SEC48 15/5 A			15/5	48x48	EC48	15/5 A			
M104Z2.	SEC48 3300 /110V				48x48	EC48	3300 /110 V			
M114ZA.	SBC48 60A/60mV				48x48	BC48	60A/60 mV			
M118Z2.	SIP48 0...20mA				48x48	BC48	0...20 mA			
M122ZF.	SMC48 200/5 A			200/5	48x48	MC48				
M102Z5.	SEC48 20/5 A			20/5	48x48	EC48	20/5 A			
M102Z6.	SEC48 25/5 A			25/5	48x48	EC48	25/5 A			
M104Z3.	SEC48 6600 /110V				48x48	EC48	6600 /110 V			
M114ZB.	SBC48 75A/60mV				48x48	BC48	75A/60 mV			
M118Z1.	SIP48 4...20mA				48x48	BC48	4...20 mA			
M122ZH.	SMC48 300/5 A			300/5	48x48	MC48				
M102Z7.	SEC48 30/5 A			30/5	48x48	EC48	30/5 A			
M102Z8.	SEC48 40/5 A			40/5	48x48	EC48	40/5 A			
M104Z4.	SEC48 13200 /110V				48x48	EC48	13200 /110 V			
M114ZC.	SBC48 100A/60mV				48x48	BC48	100A/60 mV			
M122ZJ.	SMC48 400/5 A			400/5	48x48	MC48				
M102Z9.	SEC48 50/5 A			50/5	48x48	EC48	50/5 A			
M102ZA.	SEC48 60/5 A			60/5	48x48	EC48	60/5 A			
M104Z5.	SEC48 15000 /110V				48x48	EC48	15000 /110 V			



CBC96 .../60mV

Code: M14830.

CODE	TYPE	Scale	Accuracy	Measurement Range (A)	Modules	Device	Full scale	Measure	Frequency (Hz)	Description
M114ZE.	SBC48 150A/60mV				48x48	BC48	150A/60 mV			
M122ZK.	SMC48 500/5 A			500/5	48x48	MC48				
M102ZB.	SEC48 75/5 A			75/5	48x48	EC48	75/5 A			
M102ZC.	SEC48 100/5 A			100/5	48x48	EC48	100/5 A			
M104Z6.	SEC48 20000 /110V				48x48	EC48	20000 /110 V			
M114ZF.	SBC48 200A/60mV				48x48	BC48	200A/60 mV			
M122ZL.	SMC48 600/5 A			600/5	48x48	MC48				
M102ZD.	SEC48 125/5 A			125/5	48x48	EC48	125/5 A			
M102ZE.	SEC48 150/5 A			150/5	48x48	EC48	150/5 A			
M104Z7.	SEC48 22000 /110V				48x48	EC48	22000 /110 V			
M114ZG.	SBC48 250A/60mV				48x48	BC48	250A/60 mV			
M122ZM.	SMC48 750/5 A			750/5	48x48	MC48				
M102ZF.	SEC48 200/5 A			200/5	48x48	EC48	200/5 A			
M102ZG.	SEC48 250/5 A			250/5	48x48	EC48	250/5 A			
M104Z8.	SEC48 25000 /110V				48x48	EC48	25000 /110 V			
M122ZN.	SMC48 800/5 A			800/5	48x48	MC48				
M102ZH.	SEC48 300/5 A			300/5	48x48	EC48	300/5 A			
M102ZJ.	SEC48 400/5 A			400/5	48x48	EC48	400/5 A			
M122ZP.	SMC48 1000/5 A			1000/5	48x48	MC48				
M102ZK.	SEC48 500/5 A			500/5	48x48	EC48	500/5 A			
M102ZL.	SEC48 600/5 A			600/5	48x48	EC48	600/5 A			
M122ZR.	SMC48 1500/5 A			1500/5	48x48	MC48				
M102ZM.	SEC48 750/5 A			750/5	48x48	EC48	750/5 A			
M102ZN.	SEC48 800/5 A			800/5	48x48	EC48	800/5 A			
M122ZS.	SMC48 2000/5 A			2000/5	48x48	MC48				
M102ZP.	SEC48 1000/5 A			1000/5	48x48	EC48	1000/5 A			
M102ZQ.	SEC48 1200/5 A			1200/5	48x48	EC48	1200/5 A			
M102ZR.	SEC48 1500/5 A			1500/5	48x48	EC48	1500/5 A			
M102ZS.	SEC48 2000/5 A			2000/5	48x48	EC48	2000/5 A			
M102ZT.	SEC48 2500/5 A			2500/5	48x48	EC48	2500/5 A			
M102ZU.	SEC48 3000/5 A			3000/5	48x48	EC48	3000/5 A			
M102ZV.	SEC48 4000/5 A			4000/5	48x48	EC48	4000/5 A			
M102ZW.	SEC48 5000/5 A			5000/5	48x48	EC48	5000/5 A			
M114ZH.	SBC48 300A/60mV				48x48	BC48	300A/60 mV			
M114ZJ.	SBC48 400A/60mV				48x48	BC48	400A/60mV			
M114ZL.	SBC48 600A/60mV				48x48	BC48	600A/60 mV			
M114ZP.	SBC48 1000A/60mV				48x48	BC48	1000A/60 mV			
M114ZR.	SBC48 1500A/60mV				48x48	BC48	1500A/60 mV			
M114ZT.	SBC48 2500A/60mV				48x48	BC48	2500A/60 mV			
M105Y9.	SEC72 FA 50/5 A				72x72	EC72 FA	50/5 A			
M105YA.	SEC72 FA 60/5 A				72x72	EC72 FA	60/5 A			
M105YB.	SEC72 FA 75/5 A				72x72	EC72 FA	75/5 A			



CBC96 .../60mV

Code: M14830.

CODE	TYPE	Scale	Accuracy	Measurement Range (A)	Modules	Device	Full scale	Measure	Frequency (Hz)	Description
M105YC.	SEC72 FA 100/5 A				72x72	EC72 FA	100/5 A			
M105YD.	SEC72 FA 125/5 A				72x72	EC72 FA	125/5 A			
M105YE.	SEC72 FA 150/5 A				72x72	EC72 FA	150/5 A			
M105YF.	SEC72 FA 200/5 A				72x72	EC72 FA	200/5 A			
M105YG.	SEC72 FA 250/5 A				72x72	EC72 FA	250/5 A			
M105YH.	SEC72 FA 300/5 A				72x72	EC72 FA	300/5 A			
M105YJ.	SEC72 FA 400/5 A				72x72	EC72 FA	400/5 A			
M105YK.	SEC72 FA 500/5 A				72x72	EC72 FA	500/5 A			
M105YL.	SEC72 FA 600/5 A				72x72	EC72 FA	600/5 A			
M105YM.	SEC72 FA 750/5 A				72x72	EC72 FA	750/5 A			
M105YN.	SEC72 FA 800/5 A				72x72	EC72 FA	800/5 A			
M105YP.	SEC72 FA 1000/5 A				72x72	EC72 FA	1000/5 A			
M105YQ.	SEC72 FA 1200/5 A				72x72	EC72 FA	1200/5 A			
M105YR.	SEC72 FA 1500/5 A				72x72	EC72 FA	1500/5 A			
M105YS.	SEC72 FA 2000/5 A				72x72	EC72 FA	2000/5 A			
M105YT.	SEC72 FA 2500/5 A				72x72	EC72 FA	2500/5 A			
M105YU.	SEC72 FA 3000/5 A				72x72	EC72 FA	3000/5 A			
M105YV.	SEC72 FA 4000/5 A				72x72	EC72 FA	4000/5 A			
M105YW.	SEC72 FA 5000/5 A				72x72	EC72 FA	5000/5 A			
M118Y3.	SIP72 0...10V				72x72	BC72	0...10 V			
M118Y2.	SIP72 0...20mA				72x72	BC72	0...20 mA			
M118Y1.	SIP72 4...20mA				72x72	BC72	4...20 mA			
M114Y9.	SBC72 50A/60mV				72x72	BC72	50A/60 mV			
M104Y1.	SEC72 1000 /110V				72x72	EC72	1000 /110 V			
M114YA.	SBC72 60A/60mV				72x72	BC72	60A/60 mV			
M104Y2.	SEC72 3300 /110V				72x72	EC72	3300 /110 V			
M114YB.	SBC72 75A/60mV				72x72	BC72	75A/60 mV			
M104Y3.	SEC72 6600 /110V				72x72	EC72	6600 /110 V			
M114YC.	SBC72 100A/60mV				72x72	BC72	100A/60 mV			
M104Y4.	SEC72 13200 /110V				72x72	EC72	13200 /110 V			
M114YE.	SBC72 150A/60mV				72x72	BC72	150A/60 mV			
M122YC.	SMC72 100/5 A			100/5	72x72	MC72				
M104Y5.	SEC72 15000 /110V				72x72	EC72	15000 /110 V			
M114YF.	SBC72 200A/60mV				72x72	BC72	200A/60 mV			
M122YF.	SMC72 200/5 A			200/5	72x72	MC72				
M104Y6.	SEC72 20000 /110V				72x72	EC72	20000 /110 V			
M114YG.	SBC72 250A/60mV				72x72	BC72	250A/60 mV			
M122YH.	SMC72 300/5 A			300/5	72x72	MC72				
M104Y7.	SEC72 22000 /110V				72x72	EC72	22000 /110 V			
M122YJ.	SMC72 400/5 A			400/5	72x72	MC72				
M102Y2.	SEC72 5/5 A			5/5	72x72	EC72	5/5 A			
M102Y3.	SEC72 10/5 A			10/5	72x72	EC72	10/5 A			
M104Y8.	SEC72 25000 /110V				72x72	EC72	25000 /110 V			
M122YK.	SMC72 500/5 A			500/5	72x72	MC72				



CBC96 .../60mV

Code: M14830.

CODE	TYPE	Scale	Accuracy	Measurement Range (A)	Modules	Device	Full scale	Measure	Frequency (Hz)	Description
M102Y4.	SEC72 15/5 A			15/5	72x72	EC72	15/5 A			
M102Y5.	SEC72 20/5 A			20/5	72x72	EC72	20/5 A			
M122YL.	SMC72 600/5 A			600/5	72x72	MC72				
M102Y6.	SEC72 25/5 A			25/5	72x72	EC72	25/5 A			
M102Y7.	SEC72 30/5 A			30/5	72x72	EC72	30/5 A			
M122YM.	SMC72 750/5 A			750/5	72x72	MC72				
M102Y8.	SEC72 40/5 A			40/5	72x72	EC72	40/5 A			
M102Y9.	SEC72 50/5 A			50/5	72x72	EC72	50/5 A			
M122YN.	SMC72 800/5 A			800/5	72x72	MC72				
M102YA.	SEC72 60/5 A			60/5	72x72	EC72	60/5 A			
M102YB.	SEC72 75/5 A			75/5	72x72	EC72	75/5 A			
M122YP.	SMC72 1000/5 A			1000/5	72x72	MC72				
M102YC.	SEC72 100/5 A			100/5	72x72	EC72	100/5 A			
M102YD.	SEC72 125/5 A			125/5	72x72	EC72	125/5 A			
M122YR.	SMC72 1500/5 A			1500/5	72x72	MC72				
M102YE.	SEC72 150/5 A			150/5	72x72	EC72	150/5 A			
M102YF.	SEC72 200/5 A			200/5	72x72	EC72	200/5 A			
M122YS.	SMC72 2000/5 A			2000/5	72x72	MC72				
M102YG.	SEC72 250/5 A			250/5	72x72	EC72	250/5 A			
M102YH.	SEC72 300/5 A			300/5	72x72	EC72	300/5 A			
M102YJ.	SEC72 400/5 A			400/5	72x72	EC72	400/5 A			
M102YK.	SEC72 500/5 A			500/5	72x72	EC72	500/5 A			
M102YL.	SEC72 600/5 A			600/5	72x72	EC72	600/5 A			
M102YM.	SEC72 750/5 A			750/5	72x72	EC72	750/5 A			
M102YN.	SEC72 800/5 A			800/5	72x72	EC72	800/5 A			
M102YP.	SEC72 1000/5 A			1000/5	72x72	EC72	1000/5 A			
M102YQ.	SEC72 1200/5 A			1200/5	72x72	EC72	1200/5 A			
M102YR.	SEC72 1500/5 A			1500/5	72x72	EC72	1500/5 A			
M102YS.	SEC72 2000/5 A			2000/5	72x72	EC72	2000/5 A			
M102YT.	SEC72 2500/5 A			2500/5	72x72	EC72	2500/5 A			
M102YU.	SEC72 3000/5 A			3000/5	72x72	EC72	3000/5 A			
M102YV.	SEC72 4000/5 A			4000/5	72x72	EC72	4000/5 A			
M102YW.	SEC72 5000/5 A			5000/5	72x72	EC72	5000/5 A			
M114YH.	SBC72 300A/60mV				72x72	BC72	300A/60 mV			
M114YJ.	SBC72 400A/60mV				72x72	BC72	400A/60mV			
M114YL.	SBC72 600A/60mV				72x72	BC72	600A/60 mV			
M114YP.	SBC72 1000A/60mV				72x72	BC72	1000A/60 mV			
M114YR.	SBC72 1500A/60mV				72x72	BC72	1500A/60 mV			
M114YT.	SBC72 2500A/60mV				72x72	BC72	2500A/60 mV			
M105X9.	SEC96 FA 50/5 A				96x96	EC96 FA	50/5 A			
M105XA.	SEC96 FA 60/5 A				96x96	EC96 FA	60/5 A			
M105XB.	SEC96 FA 75/5 A				96x96	EC96 FA	75/5 A			
M105XC.	SEC96 FA 100/5 A				96x96	EC96 FA	100/5 A			
M105XD.	SEC96 FA 125/5 A				96x96	EC96 FA	125/5 A			
M105XE.	SEC96 FA 150/5 A				96x96	EC96 FA	150/5 A			
M105XF.	SEC96 FA 200/5 A				96x96	EC96 FA	200/5 A			



CBC96 .../60mV

Code: M14830.

CODE	TYPE	Scale	Accuracy	Measurement Range (A)	Modules	Device	Full scale	Measure	Frequency (Hz)	Description
M105XG.	SEC96 FA 250/5 A				96x96	EC96 FA	250/5 A			
M105XH.	SEC96 FA 300/5 A				96x96	EC96 FA	300/5 A			
M105XJ.	SEC96 FA 400/5 A				96x96	EC96 FA	400/5 A			
M105XK.	SEC96 FA 500/5 A				96x96	EC96 FA	500/5 A			
M105XL.	SEC96 FA 600/5 A				96x96	EC96 FA	600/5 A			
M105XM.	SEC96 FA 750/5 A				96x96	EC96 FA	750/5 A			
M105XN.	SEC96 FA 800/5 A				96x96	EC96 FA	800/5 A			
M105XP.	SEC96 FA 1000/5 A				96x96	EC96 FA	1000/5 A			
M105XQ.	SEC96 FA 1200/5 A				96x96	EC96 FA	1200/5 A			
M105XR.	SEC96 FA 1500/5 A				96x96	EC96 FA	1500/5 A			
M105XS.	SEC96 FA 2000/5 A				96x96	EC96 FA	2000/5 A			
M105XT.	SEC96 FA 2500/5 A				96x96	EC96 FA	2500/5 A			
M105XU.	SEC96 FA 3000/5 A				96x96	EC96 FA	3000/5 A			
M105XV.	SEC96 FA 4000/5 A				96x96	EC96 FA	4000/5 A			
M105XW.	SEC96 FA 5000/5 A				96x96	EC96 FA	5000/5 A			
M118X3.	SIP96 0...10V				96x96	BC96	0...10 V			
M118X2.	SIP96 0...20mA				96x96	BC96	0...20 mA			
M118X1.	SIP96 4...20mA				96x96	BC96	4...20 mA			
M114X9.	SBC96 50A/60mV				96x96	BC96	50A/60 mV			
M114XA.	SBC96 60A/60mV				96x96	BC96	60A/60 mV			
M104X1.	SEC96 1000 /110V				96x96	EC96	1000 /110 V			
M114XB.	SBC96 75A/60mV				96x96	BC96	75A/60 mV			
M104X2.	SEC96 3300 /110V				96x96	EC96	3300 /110 V			
M114XC.	SBC96 100A/60mV				96x96	BC96	100A/60 mV			
M104X3.	SEC96 6600 /110V				96x96	EC96	6600 /110 V			
M114XE.	SBC96 150A/60mV				96x96	BC96	150A/60 mV			
M104X4.	SEC96 13200 /110V				96x96	EC96	13200 /110 V			
M114XF.	SBC96 200A/60mV				96x96	BC96	200A/60 mV			
M104X5.	SEC96 15000 /110V				96x96	EC96	15000 /110 V			
M114XG.	SBC96 250A/60mV				96x96	BC96	250A/60 mV			
M104X6.	SEC96 20000 /110V				96x96	EC96	20000 /110 V			
M104X7.	SEC96 22000 /110V				96x96	EC96	22000 /110 V			
M122XC.	SMC96 100/5 A			100/5	96x96	MC96				
M104X8.	SEC96 25000 /110V				96x96	EC96	25000 /110 V			
M122XF.	SMC96 200/5 A			200/5	96x96	MC96				
M122XH.	SMC96 300/5 A			300/5	96x96	MC96				
M122XJ.	SMC96 400/5 A			400/5	96x96	MC96				
M122XK.	SMC96 500/5 A			500/5	96x96	MC96				
M122XL.	SMC96 600/5 A			600/5	96x96	MC96				
M122XM.	SMC96 750/5 A			750/5	96x96	MC96				
M102X2.	SEC96 5/5 A			5/5	96x96	EC96	5/5 A			
M122XN.	SMC96 800/5 A			800/5	96x96	MC96				
M102X3.	SEC96 10/5 A			10/5	96x96	EC96	10/5 A			
M102X4.	SEC96 15/5 A			15/5	96x96	EC96	15/5 A			



CBC96 .../60mV

Code: M14830.

CODE	TYPE	Scale	Accuracy	Measurement Range (A)	Modules	Device	Full scale	Measure	Frequency (Hz)	Description
M122XP.	SMC96 1000/5 A			1000/5	96x96	MC96				
M102X5.	SEC96 20/5 A			20/5	96x96	EC96	20/5 A			
M102X6.	SEC96 25/5 A			25/5	96x96	EC96	25/5 A			
M122XR.	SMC96 1500/5 A			1500/5	96x96	MC96				
M102X7.	SEC96 30/5 A			30/5	96x96	EC96	30/5 A			
M102X8.	SEC96 40/5 A			40/5	96x96	EC96	40/5 A			
M122XS.	SMC96 2000/5 A			2000/5	96x96	MC96				
M102X9.	SEC96 50/5 A			50/5	96x96	EC96	50/5 A			
M102XA.	SEC96 60/5 A			60/5	96x96	EC96	60/5 A			
M102XB.	SEC96 75/5 A			75/5	96x96	EC96	75/5 A			
M102XC.	SEC96 100/5 A			100/5	96x96	EC96	100/5 A			
M102XD.	SEC96 125/5 A			125/5	96x96	EC96	125/5 A			
M102XE.	SEC96 150/5 A			150/5	96x96	EC96	150/5 A			
M102XF.	SEC96 200/5 A			200/5	96x96	EC96	200/5 A			
M102XG.	SEC96 250/5 A			250/5	96x96	EC96	250/5 A			
M102XH.	SEC96 300/5 A			300/5	96x96	EC96	300/5 A			
M102XJ.	SEC96 400/5 A			400/5	96x96	EC96	400/5 A			
M102XK.	SEC96 500/5 A			500/5	96x96	EC96	500/5 A			
M102XL.	SEC96 600/5 A			600/5	96x96	EC96	600/5 A			
M102XM.	SEC96 750/5 A			750/5	96x96	EC96	750/5 A			
M102XN.	SEC96 800/5 A			800/5	96x96	EC96	800/5 A			
M102XP.	SEC96 1000/5 A			1000/5	96x96	EC96	1000/5 A			
M102XQ.	SEC96 1200/5 A			1200/5	96x96	EC96	1200/5 A			
M114XH.	SBC96 300A/60mV				96x96	BC96	300A/60 mV			
M102XR.	SEC96 1500/5 A			1500/5	96x96	EC96	1500/5 A			
M102XS.	SEC96 2000/5 A			2000/5	96x96	EC96	2000/5 A			
M114XJ.	SBC96 400A/60mV				96x96	BC96	400A/60mV			
M102XT.	SEC96 2500/5 A			2500/5	96x96	EC96	2500/5 A			
M102XU.	SEC96 3000/5 A			3000/5	96x96	EC96	3000/5 A			
M114XL.	SBC96 600A/60mV				96x96	BC96	600A/60 mV			
M102XV.	SEC96 4000/5 A			4000/5	96x96	EC96	4000/5 A			
M102XW.	SEC96 5000/5 A			5000/5	96x96	EC96	5000/5 A			
M114XP.	SBC96 1000A/60mV				96x96	BC96	1000A/60 mV			
M114XR.	SBC96 1500A/60mV				96x96	BC96	1500A/60 mV			
M114XT.	SBC96 2500A/60mV				96x96	BC96	2500A/60 mV			
M118U3.	SIPMSC45 0...10V					BMSC45	0...10 V			
M118U2.	SIPMSC45 0...20mA					BMSC45	0...20 mA			
M118U1.	SIPMSC45 4...20mA					BMSC45	4...20 mA			
M114U9.	SBMSC45 50A/60mV					BMSC45	50A/60 mV			
M114UA.	SBMSC45 60A/60mV					BMSC45	60A/60 mV			
M114UB.	SBMSC45 75A/60mV					BMSC45	75A/60 mV			
M104U1.	SEMSC45 1000 /110V					EMSC45	1000 /110 V			
M114UC.	SBMSC45 100A/60mV					BMSC45	100A/60 mV			
M104U2.	SEMSC45 3300 /110V					EMSC45	3300 /110 V			
M114UE.	SBMSC45 150A/60mV					BMSC45	150A/60 mV			



CBC96 .../60mV

Code: M14830.

CODE	TYPE	Scale	Accuracy	Measurement Range (A)	Modules	Device	Full scale	Measure	Frequency (Hz)	Description
M104U3.	SEMSC45 6600 /110V					EMSC45	6600 /110 V			
M114UF.	SBMSC45 200A/60mV					BMSC45	200A/60 mV			
M104U4.	SEMSC45 13200 /110V					EMSC45	13200 /110 V			
M114UG.	SBMSC45 250A/60mV					BMSC45	250A/60 mV			
M104U5.	SEMSC45 15000 /110V					EMSC45	15000 /110 V			
M104U6.	SEMSC45 20000 /110V					EMSC45	20000 /110 V			
M104U7.	SEMSC45 22000 /110V					EMSC45	22000 /110 V			
M104U8.	SEMSC45 25000 /110V					EMSC45	25000 /110 V			
M102U9.	SEMSC45 50/5 A			50/5		EMSC45	50/5 A			
M102UA.	SEMSC45 60/5 A			60/5		EMSC45	60/5 A			
M102UB.	SEMSC45 75/5 A			75/5		EMSC45	75/5 A			
M102UC.	SEMSC45 100/5 A			100/5		EMSC45	100/5 A			
M102UD.	SEMSC45 125/5 A			125/5		EMSC45	125/5 A			
M102UE.	SEMSC45 150/5 A			150/5		EMSC45	150/5 A			
M114UH.	SBMSC45 300A/60mV					BMSC45	300A/60 mV			
M102UF.	SEMSC45 200/5 A			200/5		EMSC45	200/5 A			
M102UG.	SEMSC45 250/5 A			250/5		EMSC45	250/5 A			
M114UJ.	SBMSC45 400A/60mV					BMSC45	400A/60mV			
M102UH.	SEMSC45 300/5 A			300/5		EMSC45	300/5 A			
M102UJ.	SEMSC45 400/5 A			400/5		EMSC45	400/5 A			
M114UL.	SBMSC45 600A/60mV					BMSC45	600A/60 mV			
M102UK.	SEMSC45 500/5 A			500/5		EMSC45	500/5 A			
M102UL.	SEMSC45 600/5 A			600/5		EMSC45	600/5 A			
M114UP.	SBMSC45 1000A/60mV					BMSC45	1000A/60 mV			
M102UM.	SEMSC45 750/5 A			750/5		EMSC45	750/5 A			
M102UN.	SEMSC45 800/5 A			800/5		EMSC45	800/5 A			
M114UR.	SBMSC45 1500A/60mV					BMSC45	1500A/60 mV			
M102UP.	SEMSC45 1000/5 A			1000/5		EMSC45	1000/5 A			
M102UQ.	SEMSC45 1200/5 A			1200/5		EMSC45	1200/5 A			
M114UT.	SBMSC45 2500A/60mV					BMSC45	2500A/60 mV			
M102UR.	SEMSC45 1500/5 A			1500/5		EMSC45	1500/5 A			
M102US.	SEMSC45 2000/5 A			2000/5		EMSC45	2000/5 A			
M102UT.	SEMSC45 2500/5 A			2500/5		EMSC45	2500/5 A			
M102UU.	SEMSC45 3000/5 A			3000/5		EMSC45	3000/5 A			
M102UV.	SEMSC45 4000/5 A			4000/5		EMSC45	4000/5 A			
M102UW.	SEMSC45 5000/5 A			5000/5		EMSC45	5000/5 A			
M11764.	BMSC45 15V	90° , P1	1,5			BMSC45				
M11765.	BMSC45 30V	90° , P1	1,5			BMSC45				
M11766.	BMSC45 60V	90° , P1	1,5			BMSC45				
M11767.	BMSC45 100V	90° , P1	1,5			BMSC45				
M11768.	BMSC45 150V	90° , P1	1,5			BMSC45				
M1176F.	BMSC45 600V	90° , P1	1,5			BMSC45				



CBC96 .../60mV

Code: M14830.

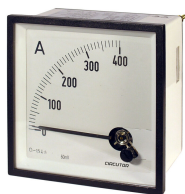
CODE	TYPE	Scale	Accuracy	Measurement Range (A)	Modules	Device	Full scale	Measure	Frequency (Hz)	Description
M11813.	BC48 0...10V	90°, P1	1,5		48x48	BC48	0...10 V			
M11812.	BC48 0...20mA	90°, P1	1,5		48x48	BC48	0...20 mA			
M11811.	BC48 4...20mA	90°, P1	1,5		48x48	BC48	4...20 mA			
M11823.	BC72 0...10V	90°, P1	1,5		72x72	BC72	0...10 V			
M11822.	BC72 0...20mA	90°, P1	1,5		72x72	BC72	0...20 mA			
M11821.	BC72 4...20mA	90°, P1	1,5		72x72	BC72	4...20 mA			
M11833.	BC96 0...10V	90°, P1	1,5		96x96		0...10 V			
M11832.	BC96 0...20mA	90°, P1	1,5		96x96	BC96	0...20 mA			
M11831.	BC96 4...20mA	90°, P1	1,5		96x96	BC96	4...20 mA			
M11843.	BC144 0...10V	90°, P1	1,5		144x144		0...10 V			
M11842.	BC144 0...20mA	90°, P1	1,5		144x144		0...20 mA			
M11841.	BC144 4...20mA	90°, P1	1,5		144x144		4...20 mA			
M11863.	BMSC45 0...10V	90°, P1	1,5				0...10 V			
M11862.	BMSC45 0...20mA	90°, P1	1,5				0...20 mA			
M11861.	BMSC45 4...20mA	90°, P1	1,5				4...20 mA			
M126YC.	SEMC72 100 /5A			100/5	72x72	EMC72				
M126YF.	SEMC72 200 /5A			200/5	72x72	EMC72				
M126YH.	SEMC72 300 /5A			300/5	72x72	EMC72				
M126YJ.	SEMC72 400 /5A			400/5	72x72	EMC72				
M126YK.	SEMC72 500 /5A			500/5	72x72	EMC72				
M126YL.	SEMC72 600 /5A			600/5	72x72	EMC72				
M126YM.	SEMC72 750 /5A			750/5	72x72	EMC72				
M126YN.	SEMC72 800 /5A			800/5	72x72	EMC72				
M126YP.	SEMC72 1000 /5A			1000/5	72x72	EMC72				
M126YR.	SEMC72 1500 /5A			1500/5	72x72	EMC72				
M126YS.	SEMC72 2000 /5A			2000/5	72x72	EMC72				
M126XC.	SEMC96 100 /5A			100/5	96x96	EMC96				
M126XF.	SEMC96 200 /5A			200/5	96x96	EMC96				
M126XH.	SEMC96 300 /5A			300/5	96x96	EMC96				
M126XJ.	SEMC96 400 /5A			400/5	96x96	EMC96				
M126XK.	SEMC96 500 /5A			500/5	96x96	EMC96				
M126XL.	SEMC96 600 /5A			600/5	96x96	EMC96				
M126XM.	SEMC96 750 /5A			750/5	96x96	EMC96				
M126XN.	SEMC96 800 /5A			800/5	96x96	EMC96				
M126XP.	SEMC96 1000 /5A			1000/5	96x96	EMC96				
M126XR.	SEMC96 1500 /5A			1500/5	96x96	EMC96				
M126XS.	SEMC96 2000 /5A			2000/5	96x96	EMC96				
M14810.	CEC96 .../5A	90°, P2	1,5		96x96		.../5 A			
M14821.	CEC96 150V	90°, P1	1,5		96x96					
M14822.	CEC96 250V	90°, P1	1,5		96x96					
M14823.	CEC96 300V	90°, P1	1,5		96x96					
M14824.	CEC96 400V	90°, P1	1,5		96x96					
M14825.	CEC96 500V	90°, P1	1,5		96x96					
M14826.	CEC96 600V	90°, P1	1,5		96x96					
M14820.	CEC96 .../110V	90°, P1	1,5		96x96		.../110 V			
M130J9.	SWM96 50/5A 20kW			50/5	96x96	WM96	20 kW			
M130JC.	SWM96 100/5A 40kW			100/5	96x96	WM96	40 kW			
M130JE.	SWM96 150/5A 60kW			150/5	96x96	WM96	60 kW			
M130JF.	SWM96 200/5A 80kW			200/5	96x96	WM96	80 kW			



CBC96 .../60mV

Code: M14830.

CODE	TYPE	Scale	Accuracy	Measurement Range (A)	Modules	Device	Full scale	Measure	Frequency (Hz)	Description
M130JH.	SWM96 300/5A 120kW			300/5	96x96	WM96	120 kW			
M130JJ.	SWM96 400/5A 160kW			400/5	96x96	WM96	160 kW			
M130JK.	SWM96 500/5A 200kW			500/5	96x96	WM96	200 kW			
M130JL.	SWM96 600/5A 240kW			600/5	96x96	WM96	240 kW			
M130JP.	SWM96 1000/5A 400kW			1000/5	96x96	WM96	400 kW			
M130JR.	SWM96 1500/5A 600kW			1500/5	96x96	WM96	600 kW			
M130JS.	SWM96 2000/5A 800kW			2000/5	96x96	WM96	800 kW			
M130JU.	SWM96 3000/5A 1,2MW			3000/5	96x96	WM96	1,2 MW			
M130JV.	SWM96 4000/5A 1,6MW			4000/5	96x96	WM96	1,6 MW			
M130JW.	SWM96 5000/5A 2MW			5000/5	96x96	WM96	2 MW			
M130K9.	SWT96E 50/5A 30kW			50/5	96x96	WT96E	30 kW			
M130KB.	SWT96E 75/5A 50kW			75/5	96x96	WT96E	50 kW			
M130KC.	SWT96E 100/5A 60kW			100/5	96x96	WT96E	60 kW			
M130KE.	SWT96E 150/5A 90kW			150/5	96x96	WT96E	90 kW			
M130KF.	SWT96E 200/5A 120kW			200/5	96x96	WT96E	120 kW			
M130KH.	SWT96E 300/5A 180kW			300/5	96x96	WT96E	180 kW			
M130KJ.	SWT96E 400/5A 240kW			400/5	96x96	WT96E	240 kW			
M130KK.	SWT96E 500/5A 300kW			500/5	96x96	WT96E	300 kW			
M130KL.	SWT96E 600/5A 360kW			600/5	96x96	WT96E	360 kW			
M130KP.	SWT96E 1000/5A 600kW			1000/5	96x96	WT96E	600 kW			
M130KR.	SWT96E 1500/5A 900kW			1500/5	96x96	WT96E	900 kW			
M130KS.	SWT96E 2000/5A 1,2MW			2000/5	96x96	WT96E	1,2 MW			
M130KU.	SWT96E 3000/5A 1,8MW			3000/5	96x96	WT96E	1,8 MW			
M130KV.	SWT96E 4000/5A 2,4MW			4000/5	96x96	WT96E	2,4 MW			
M130KW.	SWT96E 5000/5A 3MW			5000/5	96x96	WT96E	3 MW			
M130L9.	SWT96AN 50/5A 30kW			50/5	96x96	WT96AN	30 kW			
M130LB.	SWT96AN 75/5A 50kW			75/5	96x96	WT96AN	50 kW			
M130LC.	SWT96AN 100/5A 60kW			100/5	96x96	WT96AN	60 kW			
M130LE.	SWT96AN 150/5A 90kW			150/5	96x96	WT96AN	90 kW			
M130LF.	SWT96AN 200/5A 120kW			200/5	96x96	WT96AN	120 kW			
M130LH.	SWT96AN 300/5A 180kW			300/5	96x96	WT96AN	180 kW			
M130LJ.	SWT96AN 400/5A 240kW			400/5	96x96	WT96AN	240 kW			
M130LK.	SWT96AN 500/5A 300kW			500/5	96x96	WT96AN	300 kW			
M130LL.	SWT96AN 600/5A 360kW			600/5	96x96	WT96AN	360 kW			
M130LP.	SWT96AN 1000/5A 600kW			1000/5	96x96	WT96AN	600 kW			
M130LR.	SWT96AN 1500/5A 900kW			1500/5	96x96	WT96AN	900 kW			
M130LS.	SWT96AN 2000/5A 1,2MW			2000/5	96x96	WT96AN	1,2 MW			
M130LU.	SWT96AN 3000/5A 1,8MW			3000/5	96x96	WT96AN	1,8 MW			
M130LV.	SWT96AN 4000/5A 2,4MW			4000/5	96x96	WT96AN	2,4 MW			
M130LW.	SWT96AN 5000/5A 3MW			5000/5	96x96	WT96AN	3 MW			
M12523.	ZC72 0...10V	240° P1	1,5		72x72		0...10 V			
M12521.	ZC72 4...20mA	240° P1	1,5		72x72		4...20 mA			
M12520.	ZC72 .../60mV	240° P1	1,5		72x72		.../60 mV			
M12533.	ZC96 0...10V	240° P1	1,5		96x96		0...10 V			
M12531.	ZC96 4...20mA	240° P1	1,5		96x96		4...20 mA			
M12530.	ZC96 .../60mV	240° P1	1,5		96x96		...60 mV			
M12543.	ZC144 0...10V	240° P1	1,5		144x144		0...10 V			
M12541.	ZC144 4...20mA	240° P1	1,5		144x144		4...20 mA			
M12540.	ZC144 .../60mV	240° P1	1,5		144x144		.../60 mV			



CBC96 .../60mV

Code: M14830.

CODE	TYPE	Scale	Accuracy	Measurement Range (A)	Modules	Device	Full scale	Measure	Frequency (Hz)	Description
M12211.	MC48 .../5 A	90°, P1, 2	3	.../5 A	48x48					
M12221.	MC72 .../5A	90°, P1, 2	3	.../5 A	72x72					
M15521.	MC72 .../5A 120%	90°, P1, 2	3	.../5 A	72x72					
M12231.	MC96 .../5 A	90°, P1, 2	3	.../5 A	96x96					
M15531.	MC96 .../5A 120%	90°, P1, 2	3	.../5 A	96x96					
M12241.	MC144 .../5A	90°, P1, 2	3	.../5 A	144x144					
M12622.	EMC72 .../5A	Doble escala 90°, P1,2, hierro móvil P2	Bimetálico	.../5 A	72x72					
M12632.	EMC96 .../5A	Doble escala 90°, P1,2, hierro móvil P2	Bimetálico	.../5 A	96x96					
M12642.	EMC144 .../5A	Doble escala 90°, P1,2, hierro móvil P2	Bimetálico	.../5 A	144x144					
HC72										
M12721.	HC72 45-55Hz 230V	90°	0,5		72x72			45...55 Hz	45...55	
HC96										
M12731.	HC96 45-55Hz 230V	90°	0,5		96x96			45...55 Hz	45...55	
HC144										
M12741.	HC144 45-55Hz 230V	90°	0,5		144x144			45...55 Hz	45...55	
HMSC45										
M12761.	HMSC45 45-55Hz 230V	90°	0,5					45...55 Hz	45...55	
M1291100A0000	HLC48 48,5-51,5Hz 7L		0,5		48x48			48,5...51,5 Hz	48,5...51,5, 7 láminas	
M1291100B0000	HLC48 58,5-61,5Hz 7L		0,5		48x48			58,5...61,5 Hz	58,5...61,5, 7 láminas	
M1292100C0000	HLC72 47-53Hz 13L		0,5		72x72			47...53 Hz	47...53, 13 láminas	
M129210010000	HLC72 57-63Hz 13L		0,5		72x72			57...63 Hz	53...63, 13 láminas	
M1293100C0000	HLC96 47-53Hz 13L		0,5		96x96			47...53 Hz	47...53, 13 láminas	
M129310010000	HLC96 57-63Hz 13L		0,5		96x96			57...63 Hz	57...63, 13 láminas	
M129310080000	HLC96 46-54Hz 17L		0,5		96x96			46...54 Hz	46...54, 17 láminas	
M129310090000	HLC96 56-64Hz 17L		0,5		96x96			56...64 Hz	57...63, 17 láminas	
M129410060000	HLC144 45-55Hz 21L		0,5		144x144			45...55 Hz	45...55, 21 láminas	
M129410070000	HLC144 55-65Hz 21L		0,5		144x144			55...65 Hz	55...65, 21 láminas	
Single-phase										
M13031.	WMC96 400V .../5A	90° P1	1,5		96x96	WMC96		400 Vph-ph, .../5 A		
M13041.	WMC144 400V .../5A	90° P1	1,5		96x96	WMC144		400 Vph-ph, .../5 A		
Balanced three-phase										
M13032.	WTC96E 400V .../5A	90° P1	1,5		96x96	WTC96		400 Vph-ph, .../5 A		
M13042.	WTC144E 400V .../5A	90° P1	1,5		144x144	WTC144E		400 Vph-ph, .../5 A		
Three-phase 3 wire (ARON)										



CBC96 .../60mV

Code: M14830.

CODE	TYPE	Scale	Accuracy	Measurement Range (A)	Modules	Device	Full scale	Measure	Frequency (Hz)	Description
M13034.	WTC96A 110V .../5A	90° P1	1,5		96x96	WTC96A		110 Vph-ph, .../5A		
M13044.	WTC144A 110V .../5A	90° P1	1,5		144x144	WTC144A		110 Vph-ph, .../5A		
Three-phase 4 wire										
M13033.	WTC96AN 400V .../5A	90° P1	1,5		96x96	WTC96AN		400 Vph-ph, .../5 A		
M13043.	WTC144AN 400V .../5A	90° P1	1,5		144x144	WTC144AN		400 Vph-ph, .../5 A		
Single-phase										
M13431.	FEMC96 100/√3 V	90° P1	1,5		96x96					
M13432.	FEMC96 110/√3 V	90° P1	1,5		96x96					
M13433.	FEMC96 100V	90° P1	1,5		96x96					
M13434.	FEMC96 110V	90° P1	1,5		96x96					
M13435.	FEMC96 230V	90° P1	1,5		96x96					
M13436.	FEMC96 400V	90° P1	1,5		96x96					
M13437.	FEMC96 440V	90° P1	1,5		96x96					
M13438.	FEMC96 500V	90° P1	1,5		96x96					
M13441.	FEMC144 100/√3 V	90° P1	1,5		144x144					
M13442.	FEMC144 110/√3 V	90° P1	1,5		144x144					
M13443.	FEMC144 100V	90° P1	1,5		144x144					
M13444.	FEMC144 110V	90° P1	1,5		144x144					
M13445.	FEMC144 230V	90° P1	1,5		144x144					
M13446.	FEMC144 400V	90° P1	1,5		144x144					
M13447.	FEMC144 440V	90° P1	1,5		144x144					
M13448.	FEMC144 500V	90° P1	1,5		144x144					
Balanced three-phase										
M1343C.	FETC96 100V	90° P1	1,5		96x96					
M1343D.	FETC96 110V	90° P1	1,5		96x96					
M1343E.	FETC96 230V	90° P1	1,5		96x96					
M1343F.	FETC96 400V	90° P1	1,5		96x96					
M1343G.	FETC96 440V	90° P1	1,5		96x96					
M1343H.	FETC96 500V	90° P1	1,5		96x96					
M1344C.	FETC144 100V	90° P1	1,5		144x144					
M1344D.	FETC144 110V	90° P1	1,5		144x144					
M1344E.	FETC144 230V	90° P1	1,5		144x144					
M1344F.	FETC144 400V	90° P1	1,5		144x144					
M1344G.	FETC144 440V	90° P1	1,5		144x144					
M1344H.	FETC144 500V	90° P1	1,5		144x144					
Single-phase										
M14721.	PGR96M .../5A	90°, P2	1,5	.../5 A	96x96	CW-M		110/√3 ... 500 V		
Balanced three-phase										
M14722.	PGR96E .../5A	90°, P2	1,5	.../5 A	96x96	CW-TE		110 ... 500 V		
Three-phase 3 wire (ARON)										
M14724.	PGR96A .../5A	90°, P2	1,5	.../5 A	96x96	CW-TA		110 ... 500 V		
Three-phase 4 wire										
M14723.	PGR96AN .../5A	90°, P2	1,5	.../5 A	96x96	CW-TAN		110 ... 500 V		
M13831.	2EC96 2x.../100V	90°	1,5		96x96	2EC96				



CBC96 .../60mV

Code: M14830.

CODE	TYPE	Scale	Accuracy	Measurement Range (A)	Modules	Device	Full scale	Measure	Frequency (Hz)	Description
M13832.	2EC96 2x.../110V	90°	1,5		96x96	2EC96				
M13833.	2EC96 2x220V	90°	1,5		96x96	2EC96				
M13834.	2EC96 2x380V	90°	1,5		96x96	2EC96				
M13835.	2EC96 2x440V	90°	1,5		96x96	2EC96				
M13841.	2EC144 2x.../100V	90°	1,5		144x144	2EC144				
M13842.	2EC144 2x.../110V	90°	1,5		144x144	2EC144				
M13843.	2EC144 2x220V	90°	1,5		144x144	2EC144				
M13844.	2EC144 2x380V	90°	1,5		144x144	2EC144				
M13845.	2EC144 2x440V	90°	1,5		144x144	2EC144				
Pointer type, 230 V										
M12732.	2HC96 45-55Hz	90°	0,5		96x96		45...55 Hz	45...55		
M12742.	2HC144 45-55Hz	90°	0,5		144x144		45...55 Hz	45...55		
M1293200C0000	2HLC96 47-53Hz		0,5		96x96		47...53 Hz	47...53, 13 láminas		
M129320010000	2HLC96 57-63Hz		0,5		96x96		57...63 Hz	57...63, 13 láminas		
M129320080000	2HLC96 46-54Hz		0,5		96x96		46...54 Hz	46...54, 17 láminas		
M129320090000	2HLC96 56-64Hz		0,5		96x96		56...64 Hz	56...64, 17 láminas		
M129420060000	2HLC144 45-55Hz		0,5		144x144		45...55 Hz	45...55, 21 láminas		
M129420070000	2HLC144 55-65Hz		0,5		144x144		55...65 Hz	55...65, 21 láminas		
Single-phase										
M14431.	SMC96 110V		1,5		96x96	SMC96				
M14432.	SMC96 230V		1,5		96x96	SMC96				
M14433.	SMC96 400V		1,5		96x96	SMC96				
M14434.	SMC96 500V		1,5		96x96	SMC96				
M14441.	SMC144 110V		1,5		144x144	SMC144				
M14442.	SMC144 230V		1,5		144x144	SMC144				
M14443.	SMC144 400V		1,5		144x144	SMC144				
M14444.	SMC144 500V		1,5		144x144	SMC144				
Three-phase										
M14435.	STC96 110V		1,5		96x96	STC96				
M14436.	STC96 230V		1,5		96x96	STC96				
M14437.	STC96 400V		1,5		96x96	STC96				
M14438.	STC96 500V		1,5		96x96	STC96				
M14445.	STC144 110V		1,5		144x144	STC144				
M14446.	STC144 230V		1,5		144x144	STC144				
M14447.	STC144 400V		1,5		144x144	STC144				
M14448.	STC144 500V		1,5		144x144	STC144				
Power Supply 400 V										
M14624.	SYNCHROMAX 30...150V							35...80		
M14625.	SYNCHROMAX 110...600V							35...80		
M14634.	SYNCHROMAX-PID 30...150V							35...80		
M14635.	SYNCHROMAX-PID 110...600V							35...80		
M13726.	UC72 100...150V				72x72	UC72				
M13721.	UC72 150...500V				72x72	UC72				
M13736.	UC96 100 ...150V				96x96	UC96				
M13731.	UC96 150...500V				96x96	UC96				



CBC96 .../60mV

Code: M14830.

CODE	TYPE	Scale	Accuracy	Measurement Range (A)	Modules	Device	Full scale	Measure	Frequency (Hz)	Description
M13754.	CUC96 230V				96x96	CUC96				
M13755.	CUC96 400V				96x96	CUC96				
M14911.	CH48				48x48				50	
M14921.	CH72				72x72				50	
M14931.	CH96				96x96				50	
M14951.	CH45								50	
M15051.	MEG-1000	90°	1,5					0 ... 500 kΩ 0,5 ... 5 MΩ	50...60	
M1ZZ52.	Joint IP54 C48									IP 54 seal, 48 x 48
M1ZZ53.	Joint IP54 C72									IP 54 seal, 72 x 72
M1ZZ54.	Joint IP54 C96				96x96					
M1ZZ55.	Joint IP54 C144				144x144					
M19941.	FIP-C48									IP 65 rating, 48 x 48
M19942.	FIP-C72									IP 65 rating, 72 x 72
M19943.	FIP-C96				96x96					
M19944.	FIP-C144				144x144					
M19921.	Tapa cubrebornas 48x48									Terminal cover (IP 20) 48x48
M19922.	Tapa cubrebornas 72x72									Terminal cover (IP 20) 72x72
M19923.	Tapa cubrebornas 96x96									Terminal cover (IP 20) 96x96



CBC96 .../60mV

Code: M14830.

Dimensions



Connections

