



## PVM2

---

PVM2, Single canopy with integration of an RVE point on the side of the foot,

Code: EPVM20.

### Description

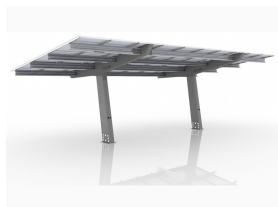
---

The PVM series consists of 2 models: PVM2 and PVM4. It is ideal for medium and large covered parking areas with photovoltaic solar production where it is important to maintain an aesthetic environment. This canopy maintains the construction characteristics of the PVS family, offering a lighter solution with a Magnelis surface finish.

### Application

---

- Electric vehicle charging with backup solar generation.
- Photovoltaic energy installations in buildings in which the roof is not suitable for the installation of conventional photovoltaic panels.
- Instantaneous self-consumption, ideal for industrial, commercial or residential buildings with outdoor parking and daytime consumption.



## PVM2

Solar canopies for instantaneous self-consumption

Code: EPVM20.

### Specifications

#### Características Base

Grado protección	C5
Material	S355J2+N – GALVANIZADO EN CALIENTE
Medidas	430 x 512 x 305 mm
Peso	40.8 kg

#### Mechanical characteristics

Size (mm) width x height x depth	5007 x 3343 x 430 (mm)
----------------------------------	------------------------

#### Características Pie

Espesor chapa	3 mm
Grado protección	C5
Material	S350GD+ZM310 - MAGNELIS
Medidas	465 x 2950 x 200 mm
Peso	104 kg
Separación pies	Protected environments: 7.5 m (3 Spaces) Open environments: 5 m (2 Spaces)

#### Características Vela

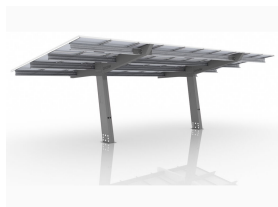
Espesor chapa	3 mm
Grado inclinación	9°
Grado protección	C5
Material	S350GD+ZM310 - MAGNELIS
Medidas	450 x 5004 x 158 mm
Peso	135 kg

#### Features / performance

Additional	Waterproofing Internal wiring RVE integration in the pillar Aesthetic impact Mounting service Power 3kWp/place
Optional	1 Recharge point per pillar Paint Option 1: Base + Pillar Option 2: Base + Pillar + Beam

#### Standards

Standards	European: Eurocode: 0, 1 and 3 Spanish: CÓDIGO TÉCNICO DE LA EDIFICACION: DB-
-----------	---



## PVM2

Solar canopies for instantaneous self-consumption

Code: EPVM20.

SE-SE, DB-SE-AE, DB-SE-A.

### PVM

Solar canopies for instant self-consumption

CODE	TYPE	Description
EPVM20.	PVM2	Single canopy with integration of an RVE point on the side of the foot
EPVH40.	PVM4	Double canopy with integration of an RVE point on the side of the foot

The PVM canopy references include the following components:

HalfCell monocrystalline modules (120)

PVM2, PVM4 type canopy structure

PV inverter/s

The PVM KITS can be additionally completed with two types of electrical panels that include both the protective devices for the DC part (StringBox) and the AC part at the inverter outlet (CombinerBox):

Protection panels and iPV-Monitor

StringBox TR (Includes TRH16 and M/TR modules for current measure)

CombinerBox PV (Includes CVM-E3-MINI analyzer and iPV-Monitor)

Environmental sensors (radiation and plate/ambient temperature)

It includes the price of the template and the RAL paint at the customer's request.

DELIVERY NOT INCLUDED



## PVM2

---

Solar canopies for instantaneous self-consumption

Code: EPVM20.

## Dimensions

---

