

CI-5

CI-5, Structures for inclined roof

Code: EEI215.

- > Módulos: 5
- > Tile Anchorage + Supplement: 8
- > C40 rail 3,10m: 2
- > C40 rail 2,08m: 2
- > Final Fixing (Z): 4
- > Intermediate mounting (T): 8

Description

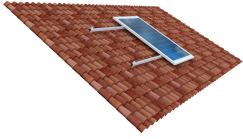
Support structures for photovoltaic modules, adjustable for any type of installation and roof. Anodized aluminium sections, pre-assembled triangles and stainless steel screws to guarantee every quality standard in any environment and location. High resistance to saline and/or corrosive environments, high scratch resistance, higher electrical insulation and greater durability.

The structure provided includes the attachments needed to fasten the photovoltaic modules, as well as to anchor the structure itself to the roof. Because of this, no primary structure is needed to adapt it to the roof proper, required to install the structure with the photovoltaic modules.

The guarantee of the structure and its fasteners stems from their proper installation and from the annual maintenance that is required by the applicable regulations.

Installation and assembly manuals for each type of support structure:

- Vertical Module, flat roof (CPV)
- Horizontal Module, flat roof (CPH)
- Sloped roof (CI)



CI-5

Code: EEI215.

Specifications

Mechanical characteristics

Weight (kg)	20
-------------	----

CI

Structures for inclined roof

CODE	TYPE	Módulos	Tile Anchorage + Supplement
EEI212.	CI-2	2	4
EEI213.	CI-3	3	6
EEI214.	CI-4	4	6
EEI215.	CI-5	5	8
EEI216.	CI-6	6	8
EEI217.	CI-7	7	10
EEI218.	CI-8	8	10
EEI219.	CI-9	9	12
EEI21A.	CI-10	10	12
EEI21B.	CI-11	11	14
EEI21C.	CI-12	12	14
EEI21D.	CI-13	13	16
EEI21E.	CI-14	14	16
EEI21F.	CI-15	15	18
EEI21G.	CI-16	16	18
EEI21H.	CI-17	17	20
EEI21I.	CI-18	18	20
EEI21J.	CI-19	19	22
EEI21K.	CI-20	20	22
EEI21L.	CI-21	21	24
EEI21M.	CI-22	22	24

Compatible for 60 and 72 cell PV modules (measures approximately 1722 x 1134 x 35 mm and 2100 x 1000 x 35 mm). Includes fixings for tile roofing type M12x250. For other types of roofing or fixing, please consult.