



CPH-14

CPH-14, Flat roof structures, horizontal module

Code: EEH20E. (CONSULTAR DISPONIBILIDAD)

- > Módulos: 14
- > Concrete Anchorage: 30
- > Final Fixing (Z): 30
- > Pre-assembled triangle: 15

Description

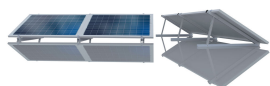
Support structures for photovoltaic modules, adjustable for any type of installation and roof. Anodized aluminium sections, pre-assembled triangles and stainless steel screws to guarantee every quality standard in any environment and location. High resistance to saline and/or corrosive environments, high scratch resistance, higher electrical insulation and greater durability.

The structure provided includes the attachments needed to fasten the photovoltaic modules, as well as to anchor the structure itself to the roof. Because of this, no primary structure is needed to adapt it to the roof proper, required to install the structure with the photovoltaic modules.

The guarantee of the structure and its fasteners stems from their proper installation and from the annual maintenance that is required by the applicable regulations.

Installation and assembly manuals for each type of support structure:

- Vertical Module, flat roof (CPV)
- Horizontal Module, flat roof (CPH)
- Sloped roof (CI)



CPH-14

Code: EEH20E.

Specifications

Compatible for 60 cell PV modules (approximate measurements 1722 x 1134 x 35 mm). Includes M12x140 fixing model for fastening in concrete. Adjustable to inclination of 25-30-35°. For other layouts or types of PV module/fixings, please consult.