

M/TR-25 Acc X 2

M/TR-25 Acc X 2, Measuring module for 2 current circuits. Maximum current: 25 A dc,

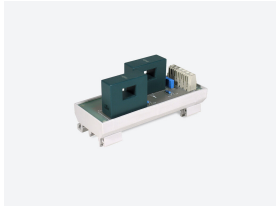
Code: E80010.

Description

It is extremely difficult to certify that a photovoltaic plant is at its peak performance without having control over the primary power generation sources that would certify it. **TR8** has been designed specifically to control strings in photovoltaic plants; it checks the level of current generated in the various groups in real time and, therefore, checks the current flowing through the voltage and current sensors connected to the unit.

Application

Solar photovoltaic string measurement application, used to measure up to sixteen direct-current generation strings and a reference voltage of up to 1,500 V.



M/TR-25 Acc X 2

Multi-channel DC voltage and current analyzer for photovoltaic strings

Code: E80010.

Specifications

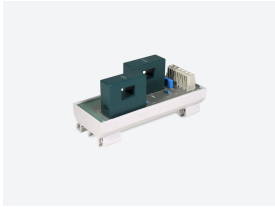
Mechanical characteristics

Weight (kg)	0,12
-------------	------

M-TR

Measuring module for TR devices

CODE	TYPE	Description
Measuring module		
E80010.	M/TR-25 Acc X 2	Measuring module for 2 current circuits. Maximum current
E80011.	M/TR-25 Acc X 4	Measuring module for 4 current circuits. Maximum current
E80013.	M/TR-200 Acc	Measuring module for 1 current circuit. Maximum current
E80012.	M/TR-100 Acc	100 A transformer for STM-H and TR (deep panel installation)



M/TR-25 Acc X 2

Multi-channel DC voltage and current analyzer for photovoltaic strings

Code: E80010.

Dimensions

