

## M/TR-25 Acc X 2

M/TR-25 Acc X 2, Measuring module for 2 current circuits. Maximum current: 25 A dc,

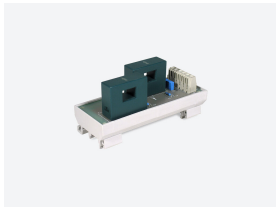
Code: E80010.

### Description

It is extremely difficult to certify that a photovoltaic plant is at its peak performance without having control over the primary power generation sources that would certify it. **TR8** has been designed specifically to control strings in photovoltaic plants; it checks the level of current generated in the various groups in real time and, therefore, checks the current flowing through the voltage and current sensors connected to the unit.

### Application

Solar photovoltaic string measurement application, used to measure up to sixteen direct-current generation strings and a reference voltage of up to 1,500 V.



# M/TR-25 Acc X 2

Multi-channel DC voltage and current analyzer for photovoltaic strings

Code: E80010.

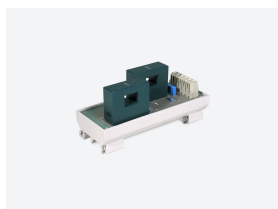
## Specifications

### Mechanical characteristics

|             |      |
|-------------|------|
| Weight (kg) | 0,12 |
|-------------|------|

M-TR  
Measuring module for TR devices

| CODE             | TYPE            | Description  |
|------------------|-----------------|--|
| Measuring module |                 |  |
| E80010.          | M/TR-25 Acc X 2 | Measuring module for 2 current circuits. Maximum current     |
| E80011.          | M/TR-25 Acc X 4 | Measuring module for 4 current circuits. Maximum current     |
| E80012.          | M/TR-100 Acc    | 100 A transformer for STM-H and TR (deep panel installation) |



## M/TR-25 Acc X 2

Multi-channel DC voltage and current analyzer for photovoltaic strings

Code: E80010.

### Dimensions

