



eManager Pro 4G ActIO 22172 Energy

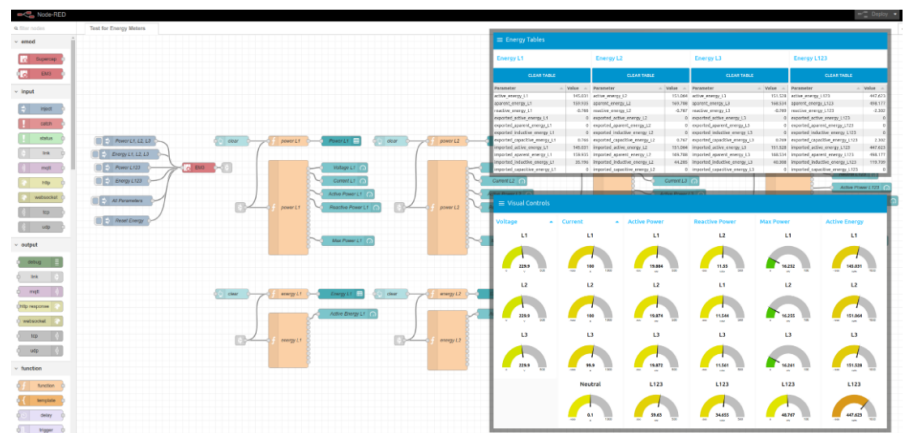
eManager Pro 4G ActIO 22172 Energy, ARM controller

Code: D303200026700

- > Memory: 512 MB | 8 GB eMMC
- > Analogue Inputs: 7
- > Módulos: 9
- > Communications: RS232/485 | Ethernet | Wi-Fi | 4G EMEA
- > N° relays: 3 (6 A)
- > Digital inputs: 2
- > Power supply: 85 ... 264 V~
- > CPU: ARM Cortex A7 800 MHz

Description

eManager Energy is an industrial IoT controllers product range with integrated three-phase energy metering. eManager Energy centralizes power network analyzer features with datalogging and communications. The energy module is able to measure up to one three-phase circuit or three single-phase circuits. It integrates 4 quadrant monitoring, including the main electrical parameters for single-phase and three-phase. Measurement accuracy is Class 1 Active and Class 2 Reactive; and the secondary current is 1 A. In addition, a custom Node-RED node is available to facilitate the data collecting and displaying with a local real-time dashboard that can be accessed via their own Wi-Fi network.





eManager Pro 4G ActIO 22172 Energy

Code: D303200026700

Specifications

AC power supply

Consumption	8,8 ... 10,5 VA
Frequency	47 ... 63 Hz
Nominal voltage	85 ... 264 V~

DC power supply

Consumption	6,4 ... 6,5 W
Nominal voltage	120 ... 300 Vdc

Electrical characteristics

Isolation level	3 kVac
Sensor	PT100 & PT1000

Mechanical characteristics

Size (mm) width x height x depth	158 x 89 x 48 (mm)
Envelope	Polycarbonate UL94 - Self-extinguishing V2
Fastening	DIN rail 46277 (EN 50022)
Weight (kg)	1

Environmental characteristics

Protection class	IP 20
Relative humidity (without condensation)	5...95 %
Working temperature	-20...+50 °C

Current measurement circuit

Installation category	CAT III 300 V
Nominal current (In)	... / 1A
Phase current measuring range	2...120% de In

Voltage measurement circuit

Installation category	CAT III 300 V
Voltage measuring range	5 ... 120 % Un
Nominal voltage	285V Ph-N, 480V Ph-Ph

Communication Network

Technology / Type	Ethernet 10/100 Mbps
-------------------	----------------------

Control Unit

Clock	RTC
CPU	ARM Cortex A7 800 MHz



eManager Pro 4G ActIO 22172 Energy

Code: D303200026700

PSRAM Memory	512 MB
SPI Flash Memory	8 GB eMMC

Standards

Electrical safety, Maximum height (m)	2000
Electrical safety, Installation category	CAT III 300 V
Electrical safety, Contamination level/class	Double-insulated electric shock protection class II (IEC 61010)
Standards	UNE EN 61010-1, UNE-EN 61000-6-2, UNE-EN 61000-6-4

Electrical safety

Insulation	3 kVac
------------	--------

Analogue inputs

Quantity	7
Nominal range	0...10 V / 0...20 mA o 4...20 mA
Nominal input range	0...10 V / 0...20 mA or 4...20 mA

Digital inputs

Quantity	2
Type	0...24 Vdc

Digital relay outputs

Quantity	2
Type	NO
Maximum current	6 A
Maximum open contact voltage	250 Vac

Measurement accuracy

Reactive energy measurement (kvarh)	Class 2
Active energy measurement (kWh)	Class 1

Radio communication

Band	LTE-FDD B1/B3/B7/B8/B20/B28A, WCDMA B1/B8 & GSM/EDGE B3/B8
Technology / Type	4G EMEA

Serial communication

Technology / Type	RS-232 (full-duplex) / RS-485 (half-duplex)Galvanic isolation
-------------------	---

Wireless communication

Band	802.11 b/g/n (2.4 GHz.)
Technology / Type	Wi-Fi



eManager Pro 4G ActIO 22172 Energy

Code: D303200026700

eManager ActIO Energy
IoT programmable controllers with integrated energy metering and inputs and outputs

CODE	TYPE	CPU	Memory	Analogue Inputs	Digital inputs	Nº relays	Communications	Power supply
eManager ActIO Energy								
D303200026700	eManager Pro 4G ActIO 22172 Energy	ARM Cortex A7 800 MHz	512 MB 8 GB eMMC	7	2	3 (6 A)	RS232 / 485 Ethernet Wi-Fi 4G EMEA	85 ... 264 V~