



eManager Pro 4G

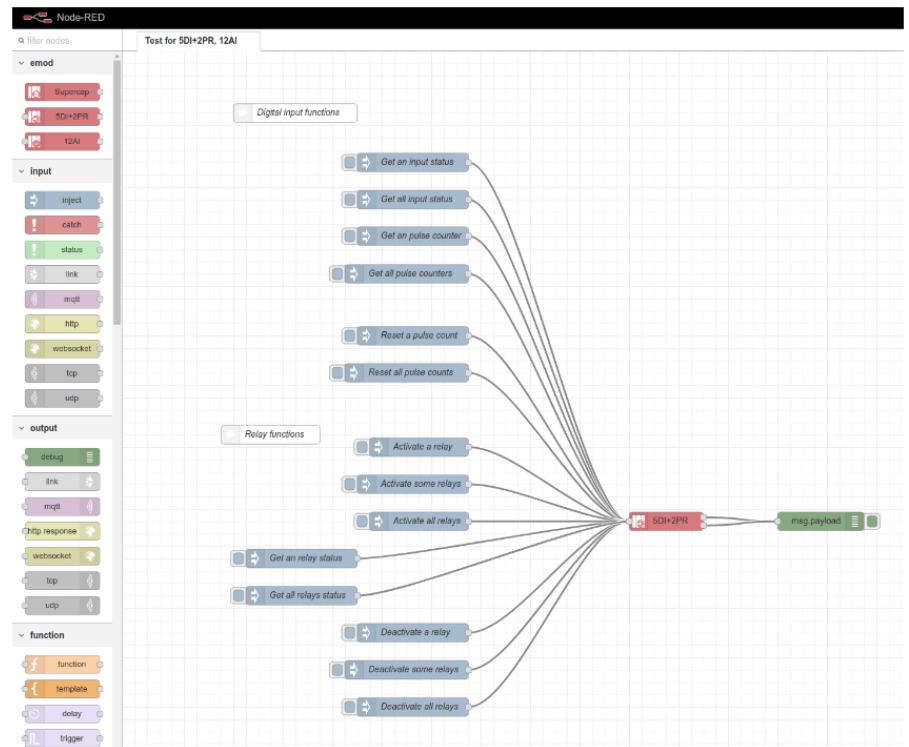
eManager Pro 4G, ARM controller

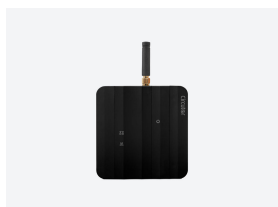
Code: D30020.

- > Memory: 512 MB | 8 GB eMMC
- > Módulos: 5
- > Communications: RS232/485 | Ethernet | Wi-Fi | 4G EMEA
- > Power supply: 85 ... 264 V~
- > CPU: ARM Cortex A7 800 MHz

Description

eManager Essentials is an industrial IoT controller equipped with a high-performance control unit with an embedded Linux Yocto system and fully integrated Node-RED software. It includes RS-232/485, Ethernet and Wi-Fi communications. Two versions are available, **eManager** and **eManager Pro**, expandable with a wide range of expansion modules.





eManager Pro 4G

Code: D30020.

Specifications

AC power supply

Consumption	8,8 ... 10,5 VA
Frequency	47 ... 63 Hz
Nominal voltage	85 ... 264 V~

DC power supply

Consumption	6,4 ... 6,5 W
Nominal voltage	120 ... 300 Vdc

Electrical characteristics

Isolation level	3 kVac
-----------------	--------

Mechanical characteristics

Size (mm) width x height x depth	88 x 89 x 48 (mm)
Envelope	Polycarbonate UL94 - Self-extinguishing V2
Fastening	DIN rail 46277 (EN 50022)
Weight (kg)	0,21

Environmental characteristics

Protection class	IP 20
Relative humidity (without condensation)	5...95 %
Working temperature	-20...+50 °C

Communication Network

Technology / Interface	Ethernet 10/100 Mbps
------------------------	----------------------

Control Unit

Clock	RTC
CPU	ARM Cortex A7 800 MHz
PSRAM Memory	512 MB
SPI Flash Memory	8 GB eMMC

Standards

Electrical safety, Maximum height (m)	2000
Electrical safety, Installation category	CAT III 300 V
Electrical safety, Contamination level/class	Double-insulated electric shock protection class II (IEC 61010)
Standards	UNE EN 61010-1, UNE-EN 61000-6-2, UNE-EN 61000-6-4

Electrical safety

Insulation	3 kVac
------------	--------



eManager Pro 4G

Code: D30020.

Radio communication

Band	LTE-FDD B1/B3/B7/B8/B20/B28A, WCDMA B1/B8 & GSM/EDGE B3/B8
Technology / Type	4G EMEA

Serial communication

Technology / Type	RS-232 (full-duplex) / RS-485 (half-duplex)Galvanic isolation
-------------------	---

Wireless communication

Band	802.11 b/g/n (2.4 GHz.)
Technology / Type	Wi-Fi

eManager Essential

IoT programmable controllers

CODE	TYPE	CPU	Memory	Communications	Power supply
eManager Essential					
D20000.	eManager	ARM Cortex A7 700 MHz	256 MB 512 MB NAND	RS232/485 Ethernet Wi-Fi	85 ... 264 V~
D20010.	eManager GPRS	ARM Cortex A7 700 MHz	256 MB 512 MB NAND	RS232/485 Ethernet Wi-Fi GPRS	85 ... 264 V~
D20011.	eManager GPRS DC	ARM Cortex A7 700 MHz	256 MB 512 MB NAND	RS232/485 Ethernet Wi-Fi GPRS	9...36 Vdc
D30000.	eManager Pro	ARM Cortex A7 800 MHz	512 MB 8 GB eMMC	RS232/485 Ethernet Wi-Fi	85 ... 264 V~
D30001.	eManager Pro (DC)	ARM Cortex A7 800 MHz	512 MB 8 GB eMMC	RS232/485 Ethernet Wi-Fi	9...36 Vdc
D30010.	eManager Pro GPRS	ARM Cortex A7 800 MHz	512 MB 8 GB eMMC	RS232/485 Ethernet Wi-Fi GPRS	85 ... 264 V~
D30020.	eManager Pro 4G	ARM Cortex A7 800 MHz	512 MB 8 GB eMMC	RS232/485 Ethernet Wi-Fi 4G EMEA	85 ... 264 V~
D30030.	eManager Pro 4G (LATAM/AUX)	ARM Cortex A7 800 MHz	512 MB 8 GB eMMC	RS232/485 Ethernet Wi-Fi 4G LATAM,AUS,NZ	85 ... 264 V~