



eManager

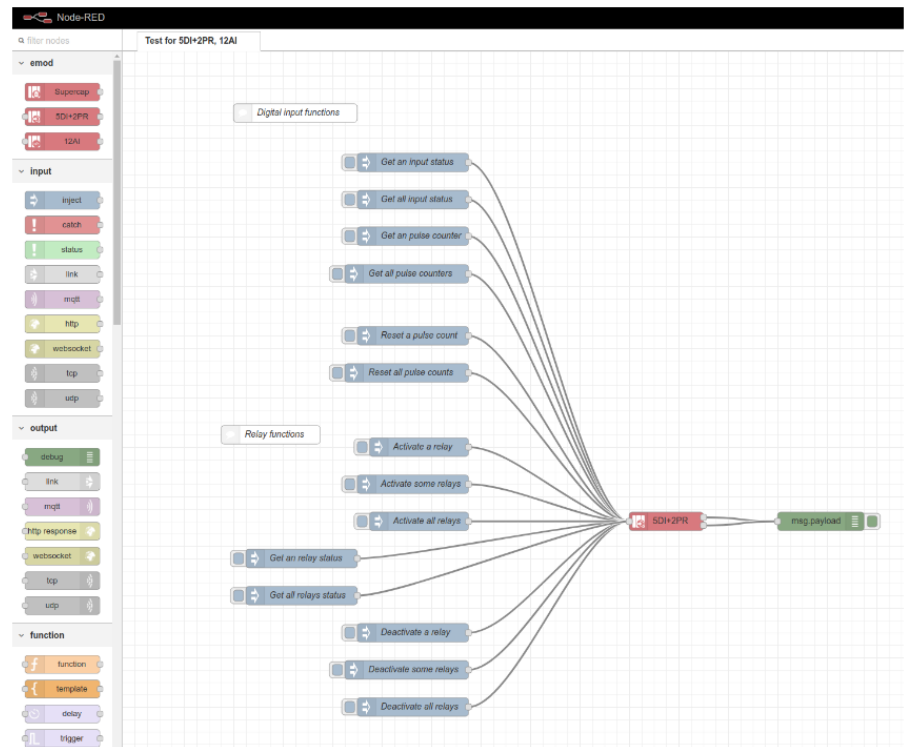
eManager, ARM controller

Code: D20000.

- > Memory: 256 MB | 512 MB NAND
- > Módulos: 5
- > Communications: RS232/485 | Ethernet | Wi-Fi
- > Power supply: 85 ... 264 V~
- > CPU: ARM Cortex A7 700 MHz

Description

eManager Essentials is an industrial IoT controller equipped with a high-performance control unit with an embedded Linux Yocto system and fully integrated Node-RED software. It includes RS-232/485, Ethernet and Wi-Fi communications. Two versions are available, **eManager** and **eManager Pro**, expandable with a wide range of expansion modules.





eManager

Code: D20000.

Specifications

AC power supply

Consumption	8,8 ... 10,5 VA
Frequency	47 ... 63 Hz
Nominal voltage	85 ... 264 V~

DC power supply

Consumption	6,4 ... 6,5 W
Nominal voltage	120 ... 300 Vdc

Electrical characteristics

Isolation level	3 kVac
-----------------	--------

Mechanical characteristics

Size (mm) width x height x depth	88 x 89 x 48 (mm)
Envelope	Polycarbonate UL94 - Self-extinguishing V4
Fastening	DIN rail 46277 (EN 50022)
Weight (kg)	0,178

Environmental characteristics

Protection class	IP 20
Relative humidity (without condensation)	5...95 %
Working temperature	-20...+50 °C

Communication Network

Technology / Type	Ethernet 10/100 Mbps
-------------------	----------------------

Control Unit

Clock	RTC
CPU	ARM Cortex A7 700 MHz
PSRAM Memory	256 MB
SPI Flash Memory	512 MB NAND

Standards

Electrical safety, Maximum height (m)	2000
Electrical safety, Installation category	CAT III 300 V
Electrical safety, Contamination level/class	Double-insulated electric shock protection class II (IEC 61010)
Standards	UNE EN 61010-1, UNE-EN 61000-6-2, UNE-EN 61000-6-4

Electrical safety

Insulation	3 kVac
------------	--------



eManager

Code: D20000.

Serial communication

Technology / Type	RS-232 (full-duplex) / RS-485 (half-duplex)Galvanic isolation
-------------------	---

Wireless communication

Band	802.11 b/g/n (2.4 GHz.)
Technology / Type	Wi-Fi

eManager Essential

IoT programmable controllers

CODE	TYPE	CPU	Memory	Communications	Power supply
eManager Essential					
D20000.	eManager	ARM Cortex A7 700 MHz	256 MB 512 MB NAND	RS232/485 Ethernet Wi-Fi	85 ... 264 V~
D20010.	eManager GPRS	ARM Cortex A7 700 MHz	256 MB 512 MB NAND	RS232/485 Ethernet Wi-Fi GPRS	85 ... 264 V~
D20011.	eManager GPRS DC	ARM Cortex A7 700 MHz	256 MB 512 MB NAND	RS232/485 Ethernet Wi-Fi GPRS	9...36 Vdc
D30000.	eManager Pro	ARM Cortex A7 800 MHz	512 MB 8 GB eMMC	RS232/485 Ethernet Wi-Fi	85 ... 264 V~
D30001.	eManager Pro (DC)	ARM Cortex A7 800 MHz	512 MB 8 GB eMMC	RS232/485 Ethernet Wi-Fi	9...36 Vdc
D30010.	eManager Pro GPRS	ARM Cortex A7 800 MHz	512 MB 8 GB eMMC	RS232/485 Ethernet Wi-Fi GPRS	85 ... 264 V~
D30020.	eManager Pro 4G	ARM Cortex A7 800 MHz	512 MB 8 GB eMMC	RS232/485 Ethernet Wi-Fi 4G EMEA	85 ... 264 V~
D3002000C0000	eManager Pro 4G SC	ARM Cortex A7 800 MHz	512 MB 8 GB eMMC	RS232/485 Ethernet Wi-Fi 4G EMEA	85 ... 264 V~
D30030.	eManager Pro 4G (LATAM/AUX)	ARM Cortex A7 800 MHz	512 MB 8 GB eMMC	RS232/485 Ethernet Wi-Fi 4G LATAM,AUS,NZ	85 ... 264 V~