

## CBC96 .../60mV

CBC96 .../60mV, Amperímetre per a mesura en corrent continu, bobina mòbil, 2 relés

Code: M14830.

- > Escala: 90° , P1
- > Precisió: 1,5
- > Rang mesura (V): .../60mV
- > Mòduls: 96x96

## Especificacions

### Característiques mecàniques

Mida (mm) amplada x alçada x profunditat 96 x 96 x 85.3 (mm)

### Característiques ambientals

Grau de protecció Panell: IP 52 (Frontal), IP 20 (Terminals)

Temperatura d'emmagatzematge -25...+70 °C

Temperatura de treball +5 ... + 55 °C

### Current measurement circuit

Consumption 60 mV

### Circuit de mesura de corrent

Sobrecàrrega admissible 1,2 In permanent / 5 In durant 30 s / 10 In durant 5 s / 40 In durant 1 s

### Característiques elèctriques

Tensió d'aïllament, circuit 2 kV a 50Hz < 1 min entre mecanismo y caja

### Normes

Seguretat elèctrica, Altitud màx. (m) 2000

Normes IEC 51, IEC 1010, IEC 529, IEC 255, IEC 278, IEC 414, IEC 144, LLOYD'S (TEST. ESP. N° 1)

### Pes net (kg)

0,305

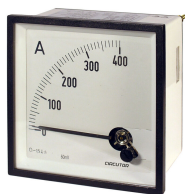
### Precisió de mesures

Precisió 1,5 % FE

### M1A

Amperímetres CC

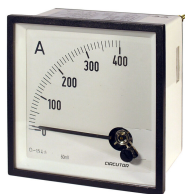
CODI	TIPUS	Escala	Precisió	Rang mesura (A)	Mòduls	Equip	Fons Escala	Rang mesurat (A)	Modules	Device	Full scale	Measurement Range (A)	Mesura	Freqüència (Hz)	Freqüència (Hz)	Descripció
M10111.	EC48 100mA	90°, P2	1,5	0,1	48x48											
M10112.	EC48 150mA	90°, P2	1,5	0,15	48x48											
M10114.	EC48 250mA	90°, P2	1,5	0,25	48x48											



## CBC96 .../60mV

Code: M14830.

CODI	TIPUS	Escala	Precisió	Rang mesura (A)	Mòduls	Equip	Fons Escala	Rang mesurat (A)	Modules	Device	Full scale	Measurement Range (A)	Mesura	Freqüència (Hz)	Freqüència (Hz)	Descripció
M10115.	EC48 300mA	90°, P2	1,5	0,3	48x48											
M10116.	EC48 400mA	90°, P2	1,5	0,4	48x48											
M10117.	EC48 500mA	90°, P2	1,5	0,5	48x48											
M10118.	EC48 600mA	90°, P2	1,5	0,6	48x48											
M10121.	EC72 100mA	90°, P2	1,5	0,1	72x72											
M10122.	EC72 150mA	90°, P2	1,5	0,15	72x72											
M10124.	EC72 250mA	90°, P2	1,5	0,25	72x72											
M10125.	EC72 300mA	90°, P2	1,5	0,3	72x72											
M10126.	EC72 400mA	90°, P2	1,5	0,4	72x72											
M10127.	EC72 500mA	90°, P2	1,5	0,5	72x72											
M10128.	EC72 600mA	90°, P2	1,5	0,6	72x72											
M10131.	EC96 100mA	90°, P2	1,5	0,1	96x96											
M10132.	EC96 150mA	90°, P2	1,5	0,15	96x96											
M10134.	EC96 250mA	90°, P2	1,5	0,25	96x96											
M10135.	EC96 300mA	90°, P2	1,5	0,3	96x96											
M10136.	EC96 400mA	90°, P2	1,5	0,4	96x96											
M10137.	EC96 500mA	90°, P2	1,5	0,5	96x96											
M10138.	EC96 600mA	90°, P2	1,5	0,6	96x96											
M10141.	EC144 100mA	90°, P2	1,5	0,1	144x144											
M10142.	EC144 150mA	90°, P2	1,5	0,15	144x144											
M10144.	EC144 250mA	90°, P2	1,5	0,25	144x144											
M10145.	EC144 300mA	90°, P2	1,5	0,3	144x144											
M10146.	EC144 400mA	90°, P2	1,5	0,4	144x144											
M10147.	EC144 500mA	90°, P2	1,5	0,5	144x144											
M10148.	EC144 600mA	90°, P2	1,5	0,6	144x144											
M14830.	CBC96 .../60mV	90°, P1	1,5		96x96											
M10212.	EC48 5A	90°, P2	1,5	5	48x48											
M10213.	EC48 10A	90°, P2	1,5	10	48x48											
M10214.	EC48 15A	90°, P2	1,5	15	48x48											
M10215.	EC48 20A	90°, P2	1,5	20	48x48											
M10216.	EC48 25A	90°, P2	1,5	25	48x48											
M10217.	EC48 30A	90°, P2	1,5	30	48x48											
M10218.	EC48 40A	90°, P2	1,5	40	48x48											
M10219.	EC48 50A	90°, P2	1,5	50	48x48											
M1021A.	EC48 60A	90°, P2	1,5	60	48x48											
M10210.	EC48 .../5A	90°, P2	1,5	.../5 A	48x48											
M10222.	EC72 5A	90°, P2	1,5	5	72x72											
M10223.	EC72 10A	90°, P2	1,5	10	72x72											
M10224.	EC72 15A	90°, P2	1,5	15	72x72											
M10225.	EC72 20A	90°, P2	1,5	20	72x72											
M10226.	EC72 25A	90°, P2	1,5	25	72x72											
M10227.	EC72 30A	90°, P2	1,5	30	72x72											
M10228.	EC72 40A	90°, P2	1,5	40	72x72											
M10229.	EC72 50A	90°, P2	1,5	50	72x72											
M1022A.	EC72 60A	90°, P2	1,5	60	72x72											
M1022B.	EC72 75A	90°, P2	1,5	75	72x72											
M1022C.	EC72 100A	90°, P2	1,5	100	72x72											
M10220.	EC72 .../5A	90°, P2	1,5	.../5 A	72x72											
M10232.	EC96 5A	90°, P2	1,5	5	96x96											
M10233.	EC96 10A	90°, P2	1,5	10	96x96											
M10234.	EC96 15A	90°, P2	1,5	15	96x96											
M10235.	EC96 20A	90°, P2	1,5	20	96x96											
M10236.	EC96 25A	90°, P2	1,5	25	96x96											
M10237.	EC96 30A	90°, P2	1,5	30	96x96											
M10238.	EC96 40A	90°, P2	1,5	40	96x96											
M10239.	EC96 50A	90°, P2	1,5	50	96x96											
M1023A.	EC96 60A	90°, P2	1,5	60	96x96											
M1023B.	EC96 75A	90°, P2	1,5	75	96x96											
M1023C.	EC96 100A	90°, P2	1,5	100	96x96											
M10230.	EC96 .../5A	90°, P2	1,5	.../5 A	96x96											
M10242.	EC144 5A	90°, P2	1,5	5	144x144											
M10243.	EC144 10A	90°, P2	1,5	10	144x144											
M10244.	EC144 15A	90°, P2	1,5	15	144x144											
M10245.	EC144 20A	90°, P2	1,5	20	144x144											
M10246.	EC144 25A	90°, P2	1,5	25	144x144											
M10247.	EC144 30A	90°, P2	1,5	30	144x144											
M10248.	EC144 40A	90°, P2	1,5	40	144x144											
M10249.	EC144 50A	90°, P2	1,5	50	144x144											



## CBC96 .../60mV

Code: M14830.

CODI	TIPUS	Escala	Precisió	Rang mesura (A)	Mòduls	Equip	Fons Escala	Rang mesurat (A)	Modules	Device	Full scale	Measurement Range (A)	Mesura	Freqüència (Hz)	Freqüència (Hz)	Descripció
M1024A.	ECT144 60A	90°, P2	1,5	60	144x144											
M1024B.	ECT144 75A	90°, P2	1,5	75	144x144											
M1024C.	ECT144 100A	90°, P2	1,5	100	144x144											
M10240.	ECT144 .../5A	90°, P2	1,5	.../5 A	144x144											
M10262.	EMSC45 5A	90°, P2	1,5	5												
M10263.	EMSC45 10A	90°, P2	1,5	10												
M10264.	EMSC45 15A	90°, P2	1,5	15												
M10265.	EMSC45 20A	90°, P2	1,5	20												
M10266.	EMSC45 25A	90°, P2	1,5	25												
M10267.	EMSC45 30A	90°, P2	1,5	30												
M10268.	EMSC45 40A	90°, P2	1,5	40												
M10269.	EMSC45 50A	90°, P2	1,5	50												
M1026A.	EMSC45 60A	90°, P2	1,5	60												
M10260.	EMSC45 .../5A	90°, P2	1,5	.../5 A												
M10161.	EMSC45 100mA	90°, P2	1,5	0,1												
M10162.	EMSC45 150mA	90°, P2	1,5	0,15												
M10164.	EMSC45 250mA	90°, P2	1,5	0,25												
M10165.	EMSC45 300mA	90°, P2	1,5	0,3												
M10166.	EMSC45 400mA	90°, P2	1,5	0,4												
M10167.	EMSC45 500mA	90°, P2	1,5	0,5												
M10168.	EMSC45 600mA	90°, P2	1,5	0,6												
M10521.	EC72 FA .../5 A	90°, P2	1,5	.../5 A	72x72											
M10531.	EC96 FA .../5 A	90°, P2	1,5	.../5 A	96x96											
M14841.	CBC96 150V	90°, P1	1,5		96x96											
M14842.	CBC96 250V	90°, P1	1,5		96x96											
M14843.	CBC96 300V	90°, P1	1,5		96x96											
M14844.	CBC96 400V	90°, P1	1,5		96x96											
M14845.	CBC96 500V	90°, P1	1,5		96x96											
M14846.	CBC96 600V	90°, P1	1,5		96x96											
M10920.	EZC72 .../5A	240°, P2	5	.../5 A	72x72											
M10930.	EZC96 .../5A	240°, P2	5	.../5 A	96x96											
M10415.	EC48 250V	90°, P1	1,5		48x48											
M10416.	EC48 300V	90°, P1	1,5		48x48											
M10417.	EC48 400V	90°, P1	1,5		48x48											
M10418.	EC48 500V	90°, P1	1,5		48x48											
M10419.	EC48 600V	90°, P1	1,5		48x48											
M10410.	EC48 .../110V	90°, P1	1,5		48x48											
M10425.	EC72 250V	90°, P1	1,5		72x72											
M10426.	EC72 300V	90°, P1	1,5		72x72											
M10427.	EC72 400V	90°, P1	1,5		72x72											
M10428.	EC72 500V	90°, P1	1,5		72x72											
M10429.	EC72 600V	90°, P1	1,5		72x72											
M10420.	EC72 .../110V	90°, P1	1,5		72x72											
M10449.	ECT144 600V	90°, P1	1,5		72x72											
M10435.	EC96 250V	90°, P1	1,5		96x96											
M10436.	EC96 300V	90°, P1	1,5		96x96											
M10437.	EC96 400V	90°, P1	1,5		96x96											
M10438.	EC96 500V	90°, P1	1,5		96x96											
M10439.	EC96 600V	90°, P1	1,5		96x96											
M10430.	EC96 .../110V	90°, P1	1,5		96x96											
M10445.	ECT144 250V	90°, P1	1,5		144x144											
M10446.	ECT144 300V	90°, P1	1,5		144x144											
M10447.	ECT144 400V	90°, P1	1,5		144x144											
M10448.	ECT144 500V	90°, P1	1,5		144x144											
M10440.	ECT144 .../110V	90°, P1	1,5		144x144											
M10476.	EMSC45 300V	90° P1	1,5													
M10478.	EMSC45 500V	90° P1	1,5													
M10470.	EMSC45 .../110V	90° P1	1,5													
<b>Three-phase 3 wire</b>																
M10625.	EC72 FIII 250V	90°, P1	1,5		72x72											
M10626.	EC72 FIII 300V	90°, P1	1,5		72x72											
M10627.	EC72 FIII 400V	90°, P1	1,5		72x72											
M10628.	EC72 FIII 500V	90°, P1	1,5		72x72											
M10629.	EC72 FIII 600V	90°, P1	1,5		72x72											
M10632.	EC96 FIII .../110V	90°, P1	1,5		72x72											
M10635.	EC96 FIII 250V	90°, P1	1,5		96x96											
M10636.	EC96 FIII 300V	90°, P1	1,5		96x96											
M10637.	EC96 FIII 400V	90°, P1	1,5		96x96											



## CBC96 .../60mV

Code: M14830.

CODI	TIPUS	Escala	Precisió	Rang mesura (A)	Mòduls	Equip	Fons Escala	Rang mesurat (A)	Modules	Device	Full scale	Measurement Range (A)	Mesura	Freqüència (Hz)	Freqüència (Hz)	Descripció
M10638.	EC96 FIII 500V	90°, P1	1,5		96x96											
M10639.	EC96 FIII 600V	90°, P1	1,5		96x96											
<b>Three-phase 4 wire</b>																
M10725.	EC72 F III+N 250V	90°, P1	1,5		72x72											
M10726.	EC72 F III+N 300V	90°, P1	1,5		72x72											
M10727.	EC72 F III+N 400V	90°, P1	1,5		72x72											
M10728.	EC72 F III+N 500V	90°, P1	1,5		72x72											
M10729.	EC72 F III+N 600V	90°, P1	1,5		72x72											
M10735.	EC96 F III+N 250V	90°, P1	1,5		96x96											
M10736.	EC96 F III+N 300V	90°, P1	1,5		96x96											
M10737.	EC96 F III+N 400V	90°, P1	1,5		96x96											
M10738.	EC96 F III+N 500V	90°, P1	1,5		96x96											
M10739.	EC96 F III+N 600V	90°, P1	1,5		96x96											
<b>With sequence meter</b>																
M11038.	EC96 FN-S 500V	90°, P1	1,5		96x96											
M11125.	EZC72 250V	240°, P1	5		72x72	EZC72										
M11128.	EZC72 500V	240°, P1	5		72x72	EZC72										
M11135.	EZC96 250V	240°, P1	5		96x96	EZC96										
M11138.	EZC96 500V	240°, P1	5		96x96	EZC96										
M11412.	BC48 5A	90°, P1	1,5	5	48x48	BC48										
M11413.	BC48 10A	90°, P1	1,5	10	48x48	BC48										
M11416.	BC48 25A	90°, P1	1,5	25	48x48	BC48										
M11419.	BC48 50A	90°, P1	1,5	50	48x48	BC48										
M11410.	BC48 .../60mV	90°, P1	1,5	.../60mV	48x48	BC48										
M11422.	BC72 5A	90°, P1	1,5	5	72x72	BC72										
M11423.	BC72 10A	90°, P1	1,5	10	72x72	BC72										
M11426.	BC72 25A	90°, P1	1,5	25	72x72	BC72										
M11429.	BC72 50A	90°, P1	1,5	50	72x72	BC72										
M1142A.	BC72 60A	90°, P1	1,5	60	72x72	BC72										
M11420.	BC72 .../60mV	90°, P1	1,5	.../60mV	72x72	BC72										
M11432.	BC96 5A	90°, P1	1,5	5	96x96	BC96										
M11433.	BC96 10A	90°, P1	1,5	10	96x96	BC96										
M11436.	BC96 25A	90°, P1	1,5	25	96x96	BC96										
M11439.	BC96 50A	90°, P1	1,5	50	96x96	BC96										
M1143A.	BC96 60A	90°, P1	1,5	60	96x96	BC96										
M11430.	BC96 .../60mV	90°, P1	1,5	.../60mV	96x96	BC96										
M11442.	BC144 5A	90°, P1	1,5	5	144x144	BC144										
M11443.	BC144 10A	90°, P1	1,5	10	144x144	BC144										
M11446.	BC144 25A	90°, P1	1,5	25	144x144	BC144										
M11449.	BC144 50A	90°, P1	1,5	50	144x144	BC144										
M1144A.	BC144 60A	90°, P1	1,5	60	144x144	BC144										
M11440.	BC144 .../60mV	90°, P1	1,5	.../60mV	144x144	BC144										
M11462.	BMSC45 5A	90°, P1	1,5	5		BMSC45										
M11463.	BMSC45 10A	90°, P1	1,5	10		BMSC45										
M11466.	BMSC45 25A	90°, P1	1,5	25		BMSC45										
M11460.	BMSC45 .../60mV	90°, P1	1,5	.../60mV		BMSC45										
M11711.	BC48 1V	90°, P1	1,5		48x48	BC48										
M11714.	BC48 15V	90°, P1	1,5		48x48	BC48										
M11716.	BC48 30V	90°, P1	1,5		48x48	BC48										
M11718.	BC48 60V	90°, P1	1,5		48x48	BC48										
M11719.	BC48 100V	90°, P1	1,5		48x48	BC48										
M1171A.	BC48 150V	90°, P1	1,5		48x48	BC48										
M1171B.	BC48 250V	90°, P1	1,5		48x48	BC48										
M1171D.	BC48 400V	90°, P1	1,5		48x48	BC48										
M1171E.	BC48 500V	90°, P1	1,5		48x48	BC48										
M1171F.	BC48 600V	90°, P1	1,5		48x48	BC48										
M11721.	BC72 1V	90°, P1	1,5		72x72	BC72										
M11724.	BC72 15V	90°, P1	1,5		72x72	BC72										
M11726.	BC72 30V	90°, P1	1,5		72x72	BC72										
M11728.	BC72 60V	90°, P1	1,5		72x72	BC72										
M11729.	BC72 100V	90°, P1	1,5		72x72	BC72										
M1172A.	BC72 150V	90°, P1	1,5		72x72	BC72										
M1172B.	BC72 250V	90°, P1	1,5		72x72	BC72										
M1172D.	BC72 400V	90°, P1	1,5		72x72	BC72										
M1172E.	BC72 500V	90°, P1	1,5		72x72	BC72										
M1172F.	BC72 600V	90°, P1	1,5		72x72	BC72										
M11731.	BC96 1V	90°, P1	1,5		96x96	BC96										
M11734.	BC96 15V	90°, P1	1,5		96x96	BC96										



## CBC96 .../60mV

Code: M14830.

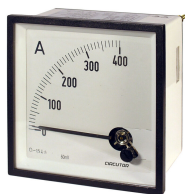
CODI	TIPUS	Escala	Precisió	Rang mesura (A)	Mòduls	Equip	Fons	Escala	Rang mesurat (A)	Modules	Device	Full scale	Measurement Range (A)	Mesura	Freqüència (Hz)	Freqüència (Hz)	Descripció
M11736.	BC96 30V	90°, P1	1,5		96x96	BC96											
M11738.	BC96 60V	90°, P1	1,5		96x96	BC96											
M11739.	BC96 100V	90°, P1	1,5		96x96	BC96											
M1173A.	BC96 150V	90°, P1	1,5		96x96	BC96											
M1173B.	BC96 250V	90°, P1	1,5		96x96	BC96											
M1173D.	BC96 400V	90°, P1	1,5		96x96	BC96											
M1173E.	BC96 500V	90°, P1	1,5		96x96	BC96											
M1173F.	BC96 600V	90°, P1	1,5		96x96	BC96											
M11741.	BC144 1V	90°, P1	1,5		144x144	BC144											
M11744.	BC144 15V	90°, P1	1,5		144x144	BC144											
M11746.	BC144 30V	90°, P1	1,5		144x144	BC144											
M11748.	BC144 60V	90°, P1	1,5		144x144	BC144											
M11749.	BC144 100V	90°, P1	1,5		144x144	BC144											
M1174A.	BC144 150V	90°, P1	1,5		144x144	BC144											
M1174B.	BC144 250V	90°, P1	1,5		144x144	BC144											
M1174D.	BC144 400V	90°, P1	1,5		144x144	BC144											
M1174E.	BC144 500V	90°, P1	1,5		144x144	BC144											
M1174F.	BC144 600V	90°, P1	1,5		144x144	BC144											
M1022Z.	SEC48 5/5 A			5/5	48x48	EC48		5/5 A									
M104Z1.	SEC48 1000 /110V				48x48	EC48		1000 /110 V									
<b>Exchangeable Scales</b>																	
M11429.	SBC48 50A/60mV				48x48	BC48		50A/60 mV									
M11823.	SIP48 0...10V				48x48	BC48		0...10 V									
M1222C.	SMC48 100/5 A			100/5	48x48	MC48											
M10223.	SEC48 10/5 A			10/5	48x48	EC48		10/5 A									
M10224.	SEC48 15/5 A			15/5	48x48	EC48		15/5 A									
M1042Z.	SEC48 3300 /110V				48x48	EC48		3300 /110 V									
M1142A.	SBC48 60A/60mV				48x48	BC48		60A/60 mV									
M1182Z.	SIP48 0...20mA				48x48	BC48		0...20 mA									
M1222F.	SMC48 200/5 A			200/5	48x48	MC48											
M10225.	SEC48 20/5 A			20/5	48x48	EC48		20/5 A									
M10226.	SEC48 25/5 A			25/5	48x48	EC48		25/5 A									
M10423.	SEC48 6600 /110V				48x48	EC48		6600 /110 V									
M1142B.	SBC48 75A/60mV				48x48	BC48		75A/60 mV									
M11821.	SIP48 4...20mA				48x48	BC48		4...20 mA									
M1222H.	SMC48 300/5 A			300/5	48x48	MC48											
M10227.	SEC48 30/5 A			30/5	48x48	EC48		30/5 A									
M10228.	SEC48 40/5 A				48x48	EC48		40/5 A	40/5								
M10424.	SEC48 13200 /110V				48x48	EC48		13200 /110 V									
M1142C.	SBC48 100A/60mV				48x48	BC48		100A/60 mV									
M1222J.	SMC48 400/5 A			400/5	48x48	MC48											
M10229.	SEC48 50/5 A			50/5	48x48	EC48		50/5 A									
M1022A.	SEC48 60/5 A			60/5	48x48	EC48		60/5 A									
M10425.	SEC48 15000 /110V				48x48	EC48		15000 /110 V									
M1142E.	SBC48 150A/60mV				48x48	BC48		150A/60 mV									
M1222K.	SMC48 500/5 A			500/5	48x48	MC48											
M1022B.	SEC48 75/5 A			75/5	48x48	EC48		75/5 A									
M1022C.	SEC48 100/5 A			100/5	48x48	EC48		100/5 A									
M10426.	SEC48 20000 /110V				48x48	EC48		20000 /110 V									
M1142F.	SBC48 200A/60mV				48x48	BC48		200A/60 mV									
M1222L.	SMC48 600/5 A			600/5	48x48	MC48											
M1022D.	SEC48 125/5 A				48x48	EC48		125/5 A	125/5								
M1022E.	SEC48 150/5 A			150/5	48x48	EC48		150/5 A									
M10427.	SEC48 22000 /110V				48x48	EC48		22000 /110 V									
M1142G.	SBC48 250A/60mV				48x48	BC48		250A/60 mV									
M1222M.	SMC48 750/5 A			750/5	48x48	MC48											
M1022F.	SEC48 200/5 A			200/5	48x48	EC48		200/5 A									
M1022G.	SEC48 250/5 A			250/5	48x48	EC48		250/5 A									
M10428.	SEC48 25000 /110V				48x48	EC48		25000 /110 V									
M1222N.	SMC48 800/5 A			800/5	48x48	MC48											
M1022H.	SEC48 300/5 A			300/5	48x48	EC48		300/5 A									
M1022J.	SEC48 400/5 A			400/5	48x48	EC48		400/5 A									
M1222P.	SMC48 1000/5 A			1000/5	48x48	MC48											



## CBC96 .../60mV

Code: M14830.

CODI	TIPUS	Escala	Precisió	Rang mesura (A)	Mòduls	Equip	Fons Escala	Rang mesurat (A)	Modules	Device	Full scale	Measurement Range (A)	Mesura	Freqüència (Hz)	Freqüència (Hz)	Descripció
M1022K.	SEC48 500/5 A			500/5	48x48	EC48	500/5 A									
M1022L.	SEC48 600/5 A			600/5	48x48	EC48	600/5 A									
M1222R.	SMC48 1500/5 A			1500/5	48x48	MC48										
M1022M.	SEC48 750/5 A			750/5	48x48	EC48	750/5 A									
M1022N.	SEC48 800/5 A			800/5	48x48	EC48	800/5 A									
M1222S.	SMC48 2000/5 A			2000/5	48x48	MC48										
M1022P.	SEC48 1000/5 A			1000/5	48x48	EC48	1000/5 A									
M1022Q.	SEC48 1200/5 A			1200/5	48x48	EC48	1200/5 A									
M1022R.	SEC48 1500/5 A			1500/5	48x48	EC48	1500/5 A									
M1022S.	SEC48 2000/5 A				48x48	EC48	2000/5 A	2000/5								
M1022T.	SEC48 2500/5 A			2500/5	48x48	EC48	2500/5 A									
M1022U.	SEC48 3000/5 A				48x48	EC48	3000/5 A	3000/5								
M1022V.	SEC48 4000/5 A				48x48	EC48	4000/5 A	4000/5								
M1022W.	SEC48 5000/5 A			5000/5	48x48	EC48	5000/5 A									
M114ZH.	SBC48 300A/60mV				48x48	BC48	300A/60 mV									
M114ZJ.	SBC48 400A/60mV				48x48	BC48	400A/60mV									
M114ZL.	SBC48 600A/60mV				48x48	BC48	600A/60 mV									
M114ZP.	SBC48 1000A/60mV				48x48	BC48	1000A/60 mV									
M114ZR.	SBC48 1500A/60mV				48x48	BC48	1500A/60 mV									
M114ZT.	SBC48 2500A/60mV				48x48	BC48	2500A/60 mV									
M105Y9.	SEC72 FA 50/5 A				72x72	EC72 FA	50/5 A									
M105YA.	SEC72 FA 60/5 A				72x72	EC72 FA	60/5 A									
M105YB.	SEC72 FA 75/5 A				72x72	EC72 FA	75/5 A									
M105YC.	SEC72 FA 100/5 A				72x72	EC72 FA	100/5 A									
M105YD.	SEC72 FA 125/5 A				72x72	EC72 FA	125/5 A									
M105YE.	SEC72 FA 150/5 A				72x72	EC72 FA	150/5 A									
M105YF.	SEC72 FA 200/5 A				72x72	EC72 FA	200/5 A									
M105YG.	SEC72 FA 250/5 A				72x72	EC72 FA	250/5 A									
M105YH.	SEC72 FA 300/5 A				72x72	EC72 FA	300/5 A									
M105YJ.	SEC72 FA 400/5 A				72x72	EC72 FA	400/5 A									
M105YK.	SEC72 FA 500/5 A				72x72	EC72 FA	500/5 A									
M105YL.	SEC72 FA 600/5 A				72x72	EC72 FA	600/5 A									
M105YM.	SEC72 FA 750/5 A				72x72	EC72 FA	750/5 A									
M105YN.	SEC72 FA 800/5 A				72x72	EC72 FA	800/5 A									
M105YP.	SEC72 FA 1000/5 A				72x72	EC72 FA	1000/5 A									
M105YQ.	SEC72 FA 1200/5 A				72x72	EC72 FA	1200/5 A									
M105YR.	SEC72 FA 1500/5 A				72x72	EC72 FA	1500/5 A									
M105YS.	SEC72 FA 2000/5 A				72x72	EC72 FA	2000/5 A									
M105YT.	SEC72 FA 2500/5 A				72x72	EC72 FA	2500/5 A									
M105YU.	SEC72 FA 3000/5 A				72x72	EC72 FA	3000/5 A									
M105YV.	SEC72 FA 4000/5 A				72x72	EC72 FA	4000/5 A									
M105YW.	SEC72 FA 5000/5 A				72x72	EC72 FA	5000/5 A									
M118Y3.	SIP72 0...10V				72x72	BC72	0...10 V									
M118Y2.	SIP72 0...20mA				72x72	BC72	0...20 mA									
M118Y1.	SIP72 4...20mA				72x72	BC72	4...20 mA									
M114Y9.	SBC72 50A/60mV				72x72	BC72	50A/60 mV									
M104Y1.	SEC72 1000 /110V				72x72	EC72	1000 /110 V									
M114YA.	SBC72 60A/60mV				72x72	BC72	60A/60 mV									
M104Y2.	SEC72 3300 /110V				72x72	EC72	3300 /110 V									
M114YB.	SBC72 75A/60mV								72x72	BC72	75A/60 mV					
M104Y3.	SEC72 6600 /110V				72x72	EC72	6600 /110 V									
M114YC.	SBC72 100A/60mV				72x72	BC72	100A/60 mV									
M104Y4.	SEC72 13200 /110V				72x72	EC72	13200 /110 V									
M114YE.	SBC72 150A/60mV				72x72	BC72	150A/60 mV									
M122YC.	SMC72 100/5 A			100/5	72x72	MC72										
M104Y5.	SEC72 15000 /110V				72x72	EC72	15000 /110 V									
M114YF.	SBC72 200A/60mV				72x72	BC72	200A/60 mV									
M122YF.	SMC72 200/5 A			200/5	72x72	MC72										
M104Y6.	SEC72 20000 /110V				72x72	EC72	20000 /110 V									
M114YG.	SBC72 250A/60mV				72x72	BC72	250A/60 mV									



## CBC96 .../60mV

Code: M14830.

CODI	TIPUS	Escala	Precisió	Rang mesura (A)	Mòdul	Equip	Fons Escala	Rang mesurat (A)	Modules	Device	Full scale	Measurement Range (A)	Mesura	Freqüència (Hz)	Freqüència (Hz)	Descripció
M122YH.	SMC72 300/5 A			300/5	72X72	MC72										
M104Y7.	SEC72 22000 /110V				72x72	EC72	22000 /110 V									
M122YJ.	SMC72 400/5 A			400/5	72X72	MC72										
M102Y2.	SEC72 5/5 A			5/5	72x72	EC72	5/5 A									
M102Y3.	SEC72 10/5 A			10/5	72x72	EC72	10/5 A									
M104Y8.	SEC72 25000 /110V				72x72	EC72	25000 /110 V									
M122YK.	SMC72 500/5 A			500/5	72X72	MC72										
M102Y4.	SEC72 15/5 A			15/5	72x72	EC72	15/5 A									
M102Y5.	SEC72 20/5 A			20/5	72x72	EC72	20/5 A									
M122YL.	SMC72 600/5 A			600/5	72X72	MC72										
M102Y6.	SEC72 25/5 A			25/5	72x72	EC72	25/5 A									
M102Y7.	SEC72 30/5 A				72x72	EC72	30/5 A	30/5								
M122YM.	SMC72 750/5 A			750/5	72X72	MC72										
M102Y8.	SEC72 40/5 A			40/5	72x72	EC72	40/5 A									
M102Y9.	SEC72 50/5 A			50/5	72x72	EC72	50/5 A									
M122YN.	SMC72 800/5 A			800/5	72X72	MC72										
M102YA.	SEC72 60/5 A			60/5	72x72	EC72	60/5 A									
M102YB.	SEC72 75/5 A								72x72	EC72	75/5 A	75/5				
M122YP.	SMC72 1000/5 A			1000/5	72X72	MC72										
M102YC.	SEC72 100/5 A			100/5	72x72	EC72	100/5 A									
M102YD.	SEC72 125/5 A				72x72	EC72	125/5 A	125/5								
M122YR.	SMC72 1500/5 A			1500/5	72X72	MC72										
M102YE.	SEC72 150/5 A			150/5	72x72	EC72	150/5 A									
M102YF.	SEC72 200/5 A				72x72	EC72	200/5 A	200/5								
M122YS.	SMC72 2000/5 A			2000/5	72X72	MC72										
M102YG.	SEC72 250/5 A				72x72	EC72	250/5 A	250/5								
M102YH.	SEC72 300/5 A				72x72	EC72	300/5 A	300/5								
M102YJ.	SEC72 400/5 A			400/5	72x72	EC72	400/5 A									
M102YK.	SEC72 500/5 A				72x72	EC72	500/5 A	500/5								
M102YL.	SEC72 600/5 A			600/5	72x72	EC72	600/5 A									
M102YM.	SEC72 750/5 A				72x72	EC72	750/5 A	750/5								
M102YN.	SEC72 800/5 A			800/5	72x72	EC72	800/5 A									
M102YP.	SEC72 1000/5 A			1000/5	72x72	EC72	1000/5 A									
M102YQ.	SEC72 1200/5 A			1200/5	72x72	EC72	1200/5 A									
M102YR.	SEC72 1500/5 A			1500/5	72x72	EC72	1500/5 A									
M102YS.	SEC72 2000/5 A				72x72	EC72	2000/5 A	2000/5								
M102YT.	SEC72 2500/5 A				72x72	EC72	2500/5 A	2500/5								
M102YU.	SEC72 3000/5 A				72x72	EC72	3000/5 A	3000/5								
M102YV.	SEC72 4000/5 A				72x72	EC72	4000/5 A	4000/5								
M102YW.	SEC72 5000/5 A				72x72	EC72	5000/5 A	5000/5								
M114YH.	SBC72 300A/60mV				72x72	BC72	300A/60 mV									
M114YJ.	SBC72 400A/60mV				72x72	BC72	400A/60mV									
M114YL.	SBC72 600A/60mV				72x72	BC72	600A/60 mV									
M114YP.	SBC72 1000A/60mV				72x72	BC72	1000A/60 mV									
M114YR.	SBC72 1500A/60mV				72x72	BC72	1500A/60 mV									
M114YT.	SBC72 2500A/60mV				72x72	BC72	2500A/60 mV									
M105X9.	SEC96 FA 50/5 A				96x96	EC96 FA	50/5 A									
M105XA.	SEC96 FA 60/5 A				96x96	EC96 FA	60/5 A									
M105XB.	SEC96 FA 75/5 A				96x96	EC96 FA	75/5 A									
M105XC.	SEC96 FA 100/5 A				96x96	EC96 FA	100/5 A									
M105XD.	SEC96 FA 125/5 A				96x96	EC96 FA	125/5 A									
M105XE.	SEC96 FA 150/5 A				96x96	EC96 FA	150/5 A									
M105XF.	SEC96 FA 200/5 A				96x96	EC96 FA	200/5 A									
M105XG.	SEC96 FA 250/5 A				96x96	EC96 FA	250/5 A									
M105XH.	SEC96 FA 300/5 A				96x96	EC96 FA	300/5 A									
M105XJ.	SEC96 FA 400/5 A				96x96	EC96 FA	400/5 A									
M105XK.	SEC96 FA 500/5 A				96x96	EC96 FA	500/5 A									
M105XL.	SEC96 FA 600/5 A				96x96	EC96 FA	600/5 A									
M105XM.	SEC96 FA 750/5 A				96x96	EC96 FA	750/5 A									
M105XN.	SEC96 FA 800/5 A				96x96	EC96 FA	800/5 A									
M105XP.	SEC96 FA 1000/5 A				96x96	EC96 FA	1000/5 A									
M105XQ.	SEC96 FA 1200/5 A				96x96	EC96 FA	1200/5 A									
M105XR.	SEC96 FA 1500/5 A				96x96	EC96 FA	1500/5 A									
M105XS.	SEC96 FA 2000/5 A				96x96	EC96 FA	2000/5 A									

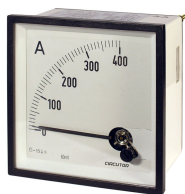


## CBC96 .../60mV

Code: M14830.

CODI	TIPUS	Escala	Precisió	Rang mesura (A)	Mòdul	Equip	Fons Escala	Rang mesurat (A)	Modules	Device	Full scale	Measurement Range (A)	Mesura	Freqüència (Hz)	Freqüència (Hz)	Descripció
M105XT.	SEC96 FA 2500 /5 A				96x96	EC96 FA	2500/5 A									
M105XU.	SEC96 FA 3000 /5 A				96x96	EC96 FA	3000/5 A									
M105XV.	SEC96 FA 4000 /5 A				96x96	EC96 FA	4000/5 A									
M105XW.	SEC96 FA 5000 /5 A				96x96	EC96 FA	5000/5 A									
M118X3.	SIP96 0...10V				96x96	BC96	0...10 V									
M118X2.	SIP96 0...20mA				96x96	BC96	0...20 mA									
M118X1.	SIP96 4...20mA				96x96	BC96	4...20 mA									
M114X9.	SBC96 50A/60mV				96x96	BC96	50A/60 mV									
M114XA.	SBC96 60A/60mV				96x96	BC96	60A/60 mV									
M104X1.	SEC96 1000 /110V				96x96	EC96	1000 /110 V									
M114XB.	SBC96 75A/60mV				96x96	BC96	75A/60 mV									
M104X2.	SEC96 3300 /110V				96x96	EC96	3300 /110 V									
M114XC.	SBC96 100A/60mV				96x96	BC96	100A/60 mV									
M104X3.	SEC96 6600 /110V				96x96	EC96	6600 /110 V									
M114XE.	SBC96 150A/60mV				96x96	BC96	150A/60 mV									
M104X4.	SEC96 13200 /110V				96x96	EC96	13200 /110 V									
M114XF.	SBC96 200A/60mV				96x96	BC96	200A/60 mV									
M104X5.	SEC96 15000 /110V				96x96	EC96	15000 /110 V									
M114XG.	SBC96 250A/60mV				96x96	BC96	250A/60 mV									
M104X6.	SEC96 20000 /110V				96x96	EC96	20000 /110 V									
M104X7.	SEC96 22000 /110V				96x96	EC96	22000 /110 V									
M122XC.	SMC96 100/5 A			100/5	96x96	MC96										
M104X8.	SEC96 25000 /110V				96x96	EC96	25000 /110 V									
M122XF.	SMC96 200/5 A			200/5	96x96	MC96										
M122XH.	SMC96 300/5 A			300/5	96x96	MC96										
M122XJ.	SMC96 400/5 A			400/5	96x96	MC96										
M122XK.	SMC96 500/5 A			500/5	96x96	MC96										
M122XL.	SMC96 600/5 A			600/5	96x96	MC96										
M122XM.	SMC96 750/5 A			750/5	96x96	MC96										
M102X2.	SEC96 5/5 A			5/5	96x96	EC96	5/5 A									
M122XN.	SMC96 800/5 A			800/5	96x96	MC96										
M102X3.	SEC96 10/5 A			10/5	96x96	EC96	10/5 A									
M102X4.	SEC96 15/5 A			15/5	96x96	EC96	15/5 A									
M122XP.	SMC96 1000/5 A			1000/5	96x96	MC96										
M102X5.	SEC96 20/5 A			20/5	96x96	EC96	20/5 A									
M102X6.	SEC96 25/5 A			25/5	96x96	EC96	25/5 A									
M122XR.	SMC96 1500/5 A			1500/5	96x96	MC96										
M102X7.	SEC96 30/5 A			30/5	96x96	EC96	30/5 A									
M102X8.	SEC96 40/5 A			40/5	96x96	EC96	40/5 A									
M122XS.	SMC96 2000/5 A			2000/5	96x96	MC96										
M102X9.	SEC96 50/5 A			50/5	96x96	EC96	50/5 A									
M102XA.	SEC96 60/5 A			60/5	96x96	EC96	60/5 A									
M102XB.	SEC96 75/5 A			75/5	96x96	EC96	75/5 A									
M102XC.	SEC96 100/5 A			100/5	96x96	EC96	100/5 A									
M102XD.	SEC96 125/5 A			125/5	96x96	EC96	125/5 A									
M102XE.	SEC96 150/5 A			150/5	96x96	EC96	150/5 A									
M102XF.	SEC96 200/5 A			200/5	96x96	EC96	200/5 A									
M102XG.	SEC96 250/5 A			250/5	96x96	EC96	250/5 A									
M102XH.	SEC96 300/5 A			300/5	96x96	EC96	300/5 A									
M102XJ.	SEC96 400/5 A			400/5	96x96	EC96	400/5 A									
M102XK.	SEC96 500/5 A			500/5	96x96	EC96	500/5 A									
M102XL.	SEC96 600/5 A			600/5	96x96	EC96	600/5 A									
M102XM.	SEC96 750/5 A			750/5	96x96	EC96	750/5 A									
M102XN.	SEC96 800/5 A			800/5	96x96	EC96	800/5 A									
M102XP.	SEC96 1000/5 A			1000/5	96x96	EC96	1000/5 A									
M102XQ.	SEC96 1200/5 A			1200/5	96x96	EC96	1200/5 A									
M114XH.	SBC96 300A/60mV				96x96	BC96	300A/60 mV									
M102XR.	SEC96 1500/5 A			1500/5	96x96	EC96	1500/5 A									
M102XS.	SEC96 2000/5 A			2000/5	96x96	EC96	2000/5 A									
M114XJ.	SBC96 400A/60mV				96x96	BC96	400A/60mV									
M102XT.	SEC96 2500/5 A			2500/5	96x96	EC96	2500/5 A									
M102XU.	SEC96 3000/5 A				96x96	EC96	3000/5 A	3000/5								





## CBC96 .../60mV

Code: M14830.

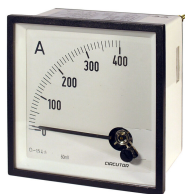
CODI	TIPUS	Escala	Precisió	Rang mesura (A)	Mòdul	Equip	Fons Escala	Rang mesurat (A)	Modules	Device	Full scale	Measurement Range (A)	Mesura	Freqüència (Hz)	Freqüència (Hz)	Descripció
M114XL	SBC96 600A/60mV				96x96	BC96	600A/60 mV									
M102XV	SEC96 4000/5 A				96x96	EC96	4000/5 A	4000/5								
M102XW	SEC96 5000/5 A			5000/5	96x96	EC96	5000/5 A									
M114XP	SBC96 1000A/60mV				96x96	BC96	1000A/60 mV									
M114XR	SBC96 1500A/60mV				96x96	BC96	1500A/60 mV									
M114XT	SBC96 2500A/60mV				96x96	BC96	2500A/60 mV									
M118U3	SIPMSC45 0...10V					BMSC45	0...10 V									
M118U2	SIPMSC45 0...20mA					BMSC45	0...20 mA									
M118U1	SIPMSC45 4...20mA					BMSC45	4...20 mA									
M114U9	SBMSC45 50A/60mV					BMSC45	50A/60 mV									
M114UA	SBMSC45 60A/60mV					BMSC45	60A/60 mV									
M114UB	SBMSC45 75A/60mV					BMSC45	75A/60 mV									
M104U1	SEMSC45 1000 /110V					EMSC45	1000 /110 V									
M114UC	SBMSC45 100A/60mV					BMSC45	100A/60 mV									
M104U2	SEMSC45 3300 /110V					EMSC45	3300 /110 V									
M114UE	SBMSC45 150A/60mV					BMSC45	150A/60 mV									
M104U3	SEMSC45 6600 /110V					EMSC45	6600 /110 V									
M114UF	SBMSC45 200A/60mV					BMSC45	200A/60 mV									
M104U4	SEMSC45 13200 /110V					EMSC45	13200 /110 V									
M114UG	SBMSC45 250A/60mV					BMSC45	250A/60 mV									
M104U5	SEMSC45 15000 /110V					EMSC45	15000 /110 V									
M104U6	SEMSC45 20000 /110V					EMSC45	20000 /110 V									
M104U7	SEMSC45 22000 /110V					EMSC45	22000 /110 V									
M104U8	SEMSC45 25000 /110V					EMSC45	25000 /110 V									
M102U9	SEMSC45 50/5 A			50/5		EMSC45	50/5 A									
M102UA	SEMSC45 60/5 A			60/5		EMSC45	60/5 A									
M102UB	SEMSC45 75/5 A			75/5		EMSC45	75/5 A									
M102UC	SEMSC45 100/5 A			100/5		EMSC45	100/5 A									
M102UD	SEMSC45 125/5 A			125/5		EMSC45	125/5 A									
M102UE	SEMSC45 150/5 A			150/5		EMSC45	150/5 A									
M114UH	SBMSC45 300A/60mV					BMSC45	300A/60 mV									
M102UF	SEMSC45 200/5 A			200/5		EMSC45	200/5 A									
M102UG	SEMSC45 250/5 A			250/5		EMSC45	250/5 A									
M114UJ	SBMSC45 400A/60mV					BMSC45	400A/60mV									
M102UH	SEMSC45 300/5 A			300/5		EMSC45	300/5 A									
M102UJ	SEMSC45 400/5 A			400/5		EMSC45	400/5 A									
M114UL	SBMSC45 600A/60mV					BMSC45	600A/60 mV									
M102UK	SEMSC45 500/5 A			500/5		EMSC45	500/5 A									
M102UL	SEMSC45 600/5 A			600/5		EMSC45	600/5 A									
M114UP	SBMSC45 1000A/60mV					BMSC45	1000A/60 mV									
M102UM	SEMSC45 750/5 A			750/5		EMSC45	750/5 A									
M102UN	SEMSC45 800/5 A			800/5		EMSC45	800/5 A									
M114UR	SBMSC45 1500A/60mV					BMSC45	1500A/60 mV									
M102UP	SEMSC45 1000/5 A			1000/5		EMSC45	1000/5 A									
M102UQ	SEMSC45 1200/5 A			1200/5		EMSC45	1200/5 A									
M114UT	SBMSC45 2500A/60mV					BMSC45	2500A/60 mV									
M102UR	SEMSC45 1500/5 A			1500/5		EMSC45	1500/5 A									
M102US	SEMSC45 2000/5 A			2000/5		EMSC45	2000/5 A									
M102UT	SEMSC45 2500/5 A			2500/5		EMSC45	2500/5 A									
M102UU	SEMSC45 3000/5 A			3000/5		EMSC45	3000/5 A									
M102UV	SEMSC45 4000/5 A			4000/5		EMSC45	4000/5 A									
M102UW	SEMSC45 5000/5 A			5000/5		EMSC45	5000/5 A									
M11764	BMSC45 15V	90°, P1	1,5			BMSC45										
M11765	BMSC45 30V	90°, P1	1,5			BMSC45										
M11766	BMSC45 60V	90°, P1	1,5			BMSC45										
M11767	BMSC45 100V	90°, P1	1,5			BMSC45										
M11768	BMSC45 150V	90°, P1	1,5			BMSC45										



## CBC96 .../60mV

Code: M14830.

CODI	TIPUS	Escala	Precisió	Rang mesura (A)	Mòdul	Equip	Fons Escala	Rang mesurat (A)	Modules	Device	Full scale	Measurement Range (A)	Mesura	Freqüència (Hz)	Freqüència (Hz)	Descripció
M1176F.	BMSC45 600V	90°, P1	1,5			BMSC45										
M11813.	BC48 0...10V	90°, P1	1,5		48x48	BC48	0...10 V									
M11812.	BC48 0...20mA	90°, P1	1,5		48x48	BC48	0...20 mA									
M11811.	BC48 4...20mA	90°, P1	1,5		48x48	BC48	4...20mA									
M11823.	BC72 0...10V	90°, P1	1,5		72x72	BC72	0...10 V									
M11822.	BC72 0...20mA	90°, P1	1,5		72x72	BC72	0...20 mA									
M11821.	BC72 4...20mA	90°, P1	1,5		72x72	BC72	4...20 mA									
M11833.	BC96 0...10V	90°, P1	1,5		96x96	BC96	0...10 V									
M11832.	BC96 0...20mA	90°, P1	1,5		96x96	BC96	0...20 mA									
M11831.	BC96 4...20mA	90°, P1	1,5		96x96	BC96	4...20 mA									
M11843.	BC144 0...10V	90°, P1	1,5		144x144		0...10 V									
M11842.	BC144 0...20mA	90°, P1	1,5		144x144		0...20 mA									
M11841.	BC144 4...20mA	90°, P1	1,5		144x144		4...20 mA									
M11863.	BMSC45 0...10V	90°, P1	1,5				0...10 V									
M11862.	BMSC45 0...20mA	90°, P1	1,5				0...20 mA									
M11861.	BMSC45 4...20mA	90°, P1	1,5				4...20mA									
M126YC.	SEMC72 100 /5A			100/5	72x72	EMC72										
M126YF.	SEMC72 200 /5A			200/5	72x72	EMC72										
M126YH.	SEMC72 300 /5A				72x72	EMC72		300/5								
M126YJ.	SEMC72 400 /5A			400/5	72x72	EMC72										
M126YK.	SEMC72 500 /5A			500/5	72x72	EMC72										
M126YL.	SEMC72 600 /5A								72x72	EMC72		600/5				
M126YM.	SEMC72 750 /5A								72x72	EMC72		750/5				
M126YN.	SEMC72 800 /5A			800/5	72x72	EMC72										
M126YP.	SEMC72 1000 /5A			1000/5	72x72	EMC72										
M126YR.	SEMC72 1500 /5A			1500/5	72x72	EMC72										
M126YS.	SEMC72 2000 /5A			2000/5	72x72	EMC72										
M126XC.	SEMC96 100 /5A			100/5	96x96	EMC96										
M126XF.	SEMC96 200 /5A			200/5	96x96	EMC96										
M126XH.	SEMC96 300 /5A			300/5	96x96	EMC96										
M126XJ.	SEMC96 400 /5A			400/5	96x96	EMC96										
M126XK.	SEMC96 500 /5A			500/5	96x96	EMC96										
M126XL.	SEMC96 600 /5A			600/5	96x96	EMC96										
M126XM.	SEMC96 750 /5A			750/5	96x96	EMC96										
M126XN.	SEMC96 800 /5A			800/5	96x96	EMC96										
M126XP.	SEMC96 1000 /5A			1000/5	96x96	EMC96										
M126XR.	SEMC96 1500 /5A			1500/5	96x96	EMC96										
M126XS.	SEMC96 2000 /5A			2000/5	96x96	EMC96										
M14810.	CEC96 .../5A	90°, P2	1,5		96x96		.../5 A									
M14821.	CEC96 150V	90°, P1	1,5		96x96											
M14822.	CEC96 250V	90°, P1	1,5		96x96											
M14823.	CEC96 300V	90°, P1	1,5		96x96											
M14824.	CEC96 400V	90°, P1	1,5		96x96											
M14825.	CEC96 500V	90°, P1	1,5		96x96											
M14826.	CEC96 600V	90°, P1	1,5		96x96											
M14820.	CEC96 .../110V	90°, P1	1,5		96x96		.../110 V									
M130J9.	SWM96 50/5A 20kW			50/5	96x96	WM96	20 kW									
M130J0.	SWM96 100/5A 40kW			100/5	96x96	WM96	40 kW									
M130J1.	SWM96 150/5A 60kW			150/5	96x96	WM96	60 kW									
M130J2.	SWM96 200/5A 80kW			200/5	96x96	WM96	80 kW									
M130J3.	SWM96 300/5A 120kW			300/5	96x96	WM96	120 kW									
M130J4.	SWM96 400/5A 160kW			400/5	96x96	WM96	160 kW									
M130J5.	SWM96 500/5A 200kW			500/5	96x96	WM96	200 kW									
M130J6.	SWM96 600/5A 240kW			600/5	96x96	WM96	240 kW									
M130J7.	SWM96 1000/5A 400kW			1000/5	96x96	WM96	400 kW									
M130J8.	SWM96 1500/5A 600kW			1500/5	96x96	WM96	600 kW									
M130J9.	SWM96 2000/5A 800kW			2000/5	96x96	WM96	800 kW									
M130J0.	SWM96 3000/5A 1,2MW			3000/5	96x96	WM96	1,2 MW									
M130J1.	SWM96 4000/5A 1,6MW			4000/5	96x96	WM96	1,6 MW									
M130J2.	SWM96 5000/5A 2MW			5000/5	96x96	WM96	2 MW									
M130K3.	SWT96E 50/5A 30kW			50/5	96x96	WT96E	30 kW									
M130K4.	SWT96E 75/5A 50kW			75/5	96x96	WT96E	50 kW									
M130K5.	SWT96E 100/5A 60kW			100/5	96x96	WT96E	60 kW									
M130K6.	SWT96E 150/5A 90kW			150/5	96x96	WT96E	90 kW									
M130K7.	SWT96E 200/5A 120kW			200/5	96x96	WT96E	120 kW									
M130K8.	SWT96E 300/5A 180kW			300/5	96x96	WT96E	180 kW									
M130K9.	SWT96E 400/5A 240kW			400/5	96x96	WT96E	240 kW									
M130K0.	SWT96E 500/5A 300kW			500/5	96x96	WT96E	300 kW									



## CBC96 .../60mV

Code: M14830.

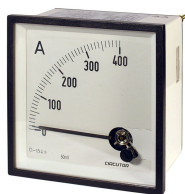
CODI	TIPUS	Escala	Precisió	Rang mesura (A)	Mòdul	Equip	Fons Escala	Rang mesurat (A)	Modules	Device	Full scale	Measurement Range (A)	Mesura	Freqüència (Hz)	Freqüència (Hz)	Descripció
M130KL	SWT96E 600/5A 360kW			600/5	96x96	WT96E	360 kW									
M130KP	SWT96E 1000/5A 600kW			1000/5	96x96	WT96E	600 kW									
M130KR	SWT96E 1500/5A 900kW			1500/5	96x96	WT96E	900 kW									
M130KS	SWT96E 2000/5A 1,2MW			2000/5	96x96	WT96E	1,2 MW									
M130KU	SWT96E 3000/5A 1,8MW			3000/5	96x96	WT96E	1,8 MW									
M130KV	SWT96E 4000/5A 2,4MW			4000/5	96x96	WT96E	2,4 MW									
M130KW	SWT96E 5000/5A 3MW			5000/5	96x96	WT96E	3 MW									
M130L9	SWT96AN 50/5A 30kW			50/5	96x96	WT96AN	30 kW									
M130LB	SWT96AN 75/5A 50kW			75/5	96x96	WT96AN	50 kW									
M130LC	SWT96AN 100/5A 60kW			100/5	96x96	WT96AN	60 kW									
M130LE	SWT96AN 150/5A 90kW			150/5	96x96	WT96AN	90 kW									
M130LF	SWT96AN 200/5A 120kW			200/5	96x96	WT96AN	120 kW									
M130LH	SWT96AN 300/5A 180kW			300/5	96x96	WT96AN	180 kW									
M130LJ	SWT96AN 400/5A 240kW			400/5	96x96	WT96AN	240 kW									
M130LK	SWT96AN 500/5A 300kW			500/5	96x96	WT96AN	300 kW									
M130LL	SWT96AN 600/5A 360kW			600/5	96x96	WT96AN	360 kW									
M130LP	SWT96AN 1000/5A 600kW			1000/5	96x96	WT96AN	600 kW									
M130LR	SWT96AN 1500/5A 900kW			1500/5	96x96	WT96AN	900 kW									
M130LS	SWT96AN 2000/5A 1,2MW			2000/5	96x96	WT96AN	1,2 MW									
M130LU	SWT96AN 3000/5A 1,8MW			3000/5	96x96	WT96AN	1,8 MW									
M130LV	SWT96AN 4000/5A 2,4MW			4000/5	96x96	WT96AN	2,4 MW									
M130LW	SWT96AN 5000/5A 3MW			5000/5	96x96	WT96AN	3 MW									
M12523	ZC72 0...10V	240° P1	1,5			72x72	0...10 V									
M12521	ZC72 4...20mA	240° P1	1,5			72x72	4...20 mA									
M12520	ZC72 .../60mV	240° P1	1,5			72x72	.../60 mV									
M12533	ZC96 0...10V	240° P1	1,5			96x96	0...10 V									
M12531	ZC96 4...20mA	240° P1	1,5			96x96	4...20 mA									
M12530	ZC96 .../60mV	240° P1	1,5			96x96	...60 mV									
M12543	ZC144 0...10V	240° P1	1,5			144x144	0...10 V									
M12541	ZC144 4...20mA	240° P1	1,5			144x144	4...20 mA									
M12540	ZC144 .../60mV	240° P1	1,5			144x144	.../60 mV									
M12211	MC48 .../5 A	90°, P1, 2	3	.../5 A		48x48										
M12221	MC72 .../5A	90°, P1, 2	3	.../5 A		72x72										
M15521	MC72 .../5A 120%	90°, P1, 2	3	.../5 A		72x72										
M12231	MC96 .../5 A	90°, P1, 2	3	.../5 A		96x96										
M15531	MC96 .../5A 120%	90°, P1, 2	3	.../5 A		96x96										
M12241	MC144 .../5A	90°, P1, 2	3	.../5 A		144x144										
M12622	EMC72 .../5A	Doble escala 90°, P1,2, ferro mòbil P2	Bimetàl·lic	.../5 A		72x72										
M12632	EMC96 .../5A	Doble escala 90°, P1,2, ferro mòbil P2	Bimetàl·lic	.../5 A		96x96										
M12642	EMC144 .../5A	Doble escala 90°, P1,2, ferro mòbil P2	Bimetàl·lic	.../5 A		144x144										
<b>HC72</b>																
M12721	HC72 45-55Hz 230V	90°	0,5			72x72							45...55 Hz	45...55		
<b>HC96</b>																
M12731	HC96 45-55Hz 230V	90°	0,5			96x96							45...55 Hz	45...55		
<b>HC144</b>																
M12741	HC144 45-55Hz 230V	90°	0,5			144x144							45...55 Hz	45...55		
<b>HMSC45</b>																
M12761	HMSC45 45-55Hz 230V	90°	0,5										45...55 Hz	45...55		
M1291100A0000	HLC48 48,5-51,5Hz 7L		0,5			48x48							48,5...51,5 Hz	48,5...51,5, 7 làmines		
M1291100B0000	HLC48 58,5-61,5Hz 7L		0,5			48x48							58,5...61,5 Hz	58,5...61,5, 7 làmines		
M1292100C0000	HLC72 47-53Hz 13L		0,5			72x72							47...53 Hz	47...53, 13 làmines		
M1292100I00000	HLC72 57-63Hz 13L		0,5			72x72							57...63 Hz	53...63, 13 làmines		
M1293100C00000	HLC96 47-53Hz 13L		0,5			96x96							47...53 Hz	47...53, 13 làmines		
M1293100I00000	HLC96 57-63Hz 13L		0,5			96x96							57...63 Hz	57...63, 13 làmines		
M1293100B00000	HLC96 46-54Hz 17L		0,5			96x96							46...54 Hz	46...54, 17 làmines		
M1293100G00000	HLC96 56-64Hz 17L		0,5			96x96							56...64 Hz	57...63, 17 làmines		



## CBC96 .../60mV

Code: M14830.

CODI	TIPUS	Escala	Precisió	Rang mesura (A)	Mòdul	Equip	Fons Escala	Rang mesurat (A)	Modules	Device	Full scale	Measurement Range (A)	Mesura	Freqüència (Hz)	Freqüència (Hz)	Descripció
M129410060000	HLC144 45-55Hz 21L		0,5		144x144								45...55 Hz	45...55, 21 làmines		
M129410070000	HLC144 55-65Hz 21L		0,5		144x144								55...65 Hz	55...65, 21 làmines		
<b>Single-phase</b>																
M13031.	WMC96 400V .../5A	90° P1	1,5		96x96	WMC96							400 Vf-f, .../5 A			
M13041.	WMC144 400V .../5A	90° P1	1,5		96x96	WMC144							400 Vf-f, .../5 A			
<b>Balanced three-phase</b>																
M13032.	WTC96E 400V .../5A	90° P1	1,5		96x96	WTC96							400 Vf-f, .../5 A			
M13042.	WTC144E 400V .../5A	90° P1	1,5		144x144	WTC144E							400 Vf-f, .../5 A			
<b>Three-phase 3 wire (ARON)</b>																
M13034.	WTC96A 110V .../5A	90° P1	1,5		96x96	WTC96A							110 Vf-f, .../5A			
M13044.	WTC144A 110V .../5A	90° P1	1,5		144x144	WTC144A							110 Vf-f, .../5A			
<b>Three-phase 4 wire</b>																
M13033.	WTC96AN 400V .../5A	90° P1	1,5		96x96	WTC96AN							400 Vf-f, .../5 A			
M13043.	WTC144AN 400V .../5A	90° P1	1,5		144x144	WTC144AN							400 Vf-f, .../5 A			
<b>Single-phase</b>																
M13431.	FEMC96 100/ $\sqrt{3}$ V	90° P1	1,5		96x96											
M13432.	FEMC96 110/ $\sqrt{3}$ V	90° P1	1,5		96x96											
M13433.	FEMC96 100V	90° P1	1,5		96x96											
M13434.	FEMC96 110V	90° P1	1,5		96x96											
M13435.	FEMC96 230V	90° P1	1,5		96x96											
M13436.	FEMC96 400V	90° P1	1,5		96x96											
M13437.	FEMC96 440V	90° P1	1,5		96x96											
M13438.	FEMC96 500V	90° P1	1,5		96x96											
M13441.	FEMC144 100/ $\sqrt{3}$ V	90° P1	1,5		144x144											
M13442.	FEMC144 110/ $\sqrt{3}$ V	90° P1	1,5		144x144											
M13443.	FEMC144 100V	90° P1	1,5		144x144											
M13444.	FEMC144 110V	90° P1	1,5		144x144											
M13445.	FEMC144 230V	90° P1	1,5		144x144											
M13446.	FEMC144 400V	90° P1	1,5		144x144											
M13447.	FEMC144 440V	90° P1	1,5		144x144											
M13448.	FEMC144 500V	90° P1	1,5		144x144											
<b>Balanced three-phase</b>																
M1343C.	FETC96 100V	90° P1	1,5		96x96											
M1343D.	FETC96 110V	90° P1	1,5		96x96											
M1343E.	FETC96 230V	90° P1	1,5		96x96											
M1343F.	FETC96 400V	90° P1	1,5		96x96											
M1343G.	FETC96 440V	90° P1	1,5		96x96											
M1343H.	FETC96 500V	90° P1	1,5		96x96											
M1344C.	FETC144 100V	90° P1	1,5		144x144											
M1344D.	FETC144 110V	90° P1	1,5		144x144											
M1344E.	FETC144 230V	90° P1	1,5		144x144											
M1344F.	FETC144 400V	90° P1	1,5		144x144											
M1344G.	FETC144 440V	90° P1	1,5		144x144											
M1344H.	FETC144 500V	90° P1	1,5		144x144											
<b>Single-phase</b>																
M14721.	PGR96M .../5A	90°, P2	1,5	.../5 A	96x96	CW-M							110/ $\sqrt{3}$ ... 500 V			
<b>Balanced three-phase</b>																
M14722.	PGR96E .../5A	90°, P2	1,5	.../5 A	96x96	CW-TE							110 ... 500 V			
<b>Three-phase 3 wire (ARON)</b>																
M14724.	PGR96A .../5A	90°, P2	1,5	.../5 A	96x96	CW-TA							110 ... 500 V			
<b>Three-phase 4 wire</b>																
M14723.	PGR96AN .../5A	90°, P2	1,5	.../5 A	96x96	CW-TAN							110 ... 500 V			
M13831.	2EC96 2x.../100V	90°	1,5		96x96	2EC96										
M13832.	2EC96 2x.../110V	90°	1,5		96x96	2EC96										
M13833.	2EC96 2x220V	90°	1,5		96x96	2EC96										
M13834.	2EC96 2x380V	90°	1,5		96x96	2EC96										
M13835.	2EC96 2x440V	90°	1,5		96x96	2EC96										
M13841.	2EC144 2x.../100V	90°	1,5		144x144	2EC144										
M13842.	2EC144 2x.../110V	90°	1,5		144x144	2EC144										
M13843.	2EC144 2x220V	90°	1,5		144x144	2EC144										



## CBC96 .../60mV

Code: M14830.

CODI	TIPUS	Escala	Precisió	Rang mesura (A)	Mòduls	Equip	Fons Escala	Rang mesurat (A)	Modules	Device	Full scale	Measurement Range (A)	Mesura	Freqüència (Hz)	Freqüència (Hz)	Descripció
M13844.	2EC144 2x380V	90°	1,5		144x144	2EC144										
M13845.	2EC144 2x440V	90°	1,5		144x144	2EC144										
<b>Pointer type, 230 V</b>																
M12732.	2HC96 45-55Hz	90°	0,5		96x96								45...55 Hz	45...55		
M12742.	2HC144 45-55Hz	90°	0,5		144x144								45...55 Hz	45...55		
M1293200C0000	2HLC96 47-53Hz		0,5		96x96								47...53 Hz	47...53, 13 làmines		
M129320010000	2HLC96 57-63Hz		0,5		96x96								57...63 Hz	57...63, 13 làmines		
M129320080000	2HLC96 46-54Hz		0,5		96x96								46...54 Hz	46...54, 17 làmines		
M129320090000	2HLC96 56-64Hz		0,5		96x96								56...64 Hz	56...64, 17 làmines		
M129420060000	2HLC144 45-55Hz		0,5		144x144								45...55 Hz	45...55, 21 làmines		
M129420070000	2HLC144 55-65Hz		0,5		144x144								55...65 Hz	55...65, 21 làmines		
<b>Single-phase</b>																
M14431.	SMC96 110V		1,5		96x96	SMC96										
M14432.	SMC96 230V		1,5		96x96	SMC96										
M14433.	SMC96 400V		1,5		96x96	SMC96										
M14434.	SMC96 500V		1,5		96x96	SMC96										
M14441.	SMC144 110V		1,5		144x144	SMC144										
M14442.	SMC144 230V		1,5		144x144	SMC144										
M14443.	SMC144 400V		1,5		144x144	SMC144										
M14444.	SMC144 500V		1,5		144x144	SMC144										
<b>Three-phase</b>																
M14435.	STC96 110V		1,5		96x96	STC96										
M14436.	STC96 230V		1,5		96x96	STC96										
M14437.	STC96 400V		1,5		96x96	STC96										
M14438.	STC96 500V		1,5		96x96	STC96										
M14445.	STC144 110V		1,5		144x144	STC144										
M14446.	STC144 230V		1,5		144x144	STC144										
M14447.	STC144 400V		1,5		144x144	STC144										
M14448.	STC144 500V		1,5		144x144	STC144										
<b>Power Supply 400 V</b>																
M14624.	SYNCHROMAX 30...150V													35...80		
M14625.	SYNCHROMAX 110...600V														35...80	
M14634.	SYNCHROMAX-PID 30...150V														35...80	
M14635.	SYNCHROMAX-PID 110...600V													35...80		
M13726.	UC72 100...150V				72x72	UC72										
M13721.	UC72 150...500V				72x72	UC72										
M13736.	UC96 100...150V				96x96	UC96										
M13731.	UC96 150...500V				96x96	UC96										
M13754.	CUC96 230V				96x96	CUC96										
M13755.	CUC96 400V				96x96	CUC96										
M14911.	CH48				48x48									50		
M14921.	CH72				72x72									50		
M14931.	CH96				96x96									50		
M14951.	CH45													50		
M15051.	MEG-1000	90°	1,5										0 ... 500 kΩ   0,5 ... 5 MΩ		50...60	
M12252.	Joint IP54 C48															Junta IP 54, 48 x 48
M12253.	Joint IP54 C72															Junta IP 54, 72 x 72
M12254.	Joint IP54 C96				96x96											
M12255.	Joint IP54 C144				144x144											
M19941.	FIP-C48															Protecció IP 65, 48 x 48
M19942.	FIP-C72															Protecció IP 65, 72 x 72
M19943.	FIP-C96				96x96											
M19944.	FIP-C144				144x144											
M19921.	Tapa cobrebornas 48x48															Tapa cobreix-borns (IP 20) 48x48
M19922.	Tapa cobrebornas 72x72															Tapa cobreix-borns (IP 20) 72x72
M19923.	Tapa cobrebornas 96x96															Tapa cobreix-borns (IP 20) 96x96



## CBC96 .../60mV

Code: M14830.

### Dimensions



### Conexions

