

# MDC 20

Maximum Demand Control



**Manage your loads intelligently**

## Intelligent

The **MDC-20** guarantees the maximum level of contracted power, avoiding maximum demand excess due to simultaneous load connections



# Management



# Management

- » Local control of 6 loads
- » Decentralised load control
- » **Expandable** load system
- » Manual or automatic system management
- » **Connection / disconnection of the loads according to priority**



Management

Programmable



# Management

## Programmable

- » Creation of loads and load groups with different priorities
- » Configuration of time discriminators
- » Maximum Demand according a calendar or conditions
- » Automatic load disconnection schedule





Management

Programmable

Communicable



Management

Programmable

**Communicable**

» RS-485 Port

» Ethernet connection

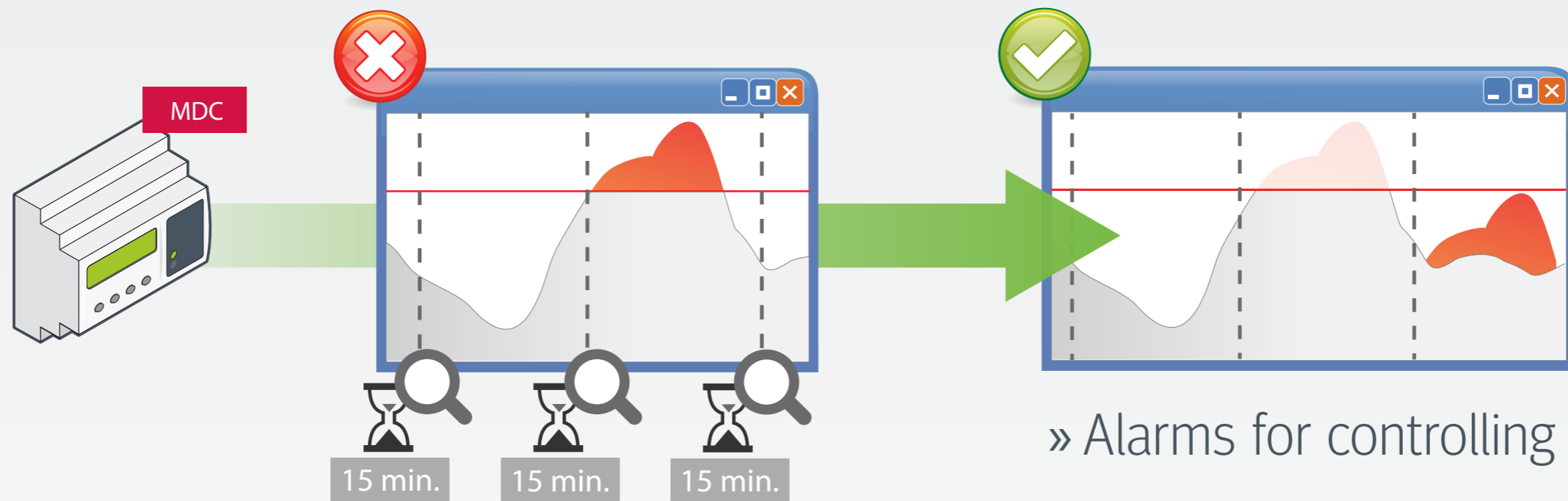
» Compatible with any XML communication master (server).

» Send e-mails

\* OPC / SQL communication accessory available

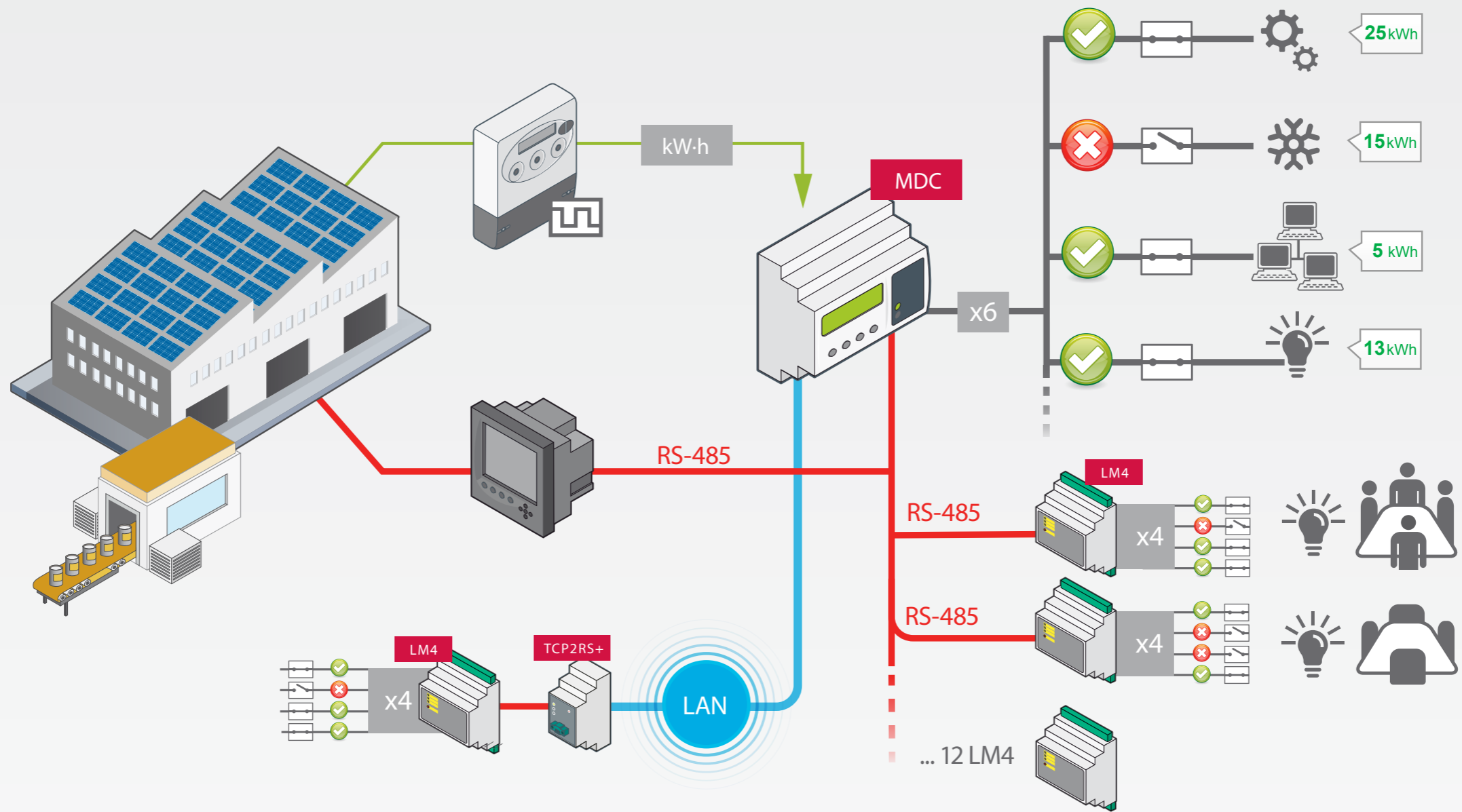


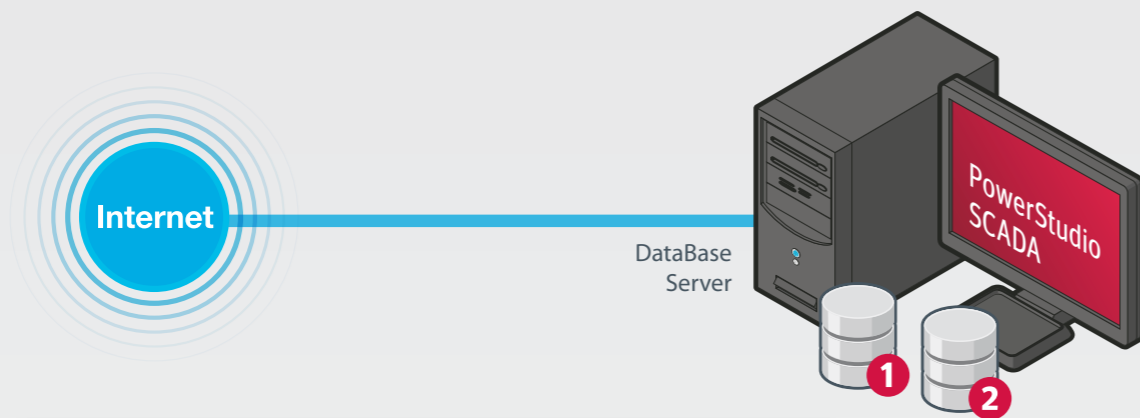
With **MDC-20** you can avoid penalties in your electric bill due to maximum demand excess by disconnecting non-priority loads.



» Alarms for controlling faults or excess power

# Expandable with relay output (LM4I/40-M) units for managing an installation's remote loads



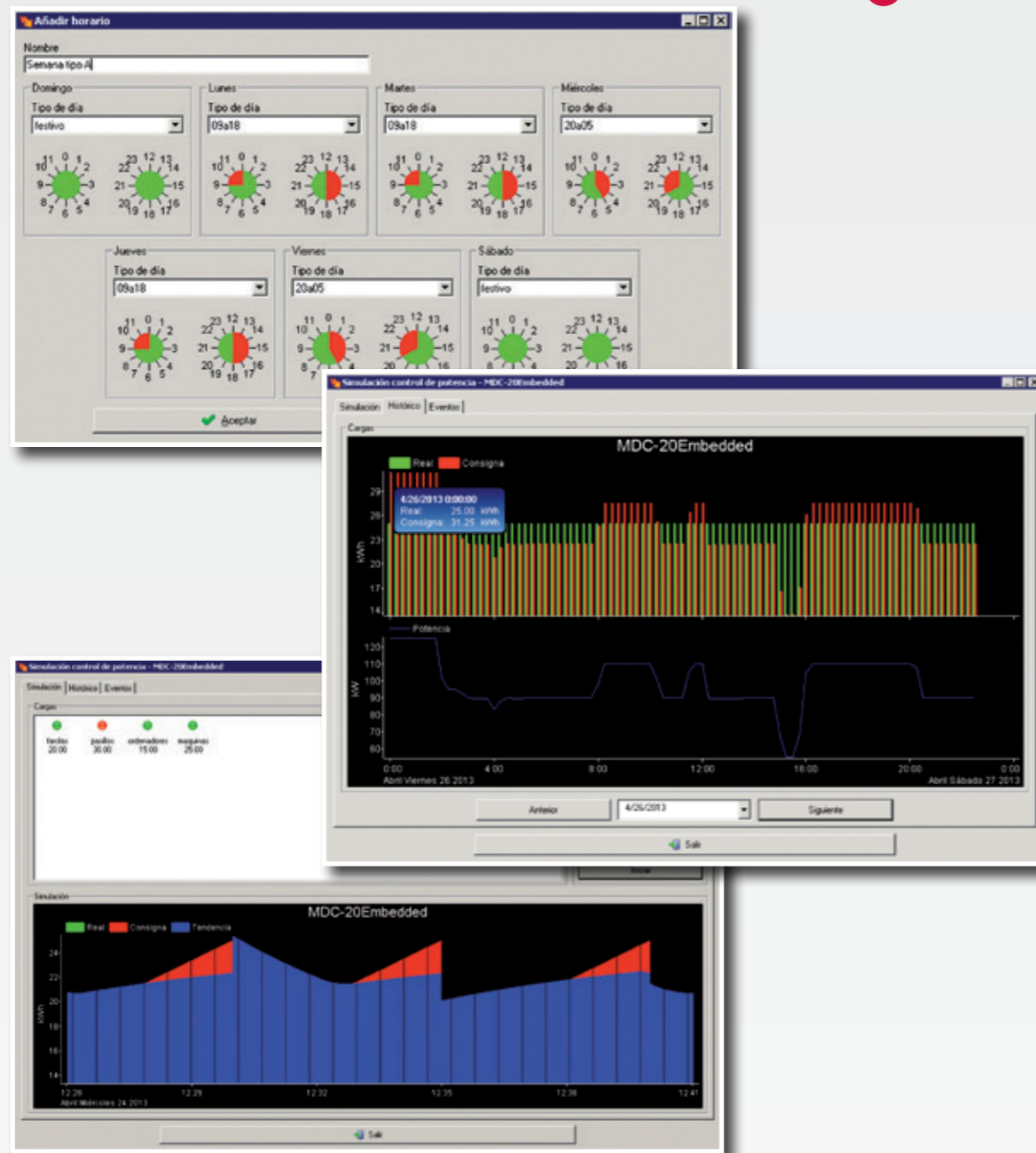


» Software included

» Real time visualization of the system operation

» Programming different powers according to the schedule configuration

» Manual and remote load connection / disconnection





# Main benefits

- Avoid penalties for exceeding contracted power
- Non-priority load management
- Manual load connection / disconnection
- Programmed load connection / disconnection
- Optional sync pulse input for synchronising with the utility energy meter
- Instantaneous energy value reading
- 6 relay outputs for actuating on local loads
- Expandable with LM4I/40-M (up to 48 loads)
- Ethernet 10 / 100 Base TX communications
- Simulation mode

# Manufacturing processes

**MDC-20** adjusts to the number of loads in any installation.

Possibility of creating load groups with the same priority and FIFO or LIFO connection/disconnection sequence.

# Tertiary Sector

Automatic load disconnection during time slots when they should not be connected.

Sync pulse input for accurately adapting to the start of the utility company's meter calculation.

Reading of the instantaneous energy value by means of impulses or communications (Modbus/RTU).







*Energy efficiency technology*



Tel. (+34) 93 745 29 00

Fax: (+34) 93 745 29 14

[central@circutor.com](mailto:central@circutor.com)

Vial Sant Jordi, s/n 08232 Viladecavalls (Barcelona) Spain



[@circutor](https://twitter.com/circutor)



[youtube.com/circutoroficial](https://youtube.com/circutoroficial)



[circutor](https://in.circutor)